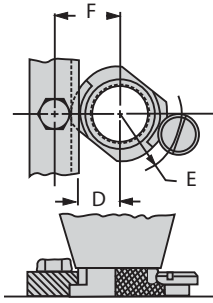
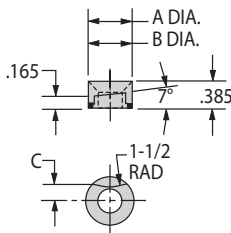


AIR FEED BUSHINGS

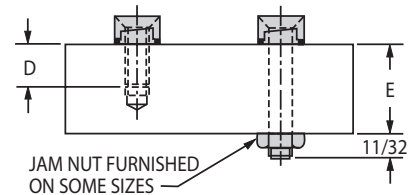
MOUNTING DIMENSIONS FOR LOCKSCREWS AND LOCK STRIPS



DIMENSION	21000 SERIES	22000 SERIES	23000 SERIES	24000 SERIES	25000 SERIES
D	.312	.609	.734	.859	—
E	.625	.922	1.047	1.172	1.562
F	.687	.984	1.109	1.234	—



TAPER-LOK AIR-FEED LOCKSCREWS

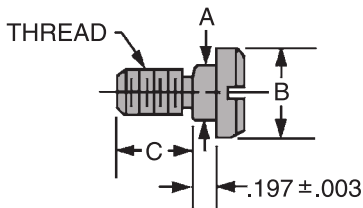


JAM NUT FURNISHED ON SOME SIZES

Angular locking surface mates perfectly with air-feed collars. Use instead of standard lock screws for greater strength . . . eliminates worn, bent, or broken lock screws caused by point contact. Serrations at bottom bite into the fixture plate to positively prevent rotation under heavy torque loads. Alloy steel mounting screws furnished. **Patent no. 3,336,822.**

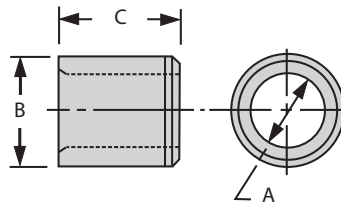
PART NO.	MOUNTING SCREW DIA.	MOUNTING SCREW	A DIA	B DIA	C	D	E	REPLACES STANDARD LOCKSCREW
CL-9-AFL	5/16	Not Furnished	5/8	19/32	3/16	—	—	—
CL-11-AFL		5/16-18x1.00				19/32	—	16531 & 16532
CL-13-AFL		5/16-18x1.50 w/Jam Nut				1-3/32	3/4	—
CL-14-AFL		5/16-18x2.00 w/Jam Nut				1-19/32	1-1/4	—
CL-10-AFL	3/8	Not Furnished	3/4	23/32	7/32	—	—	—
CL-12-AFL		3/8-16x1.00				19/32	—	16530

LOCKSCREWS



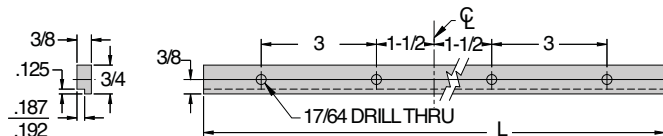
PART NO. (PACK OF 5)	A DIA	B DIA	C	B THREAD
16531-PACKOF5	3/8	5/8	5/16	5/16-18
16532-PACKOF5			7/16	
16530-PACKOF5	7/16	3/4	5/8	3/8-16

LINERS



PART NO.	A ID	B OD	C LENGTH
19936	3/8	5/8	1
19937	7/16	3/4	1
19938	1/2		
19939	9/16	7/8	1
19940	5/8		1-3/4
19947			1
19941	3/4	1	1-3/8
19942			1-3/8
19949	13/16	1-3/8	1-3/4
19943			1-3/8
19944	7/8	1-3/8	1-3/4
19950	1		1-3/8
19945	1	1-3/4	1-3/4
19951			1-3/4
19946	1-1/8	1-3/4	1-3/4
19952	1-1/4		
19953	1-3/8	2-1/4	2-1/2
19954			2-1/2
19955	1-1/2	2-1/4	2-1/2
19956	1-3/4		

LOCK STRIPS



PART NO.	L OVERALL LENGTH	NO. OF HOLES
LSM-12	12	4
LSM-24	24	8
LSM-36	36	12