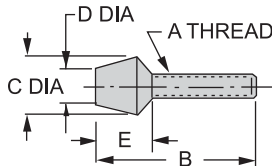


FLAT-CUSHION SPINDLES



This is the standard spindle supplied with most clamps. Molded neoprene tip provides medium clamping force with some compensation for part-size variation. Also provides scratch free clamping. Neoprene cushion has a durometer hardness of 70 shore A, and an operating temperature range of -40°F to 220°F. Spindle is fully threaded for maximum adjustment range. Assembly includes two jam nuts.



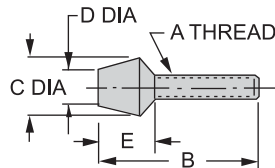
STEEL (INCH)

PART NO.	A THREAD	B	C DIA	D DIA	E
CL-316112-FC-PACKOF2	#10-32	1-3/8	9/16	.44	.40
CL-141112-FC-PACKOF2	1/4-20	1-5/8	5/8	.40	.60
CL-14200-FC-PACKOF2		2-1/8			
CL-518208-FC-PACKOF2	5/16-18	2-1/4	3/4	.48	.72
CL-516212-FC-PACKOF2		3			
CL-38212-FC-PACKOF2	3/8-16	2-9/16	7/8	.56	.84
CL-38314-FC-PACKOF2		3-9/16			

FLAT-CUSHION SPINDLES, QUICK ADJUSTING



Same as the Flat-Cushion Spindles above, except with two knurled nuts, instead of hex jam nuts, for convenient hand tightening. Use for quick spindle adjustment in applications where high-torque tightening with a wrench is not required.



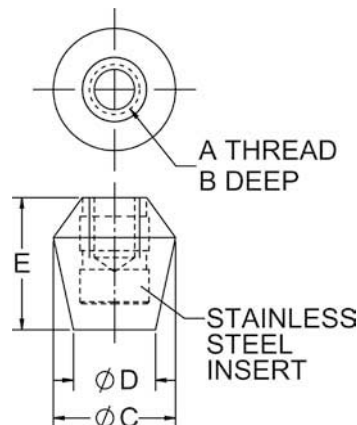
STEEL (INCH)

PART NO.	A THREAD	B	C DIA	D DIA	E
CL-316112-FCQA	#10-32	1-3/8	9/16	.44	.40
CL-141112-FCQA	1/4-20	1-5/8	5/8	.40	.60
CL-14200-FCQA		2-1/8			
CL-518208-FCQA	5/16-18	2-1/4	3/4	.48	.72
CL-516212-FCQA		3			
CL-38212-FCQA	3/8-16	2-9/16	7/8	.56	.84
CL-38314-FCQA		3-9/16			

POLYURETHANE FLAT CUSHIONS



Polyurethane cushions are tougher and slightly harder than standard neoprene cushions. Ideal when greater clamping force is required while still providing scratchfree clamping and some compensation for part-size variation. Molded-in stainless steel insert provides superior thread strength. Ideal for making custom-length Flat Cushion Spindles by inserting a threaded stud. Polyurethane cushion has a hardness 85 Shore A, operating temperature range -90°F to 200°F.



STAINLESS (INCH)

PART NO.	A	B	C DIA	D DIA	E
CL-1032-FCP-PACKOF2	#10-32	.19	.63	.41	.63
CL-1420-FCP	1/4-20	.30			
CL-51618-FCP	5/16-18	.33	.75	.50	.75
CL-3816-FCP	3/8-16	.38	.81	.63	.88

STAINLESS (METRIC)

PART NO.	A	B	C DIA	D DIA	E
CLM-5-FCP-PACKOF2	M5	.19	.63	.47	.63
CLM-6-FCP	M6	.24			
CLM-8-FCP	M8	.30	.75	.50	.75
CLM-10-FCP	M10	.35	.81	.63	.88