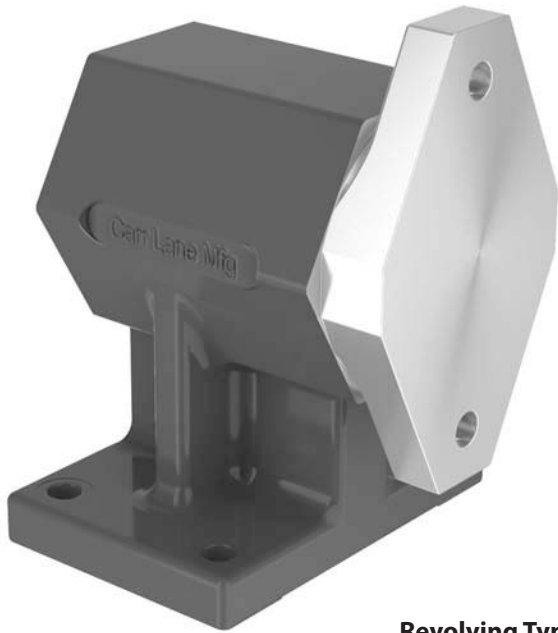


# TRUNNIONS

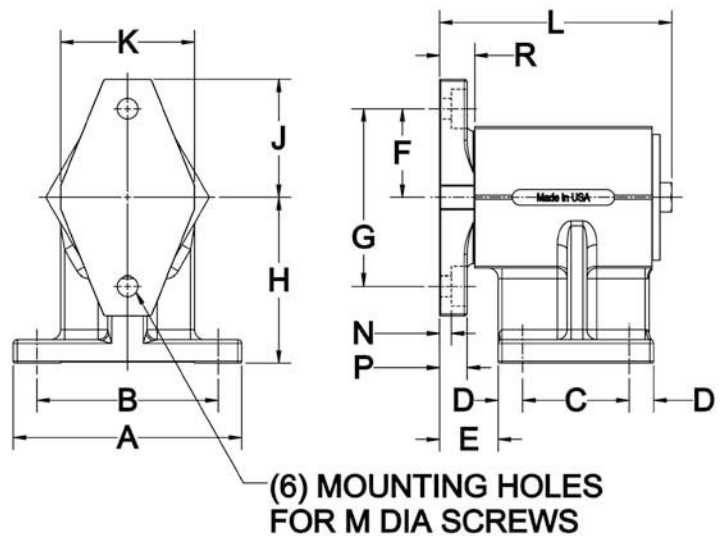
ARM: ALUMINUM ALLOY

BODY: ALUMINUM ALLOY WITH BRONZE BEARING, GREEN POWDER-COATED EXTERIOR



**Revolving Type**

Trunnions are rugged, precision bearing mounts for revolving fixtures. Ideal for assembly and welding fixtures, and any other applications where the part must be accessible from all sides. Usually used in pairs, one locking Trunnion and one revolving Trunnion, to distribute the load between them without bending forces. The locking version has a friction-cone mechanism that stops the rotor at any angle by tightening the knob (loosen knob again to unlock). The revolving version, shown here, has a free-rotating bearing at both ends of the rotor shaft, with no locking mechanism. Choice of two sizes. **Patent no. 3,129,937.** Made in USA.



## REVOLVING TYPE

PART NO.	LOAD CAPACITY (18" from face)	A	B	C	D	E	F	G	H	J	K	L	M	N	P	R
CL-100-TR	1800 lbs	5	4	2-3/8	1/2	1-3/8	2	4	4	2-5/8	3-1/4	5-7/16	3/8 or M10	.33	5/8	13/16
CL-200-TR	2500 lbs	7-1/4	5-3/4	3-3/8	3/4	1-7/8	2-13/16	5-5/8	5-1/4	3-3/4	4-1/4	7-5/8	5/8 or M16	.38	7/8	1-1/8