

ADJUSTABLE ANGLES

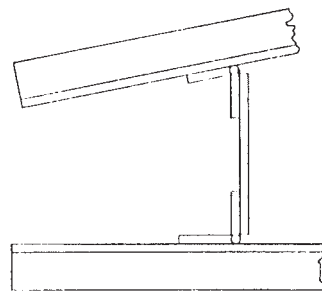
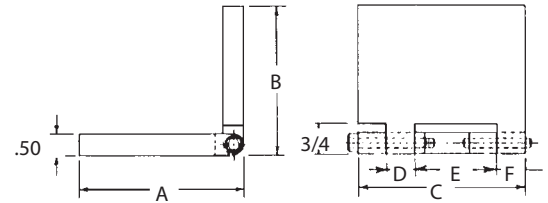
1018 STEEL, BLACK OXIDE FINISH



Plain

Precision angle with accurately machined sides and a close-tolerance hinge. Available either plain, with tabs for welding on a gusset, or with a removable pivot pin.

Patent no. 3,039,570.



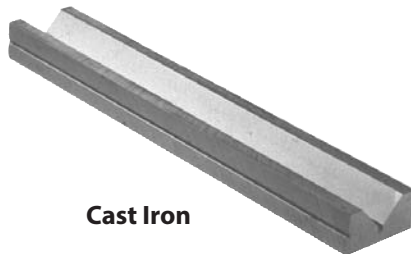
PLAIN

PART NO.	A	B	C	D	E	F
CL-AA-4P	3	3	3	5/8	1-1/8	5/8
CL-AA-1P	4	4	4	3/4	1-3/4	3/4

CAST SECTIONS

CAST IRON: ASTM CLASS 40, TENSILE STRENGTH 40,000 TO 45,000 PSI

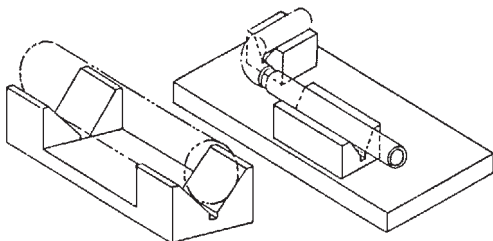
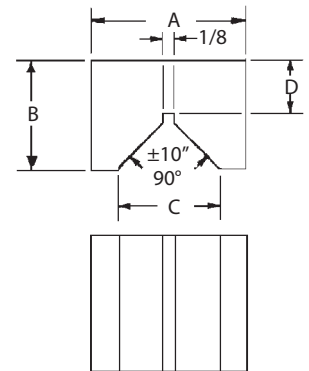
ALUMINUM: 352, TENSILE STRENGTH 30,000 PSI



Cast Iron

Fast, economical way to make special fixture components. All surfaces are machined square and parallel within ± 0.005 inches per foot, except ends. Internal faces on square and rectangular sections are unfinished. All dimensions $\pm 1/32$ (except length, which is $-1/16$ to $+1/8$).

Cast sections are available in full lengths (usually 25") or 6" lengths. Custom lengths are available as specials.



V SECTIONS — CAST IRON

PART NO. FULL LENGTH	A	B	C	D	FULL LENGTH
CL-1-CSV-18.00	2	1	1-1/4	5/16	18
CL-2-CSV-18.00	3	1-3/4	2	11/16	
CL-3-CSV-18.00	4	2-1/2	3	7/8	