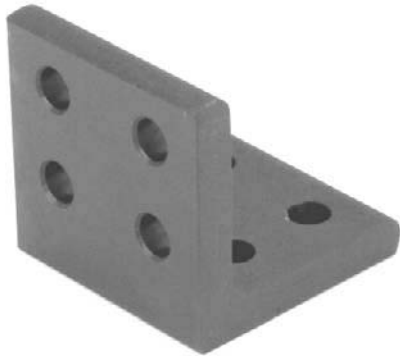


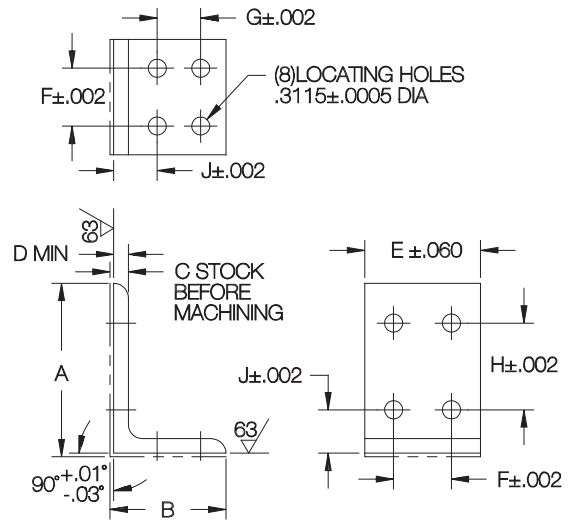
ANGLE BRACKETS WITH LOCATING HOLES

ANGLE BRACKET: ASTM A36 STEEL, BLACK OXIDE FINISH
LOCATING BOLT: STEEL



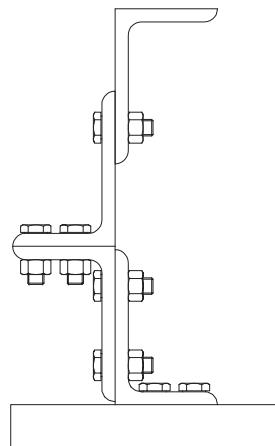
Angle Bracket

Extremely accurate angle brackets with precision locating holes. These angles are ideal for bolting together like an erector set to create large-scale tooling. The 90° angle and (8) locating holes are machined to close tolerances to maintain good accuracy in built-up tooling. Use with the precision locating bolts shown below.

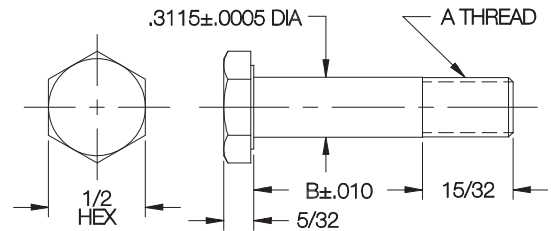


ANGLE BRACKETS

PART NO. STEEL	A	B	C	D	E	F	G	H	J	
CL-1531-ABK	2	2	3/8	1/4	2	1.000	.750	.750	.750	
CL-1532-ABK	3	2						1.500		
CL-1535-ABK	2	2	1/2	3/8	4	3.000	.750	1.125		
CL-1539-ABK	3	3			3	2.000	1.250		1.250	
CL-1533-ABK	4	4			4	2.000	2.000		2.000	1.000
CL-15310-ABK	4	4			4	3.000	2.000		2.000	1.125
CL-1534-ABK	6	4					1.500	3.500	1.500	



These high-precision angles can be bolted together to build economical large-scale tooling. Ideal for assembly and welding fixtures.



ANGLE BRACKET LOCATING BOLTS AND HEX NUTS

PART NO. LOCATING BOLT	PART NO. HEX NUT	A	B
CL-506-ABLB	CL-5-FHN	5/16-24	.375
CL-508-ABLB			.500
CL-510-ABLB			.625
CL-512-ABLB			.750
CL-516-ABLB			1.000



Angle Bracket Locating Bolt



Hex Nut

Precision bolts for fastening angle brackets to each other, and to other tooling. Ground locating diameter provides a slight press fit when angles are bolted together. Steel.