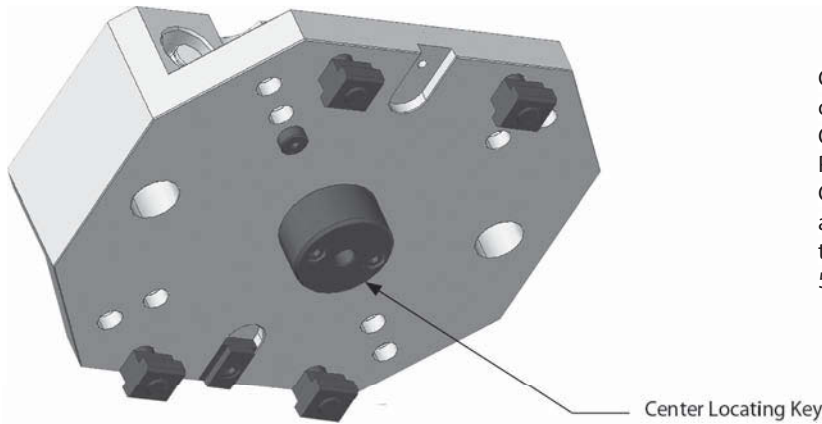
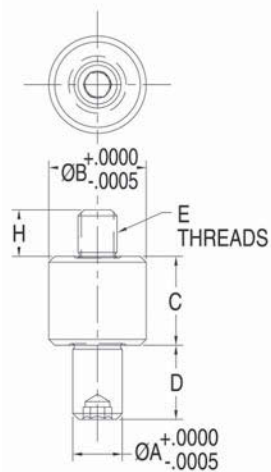


# CL5® QUICK-CHANGE 5-AXIS WORKHOLDING

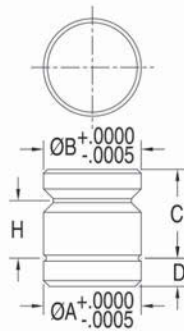
## CENTER LOCATING KEYS



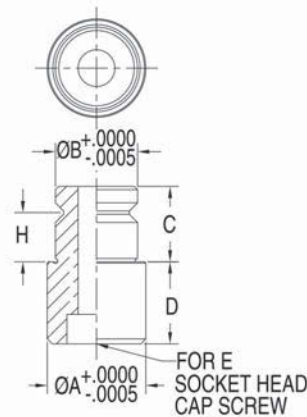
Center Locating Keys are used to precisely center a fixture on a rotary table. They can be used for mounting Quintus Quick-Change Risers, Riser Blocks, and Round Tooling Plates, which all have a standard 25mm center hole. All Center Locating Keys have a 25mm upper diameter and are available with a wide range of bottom diameters to fit the rotary table's center hole. 1144 steel, heat treated Rc 50-55, black oxide finish.



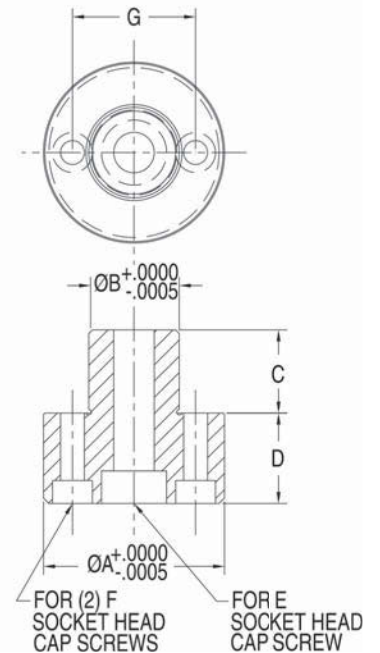
**Type 1**



**Type 2**



**Type 3**



**Type 4**

## CENTER LOCATING KEYS

PART NO.	TYPE	A DIA	B DIA	C	D	E	F	G	H
CLM-25-CLK-.5000	Type 1	.5000	9.843 (25mm)	.90	.75	M10	—	—	.47
CLM-25-CLK-.25	Type 2	.9843 (25mm)		.90	.29	—	—	—	.58
CLM-25-CLK-.30	Type 3	1.1811 (30mm)		.91	.98	M10	—	—	.59
CLM-25-CLK-.32		1.2598 (32mm)							
CLM-25-CLK-1.5000		1.5000							
CLM-25-CLK-.50	Type 4	1.9685 (50mm)		.91	.98	M10	M6	1.339	—
CLM-25-CLK-2.0000		2.000							
CLM-25-CLK-.60		2.3622 (60mm)							
CLM-25-CLK-.65		2.5591 (65mm)							
CLM-25-CLK-.70		2.7559 (70mm)							
CLM-25-CLK-.80		3.1496 (80mm)							
CLM-25-CLK-3.2500		3.2500							