

HEADLESS CARR LOCK® CLAMP

CLAMP BODY: 4340 STEEL, HEAT TREATED RC 40-45
 BALLS: 440C STAINLESS
 CLAMPING SCREW: CARBON STEEL, BLACK OXIDE
 O-RING: VITON



The Headless Carr Lock® System allows accurately locating and clamping at the same time, with just the turn of a hex wrench. Ideal for mounting quick-change tooling on a subplate while taking minimal real estate on the top of your fixture. The Headless Carr Lock® Clamp comes in two variants, primary (-1) and secondary (-2). The primary clamp is used to accurately locate your plate while the looser fit on the secondary clamp reduces binding. Made in USA, available in 13mm, 16mm, and 20mm Shank Diameters.

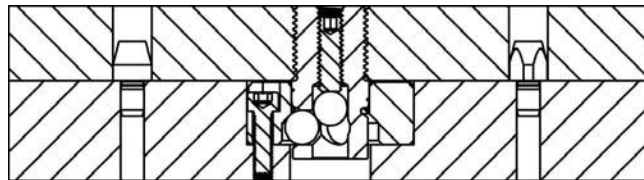
PART NO.	A SHANK DIA NOMINAL	A SHANK DIA ACTUAL	B	C	D THREAD	E HEX	MAX SCREW TORQUE (ft-lbs)
CL-13-HCLC-1	13mm	.5116/.5111	.38	.58	3/8-24	3/32	1
CL-16-HCLC-1	16mm	.6297/.6292	.50	.65	1/2-20	1/8	2
CL-20-HCLC-1	20mm	.7872/.7867	.75	.78	3/4-16	1/8	3

CL-13-HCLC-2	13mm	.4960/.4940	.38	.58	3/8-24	3/32	1
CL-16-HCLC-2	16mm	.6140/.6120	.50	.65	1/2-20	1/8	2
CL-20-HCLC-2	20mm	.7720/.7700	.75	.78	3/4-16	1/8	3

Application Examples:

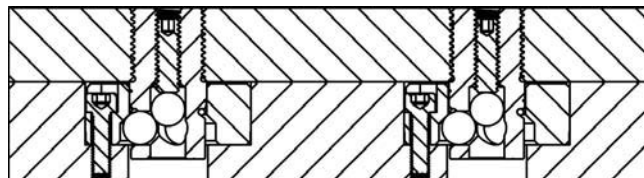
Application 1:

- (1) Headless Carr Lock Clamp
- (1) Round Pin
- (1) Diamond Pin



Application 2 description:

- (2) Headless Carr Lock Clamps



See the website for all available options.

