

CARR LOCK® SYSTEM



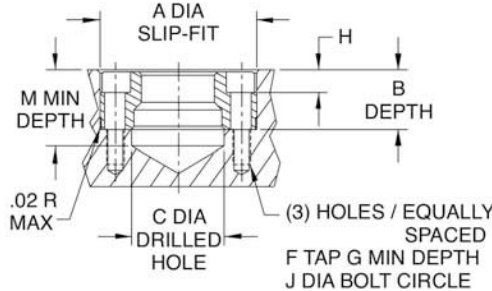
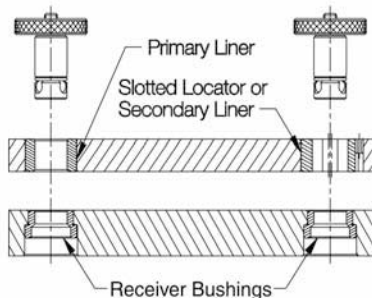
**Face-Mount
Receiver Bushing**



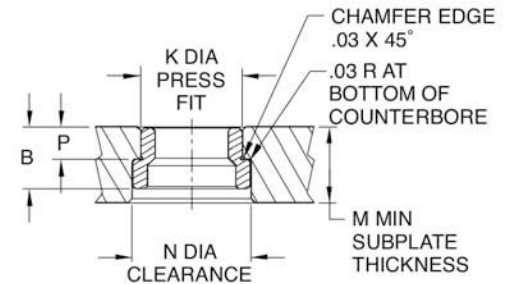
**Back-Mount
Receiver Bushing**

RECEIVER BUSHINGS

Carr Lock® Clamps must be used in conjunction with one of these Receiver Bushings. Face-Mount Receiver Bushings can be bolted into a slip-fit bored hole from above, with three Socket-Head Cap Screws (furnished). Back-Mount Receiver Bushings are more compact, but take more effort to install. Back-mount bushings are installed in the subplate from below, with a slight press fit (measure actual bushing before boring hole to provide .0005 maximum press fit, to avoid I.D. distortion). With either bushing type, the installation holes must be jig bored for accurate size and location. Installed bushings will be approximately .012" below the subplate surface.



**Face Mount
Hole Dimensions**



**Back Mount
Hole Dimensions**

FACE-MOUNT RECEIVER BUSHINGS (INCH)

PART NO.	ID	A DIA		B		C	F	G	H	J DIA	M
		BUSHING	HOLE	BUSHING	HOLE						
CL-13-CLFR	13mm	1.3750	1.3751	.455	.469	.688	#8-32	.31	.180	.984	.75
		1.3746	1.3756		.471						
CL-16-CLFR	16mm	1.4370	1.4371	.455	.469	.812	#8-32	.31	.193	1.125	.75
		1.4366	1.4376		.471						
CL-20-CLFR	20mm	1.6873	1.6874	.623	.637	.812	#10-32	.38	.273	1.362	.83
		1.6869	1.6879		.639						
CL-25-CLFR	25mm	2.0623	2.0624	.785	.799	1.000	1/4-28	.50	.316	1.644	1.00
		2.0619	2.0629		.801						
CL-30-CLFR	30mm	2.2654	2.2655	.857	.871	1.188	1/4-28	.75	.316	1.876	1.23
		2.2650	2.2660		.873						
CL-35-CLFR	35mm	2.6873	2.6874	.890	.904	1.562	5/16-24	.88	.375	2.178	1.28
		2.6869	2.6879		.906						
CL-50-CLFR	50mm	3.4998	3.4999	1.225	1.239	2.156	3/8-24	1.00	.475	2.916	1.80
		3.4994	3.5004		1.241						

(METRIC)

CLM-13-CLFR	13mm	1.3776	1.3780	.455	.468	.531	M4	.39	.177	.984	.78
		1.3772	1.3783		.470						
CLM-16-CLFR	16mm	1.4563	1.4567	.455	.468	.650	M4	.39	.177	1.142	.78
		1.4559	1.4570		.470						
CLM-20-CLFR	20mm	1.7713	1.7717	.623	.637	.807	M5	.47	.236	1.378	.78
		1.7709	1.7720		.639						
CLM-25-CLFR	25mm	2.1650	2.1654	.785	.799	1.004	M6	.59	.276	1.654	.98
		2.1646	2.1657		.801						

BACK-MOUNT RECEIVER BUSHINGS (INCH)

PART NO.	ID	B	K DIA		M	N DIA		
			BUSHING	HOLE		BUSHING	HOLE	P
CL-13-CLBR	13mm	.475	.7870	.7866	.75	.984	.995	.277
						1.005	.275	
CL-16-CLBR	16mm	.475	.8760	.8756	.75	1.125	1.150	.285
						1.160	.283	
CL-20-CLBR	20mm	.673	1.0950	1.0946	.83	1.250	1.275	.345
						1.285	.343	
CL-25-CLBR	25mm	.826	1.3763	1.3759	1.00	1.562	1.588	.416
						1.598	.414	
CL-30-CLBR	30mm	.857	1.6264	1.6260	1.23	1.875	1.901	.432
						1.911	.430	
CL-35-CLBR	35mm	.990	1.8764	1.8760	1.28	2.125	2.150	.493
						2.160	.491	
CL-50-CLBR	50mm	1.225	2.6269	2.6265	1.80	2.937	2.963	.621
						2.973	.619	

(METRIC)

CLM-13-CLBR	13mm	.476	.7890	.7886	.78	.984	1.019	.273
						1.029	.271	
CLM-16-CLBR	16mm	.476	.8677	.8673	.78	1.125	1.137	.286
						1.147	.284	
CLM-20-CLBR	20mm	.673	1.1039	1.1035	.78	1.268	1.294	.345
						1.304	.343	
CLM-25-CLBR	25mm	.826	1.3795	1.3791	.98	1.583	1.609	.416
						1.619	.414	