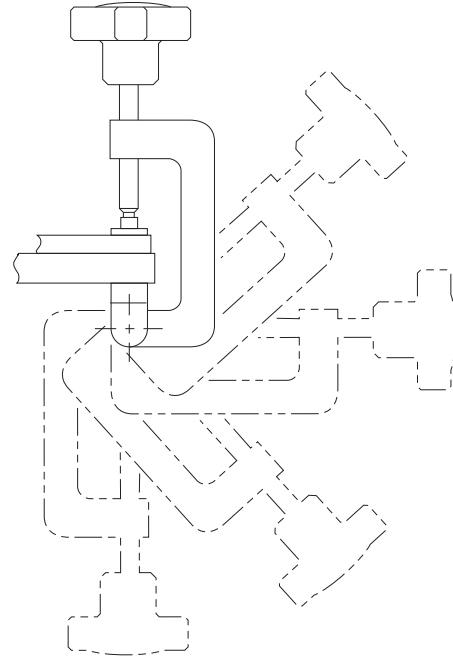


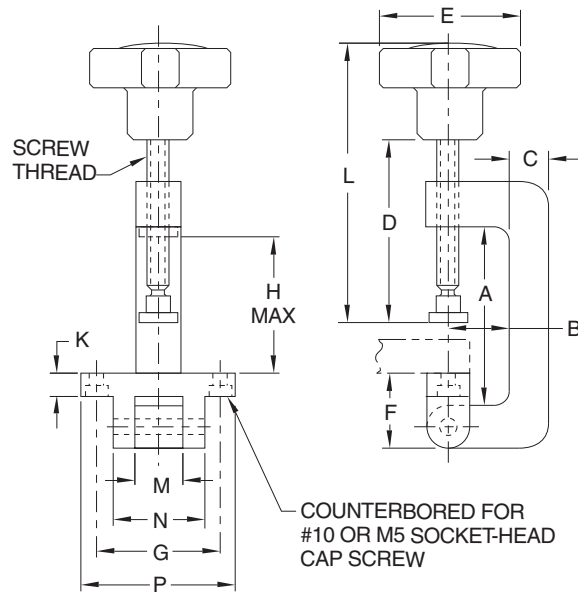
SWING C CLAMPS

FRAME & MOUNTING PAD: MILD STEEL, ZINC PLATED CLEAR CHROMATE
 KNOB: 319 ALUMINUM ALLOY
 SCREW: 1215 STEEL, ZINC
 FOOT: 1215 STEEL, BLACK OXIDE



These unique C Clamps have a hinged pad for fastening permanently to a fixture, allowing them to swing clear for workpiece loading. The hinged mounting pad bolts to the fixture with two Socket-Head Cap Screws. Four-Prong Knob provides a firm grip for applications requiring quick tightening and high torque. Clamping screw is cast securely in the knob and has a removable swivel foot. Available in four sizes.

Swing C Clamps use our patented left-hand-thread swivel-foot system. The ball end of the body screws into the foot for easy installation and removal. Once the ball threads pass beyond the foot threads, the foot can rotate and pivot freely (20° total angle). Foot threads are left-hand to positively prevent accidental block out during use. For other foot types, including Delrin® feet, see Feet for Swivel Screws (order separately).



PART NO.	SCREW THREAD	A	B	C	D	E	F	G	H	K	L	M	N	P
CL-525-SCC	5/16-18	2-1/2	3/4	1/2	2-1/4	1-3/4	7/8	1-1/2	1-31/32	5/16	3-1/4	1/2	1	2
CL-625-SCC	3/8-16	2-1/2	1	5/8	2-13/16	2-1/8	1	1-3/4	1-15/16		4-1/16	5/8	1-1/4	2-1/4
CL-635-SCC		3-1/2			3-9/16				2-15/16		4-13/16			