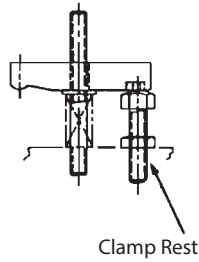


# CLAMP RESTS

STEEL: 1215, CASE HARDENED, BLACK OXIDE FINISH  
STAINLESS STEEL: 300 SERIES, PASSIVATED



Steel



Clamp Rest

Rear support for Slotted-Heel Clamp Straps. Steel version has a hex head for adjustment, and is furnished with a Jam Nut. Stainless steel version has a drilled hole for turning with a rod.



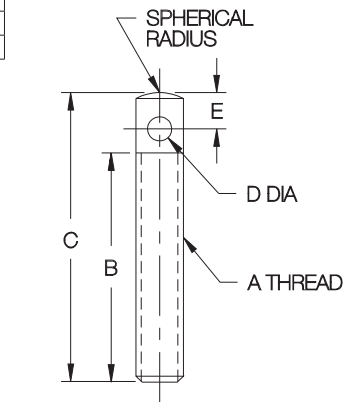
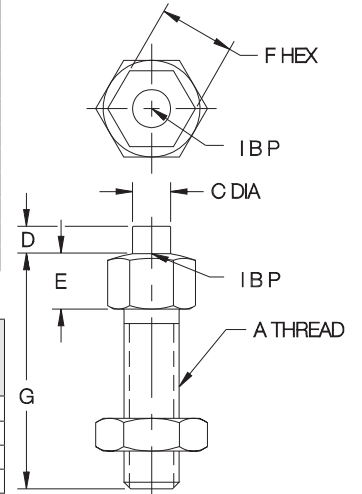
Stainless Steel

## CLAMP RESTS (INCH)

PART NO.	A	C DIA	D	E	F	G
CL-1-CR	1/4-20	5/32	1/8	1/4	7/16	1-1/8
CL-1A-CR	5/16-18	7/32	3/16	5/16	1/2	1-11/16
CL-1B-CR						2-7/16
CL-2-CR	3/8-16	11/32	7/32	3/8	9/16	2-1/32
CL-3-CR						3-21/32
CL-4-CR	1/2-13	11/32	1/4	1/2	11/16	2-1/8
CL-5-CR						3-5/8
CL-6-CR	5/8-11	15/32	1/4	5/8	7/8	2-3/8
CL-7-CR						3-5/8
CL-8-CR	3/4-10	15/32	1/4	5/8	1-1/16	2-1/2
CL-9-CR						3-5/8

## CLAMP RESTS (METRIC)

PART NO.	A THREAD	THREAD PITCH (mm)	C DIA (mm)	D (mm)	E (mm)	F (mm)	G (mm)
CLM-1-CR	M6	1	4	3	5	10	27
CLM-1A-CR	M8	1.25	5.5	4	8	13	45
CLM-2-CR							49
CLM-3-CR	M10	1.5	8.5	6	10	17	94
CLM-4-CR							54
CLM-4A-CR	M12	1.75	12	7	15	24	94
CLM-5-CR							54
CLM-7-CR	M16	2	12	7	15	30	94
CLM-8-CR							63
CLM-9-CR	M20	2.5	12	7	15	30	93



## STAINLESS STEEL (INCH)

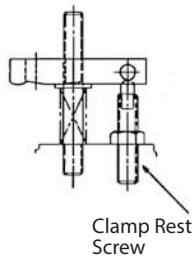
PART NO.	A	B	C	D DIA	E
CL-13410	#10-32	3/4	1	3/32	1/8
CL-13515	1/4-20	1-3/16	1-1/2	1/8	3/16
CL-13615	5/16-18	1-1/8	1-1/2	5/32	3/16
CL-13717	3/8-16	1-3/8	1-3/4	3/16	3/16

# CLAMP REST SCREWS

STEEL: 1215, CASE HARDENED, BLACK OXIDE FINISH



Rear support for Drill-Spot-Heel Clamp Straps.



Clamp Rest Screw

## INCH

PART NO.	A	B	C DIA	D	E
CL-1-CRS	3/8-16	2	.250	.313	1/4
CL-2-CRS		2-12			
CL-3-CRS	1/2-13	3	.344	3/8	3/8
CL-4-CRS		2			
CL-5-CRS	1/2-13	2-1/2	.344	3/8	3/8
CL-6-CRS		3			

