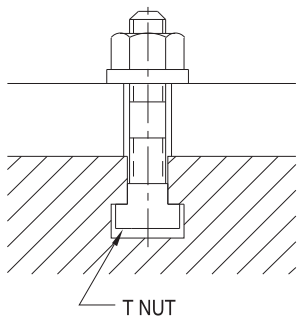


T NUTS

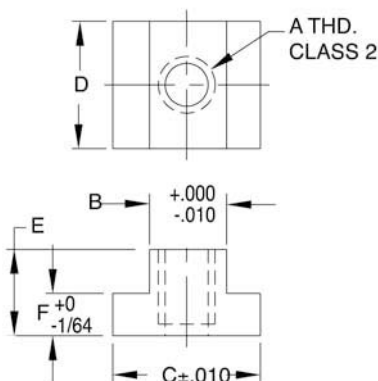
STEEL: MILD STEEL, CASE HARDENED, BLACK OXIDE FINISH
 STAINLESS: 300-SERIES STAINLESS STEEL, PASSIVATED



Sizes for all standard machine tables. Safety-stop feature prevents breaking the machine-table slot. Threads stop one short of going through T Nut to prevent a stud from jacking the nut out of the table.



STEEL (METRIC)



STEEL (INCH)

PART NO.	TABLE SLOT SIZE	A	B	C	D	E	F	
CL-26-TN	5/16 or 8mm	1/4-20	.307	9/16	9/16	1/4	3/16	
CL-18-TN	3/8 or 10mm	1/4-20	.370	5/8	7/8	7/16	7/32	
CL-19-TN		5/16-18						
CL-20-TN	7/16	5/16-18	.432	11/16	7/8	1/2		
CL-00-TN		3/8-16						
CL-12-TN	12mm	3/8-16	.467	3/4	3/4	1/2	17/64	
CL-21-TN	1/2	5/16-18	.495	7/8	7/8	1/2	9/32	
CL-0-TN		3/8-16						
CL-1-TN	9/16 or 14mm	3/8-16	.550		7/8	7/8	1/2	5/16
CL-9-TN		1/2-13						
CL-16-TN	5/8 or 16mm	3/8-16	.620	1	1-1/8	5/8	11/32	
CL-2-TN		1/2-13						
CL-3-TN	11/16 or 18mm	1/2-13	.682	1-1/8	1-1/4	3/4	7/16	
CL-10-TN		5/8-11	.682					
CL-10A-TN			.675					
CL-17-TN	3/4	1/2-13	.745	1-1/4	1-1/4	3/4	15/32	
CL-4-TN		5/8-11						
CL-14-TN	20mm	5/8-11	.782	1-1/4	1-1/4	7/8		
CL-5-TN	13/16	5/8-11	.807					1-1/4
CL-11-TN		3/4-10						
CL-15-TN	22mm	3/4-10	.861	1-1/4	1-1/2	1	1/2	
CL-6-TN	7/8	3/4-10	.870	1-1/2			9/16	
CL-7-TN	1	3/4-10	.995	1-5/8	1-3/4	1	5/8	
CL-22-TN		7/8-9						
CL-8-TN	1-1/16	3/4-10	1.057		2	1-1/8	11/16	
CL-23-TN		7/8-9						
CL-24-TN	1-1/8	7/8-9	1.120	1-3/4	2	1-1/2	3/4	
CL-25-TN		1"-8						

STAINLESS STEEL (INCH)

PART NO.	TABLE SLOT SIZE	A	B	C	D	E	F
CL-00-STN	7/16	3/8-16	.432	11/16	7/8	1/2	7/32
CL-0-STN	1/2		.495	7/8	7/8	1/2	9/32
CL-1-STN	9/16 or 14mm	3/8-16	.550	7/8	7/8	1/2	5/16
CL-9-STN		1/2-13					
CL-2-STN	5/8 or 16mm	1/2-13	.620	1	1-1/8	5/8	11/32
CL-3-STN	11/16 or 18mm	1/2-13	.682	1-1/8	1-1/4	3/4	7/16
CL-10-STN		5/8-11					

PART NO.	TABLE SLOT SIZE	A THREAD	THREAD PITCH (mm)	B (mm)	C (mm)	D (mm)	E (mm)	F (mm)	
CLM-26-TN	5/16" or 8mm	M6	1	7.80	33/64	33/64	3/8	15/64	
CLM-18-TN	3/8" or 10mm	M8	1.25	9.40	15.9	22	11	5.6	
CLM-19-TN									
CLM-00-TN	12mm	M10	1.5	11.86	19	19	12.5	6.7	
CLM-0-TN	1/2"			12.57				7.1	
CLM-1-TN	9/16" or 14mm	M12	1.75	13.87	22.2	22	16	7.9	
CLM-9-TN				15.75				28.5	8.7
CLM-2-TN	5/8" or 16mm	M16	2	17.32	28.6	32	19	11.1	
CLM-3-TN	11/16" or 18mm			19.86				22	11.9
CLM-10-TN				20.50				14.3	
CLM-4-TN	20mm	M20	2.5	21.87	31.8	38	25.5	12.7	
CLM-5-TN	13/16"							14.3	
CLM-6-TN	22mm								