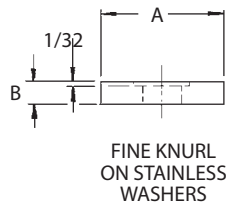
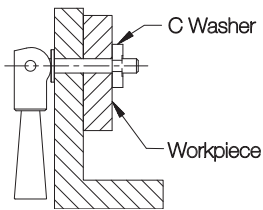
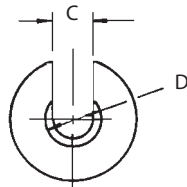


# C WASHERS

STEEL: 1215, CASE HARDENED, BLACK OXIDE FINISH  
 STAINLESS STEEL: 300-SERIES



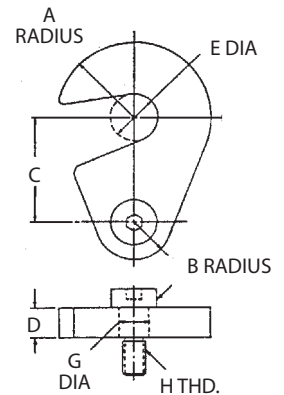
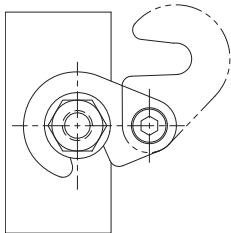
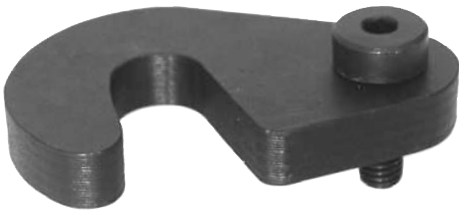
Washer that slides in and out of position for clear loading. Can be used with a nut, or by sliding it into a radial groove on a drawbar. Available in steel or stainless steel.

## INCH & METRIC

STEEL PART NO.	STAINLESS STEEL PART NO.	BOLT SIZE	A DIA	B	C	D DIA
CL-3-CW	—	1/4 or M6	3/4	1/4	17/64	13/32
—	CL-155		7/8	3/16	9/32	25/64
CL-5-CW	—	5/16 or M8	1	3/16	21/64	1/2
—	CL-157		1-1/4	5/16		5/8
CL-6-CW	—	3/8 or M10	3/8	3/8	13/32	23/32
CL-22-CW	—		1-3/4	1/4		23/32
CL-8-CW	—	1/2 or M12	1-7/8	3/8	17/32	29/32
CL-24-CW	—		2-1/4			
CL-9-CW	—	5/8 or M16	2-1/8	3/8	21/32	1-3/32
CL-26-CW	—		2-1/2	7/16		
CL-11-CW	—	3/4 or M18	2-1/2	7/16	25/32	1-9/32
CL-12-CW	—		2-1/2	7/16	1-1/32	1-21/32
CL-15-CW	—	1 or M24	1/2	1/2	1-1/32	1-21/32

# SWING C WASHERS

1018 STEEL, CASE HARDENED, BLACK OXIDE FINISH



Permanently attached C washer that swings out of the way for clear loading. Can be reversed to swing into position either clockwise or counter-clockwise. Shoulder Screw furnished.

## INCH

PART NO.	STUD SIZE	A	B	C	D	E DIA	G DIA	H	SHOULDER SCREW (FURNISHED)
CL-1-SCW	3/8	3/4	3/8	1	1/4	15/32	3/8	5/16-18	CL-24-SS
CL-2-SCW	1/2	1	1/2	1-1/4	3/8	17/32			CL-2-SS
CL-3-SCW	5/8	1-1/8	9/16	1-1/2	3/8	21/32	1/2	3/8-16	CL-3-SS
CL-4-SCW	3/4	1-1/4	5/8	1-3/4	1/2	13/16			CL-4-SS

## METRIC

CLM-1-SCW	M10	19	9.5	25.5	6	12	10mm	M8	CLM-1006-SS
CLM-2-SCW	M12	25.5	12.5	32	9.5	13.5			CLM-1010-SS