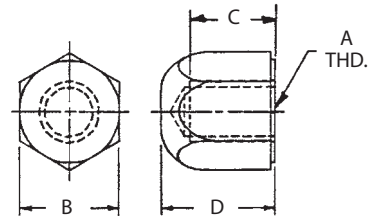
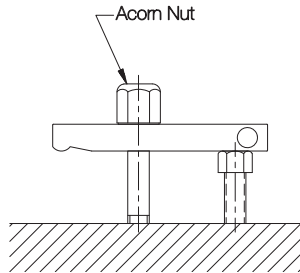


# ACORN NUTS

1215 STEEL, CASE HARDENED, BLACK OXIDE FINISH



Closed end covers the end of a stud to prevent snags or thread damage.

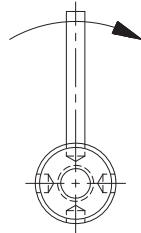


INCH

PART NO.	A	B	C	D
CL-0-AN	1/4-20	1/2	3/8	1/2
CL-1-AN	5/16-18	5/8	13/32	5/8
CL-5-AN	3/8-16	3/4	7/16	3/4
CL-2-AN	1/2-13	7/8	9/16	15/16
CL-3-AN	5/8-11	1-1/16	13/16	1-3/16
CL-4-AN	3/4-10	1-1/4	1	1-3/8

# KNURLED NUTS

1215 STEEL, BLACK OXIDE FINISH



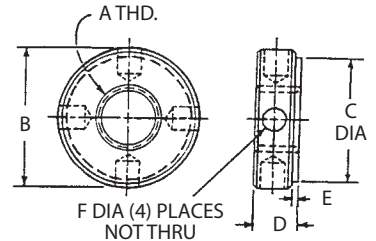
Heavy lock nut that can be tightened by hand or with an extension rod (1/4" or 6mm diameter). Large contact surface.

INCH

PART NO.	A	B DIA	C DIA	D	E	F DIA
CL-0-KN	1/4-20	1-1/8	1	7/16	1/16	.257
CL-00-KN	5/16-18					
CL-1-KN	3/8-16					
CL-2-KN	1/2-13	1-3/8				
CL-3-KN	5/8-11					

METRIC

CLM-6-KN	M6	28.5	25	11	1.6	6.5
CLM-8-KN	M8					
CLM-10-KN	M10					
CLM-12-KN	M12					
CLM-16-KN	M16	35				



# KNURLED CHECK NUTS

1215 STEEL, BLACK OXIDE FINISH



Multipurpose lock nut for finger tightening.

INCH

PART NO.	A	B DIA	C DIA	D	E
CL-1024-TSJN	#10-24	3/4	1/2	1/4	3/16
CL-1032-TSJN	#10-32				
CL-1420-TSJN	1/4-20				5/16
CL-51618-TSJN	5/16-18	1	3/4	3/8	1/4
CL-3816-TSJN	3/8-16				
CL-1213-TSJN	1/2-13				
CL-5811-TSJN	5/8-11				

METRIC

CLM-5-TSJN	M5	19	13	6	5		
CLM-6-TSJN	M6						
CLM-8-TSJN	M8					8	7
CLM-10-TSJN	M10						
CLM-12-TSJN	M12	25	19	10	8		
CLM-16-TSJN	M16						

