

HOOK CLAMPS

CLAMP BODY: 4135 STEEL, HEAT TREATED, BLACK OXIDE FINISH

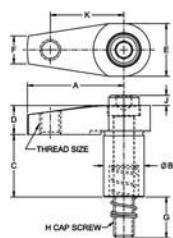
SOCKET HEAD CAP SCREW: STEEL, BLACK OXIDE FINISH

SPRING: SPRING STEEL, BLACK OXIDE FINISH

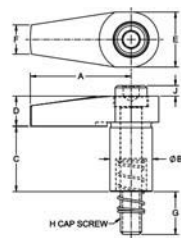


Hook clamps are designed to manually swing into the clamping position, then clamp straight down by screw action. These clamps allow clear loading while swinging away in the unclamped position. Ideal in tight spaces where high clamping force is required. Hooks clamps are available in long arm, long armed tapped or standard arm (short arm, shown here). Available in three sizes, with 5/16-18, 1/2-13, and 5/8-11 mounting screws (M8, M12, and M16 in metric).

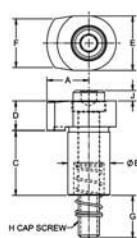
These clamps can be mounted in a reamed hole, or in a Hook-Clamp Holder or Hook-Clamp Mounting Block (order separately). For high-rise clamping, Riser Cylinders are available to extend the range of standard Hook-Clamp Holders.



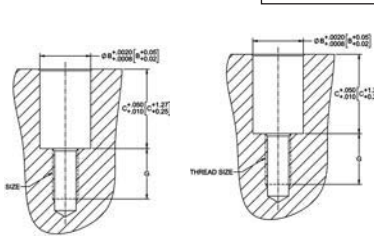
Long Arm



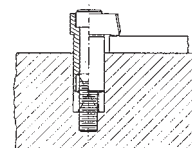
Long Arm-Tapped



Standard Arm



Installation Hole



Compact assembly is easy to install in tight spaces. Socket-head type shown above offers a very low profile.

STANDARD ARM, SOCKET HEAD (INCH)

PART NO.	THREAD SIZE	A	B DIA +0/-0.0012	C	D	E	F	G	H	J	MAXIMUM ALLOWABLE TORQUE (ft-lbs)	MAXIMUM CLAMPING FORCE (lbs)
CL-11-CAC	5/16-18	0.75	0.7500	0.91	0.46	0.87	0.65	0.88	5/16-18 x 2.00	0.06	22	2200
CL-21-CAC	1/2-13	1.00	1.0000	1.54	0.70	1.30	1.17	1.01	1/2-13 x 3.00	0.25	34	2700
CL-31-CAC	5/8-11	1.25	1.2500	1.54	0.81	1.44	1.26	1.02	5/8-11 x 3.25	0.51	59	3700

STANDARD ARM, SOCKET HEAD (METRIC)

PART NO.	THREAD SIZE	THREAD PITCH (mm)	A (mm)	B DIA +0/-0.03 (mm)	C (mm)	D (mm)	E (mm)	F (mm)	G (mm)	H (mm)	J (mm)	MAXIMUM ALLOWABLE TORQUE (Nm)	MAXIMUM CLAMPING FORCE (N)
CLM-11-CAC	M8	1.25	19.1	18	23.1	11.8	22.2	16.4	21.5	M8 x 50	1.6	30	10000
CLM-21-CAC	M12	1.75	25.4	25	39.1	17.8	33	29.6	24.5	M12 x 75	5.6	46	12000
CLM-31-CAC	M16	2.00	31.8	30	39	20.7	36.5	32	28.3	M16 x 85	13	80	16000

LONG ARM, SOCKET HEAD (INCH)

PART NO.	THREAD SIZE	A	B DIA +0/-0.0012	C	D	E	F	G	H	J	MAXIMUM ALLOWABLE TORQUE (ft-lbs)	MAXIMUM CLAMPING FORCE (lbs)
CL-12-CAC	5/16-18	1.19	0.7500	0.91	0.46	0.87	0.38	0.88	5/16-18 x 2.00	0.06	22	2200
CL-22-CAC	1/2-13	2.37	1.0000	1.54	0.70	1.30	0.69	1.01	1/2-13 x 3.00	0.25	34	2700
CL-32-CAC	5/8-11	2.37	1.2500	1.54	0.81	1.44	0.87	1.02	5/8-11 x 3.25	0.51	59	3700

LONG ARM, SOCKET HEAD (METRIC)

PART NO.	THREAD SIZE	THREAD PITCH (mm)	A (mm)	B DIA +0/-0.03 (mm)	C (mm)	D (mm)	E (mm)	F (mm)	G (mm)	H (mm)	J (mm)	MAXIMUM ALLOWABLE TORQUE (Nm)	MAXIMUM CLAMPING FORCE (N)
CLM-12-CAC	M8	1.25	30.3	18	23.1	11.8	22.2	9.7	21.5	M8 x 50	1.6	30	10000
CLM-22-CAC	M12	1.75	60.3	25	39.1	17.8	33	17.5	24.5	M12 x 75	5.6	46	12000
CLM-32-CAC	M16	2.00	60.3	30	39	20.7	36.5	22.2	28.3	M16 x 85	13	80	16000

TAPPED LONG ARM (INCH)

PART NO.	THREAD SIZE	A	B DIA +0/-0.0012	C	D	E	F	G	H	J	K	MAXIMUM ALLOWABLE TORQUE (ft-lbs)	MAXIMUM CLAMPING FORCE (lbs)
CL-13-CAC	5/16-18	1.19	0.7500	0.91	0.46	0.87	0.38	0.88	5/16-18 x 2.00	0.06	0.94	22	2200
CL-23-CAC	1/2-13	2.37	1.0000	1.54	0.70	1.30	0.69	1.01	1/2-13 x 3.00	0.25	1.81	34	2700
CL-33-CAC	5/8-11	2.37	1.2500	1.54	0.81	1.44	0.87	1.02	5/8-11 x 3.25	0.51	1.81	59	3700

TAPPED LONG ARM (METRIC)

PART NO.	THREAD SIZE	THREAD PITCH (mm)	A (mm)	B DIA +0/-0.03 (mm)	C (mm)	D (mm)	E (mm)	F (mm)	G (mm)	H (mm)	J (mm)	K (mm)	MAXIMUM ALLOWABLE TORQUE (Nm)	MAXIMUM CLAMPING FORCE (N)
CLM-13-CAC	M8	1.25	30.3	18	23.1	11.8	22.2	9.7	21.5	M8 x 50	1.6	23.9	30	10000
CLM-23-CAC	M12	1.75	60.3	25	39.1	17.8	33	17.5	24.5	M12 x 75	5.6	46	46	12000
CLM-33-CAC	M16	2.00	60.3	30	39	20.7	36.5	22.2	28.3	M16 x 85	13	46	80	16000