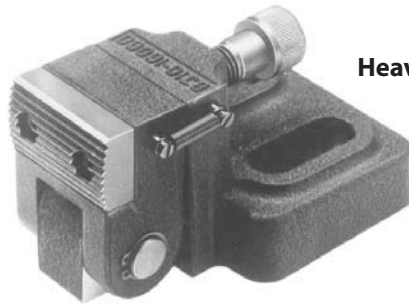


# PIVOTING EDGE CLAMPS

BODY: GRAY CAST IRON, ASTM CLASS 40, BLACK OXIDE FINISH  
 JAW: 1045 STEEL, HEAT TREATED RC 40-45, BLACK OXIDE FINISH  
 BOLT: 4135 STEEL, HEAT TREATED, BLACK OXIDE FINISH

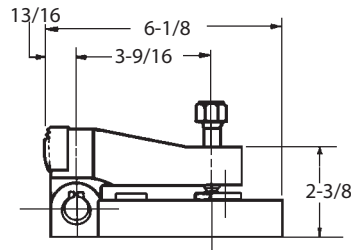
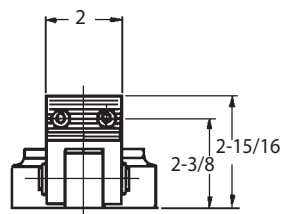
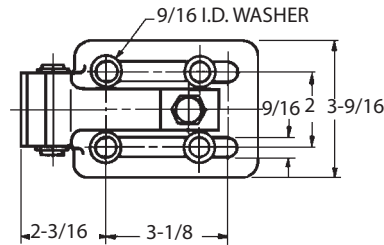
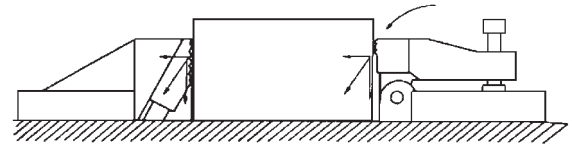


**Standard**



**Heavy**

Large edge clamp that is ideal for tall workpieces. Pivoting nose pushes forward and downward simultaneously. Can be used to clamp against fixed locators, or against the Downthrust Backstops shown below. Replacement jaws are available.



**Standard**

## PIVOTING EDGE CLAMPS

| SIZE     | PART NO.     | MAX. CLAMPING FORCE (LBS) |      | SOCKET-HEAD CAP SCREWS (2 OR 4 REQD) | REPLACEMENT JAW |
|----------|--------------|---------------------------|------|--------------------------------------|-----------------|
|          |              | HORIZ                     | VERT |                                      |                 |
| STANDARD | CL-MF40-1001 | 2000                      | 220  | (4) CL-1/2-13x2.25-SHCS              | CL-MF40-1011    |
| HEAVY    | CL-MF50-1001 | 4200                      | 730  | (2) CL-5/8-11x3.00-SHCS              | CL-MF40-1011    |