

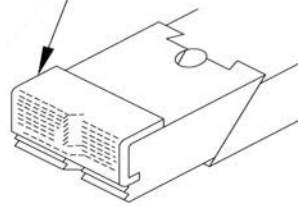
SERRATED EDGE CLAMPS

BODY AND NOSE: 1018 STEEL, CASE HARDENED, BLACK OXIDE FINISH
 CLAMPING SCREW: 4140 STEEL, HEAT TREATED RC 43-45, BLACK OXIDE FINISH
 NOSE COVER: ALUMINUM



Serrated Adjustable Edge Clamp (High Nose)

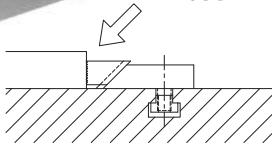
Removable aluminum nose cover, furnished on high-nose version



This low-profile clamp is ideal for gripping the side of a workpiece to keep the top clear for machining. Clamps both forward and down simultaneously, by tightening the socket-head screw in the sliding nose with a hex wrench. V-groove in nose is excellent for clamping round parts or corners. Choice of five sizes, each available in several slot lengths. Slot is tapered to prevent the clamp from backing off under heavy forces. Use two mounting screws on longer clamps.



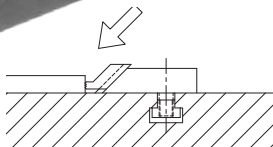
High Nose



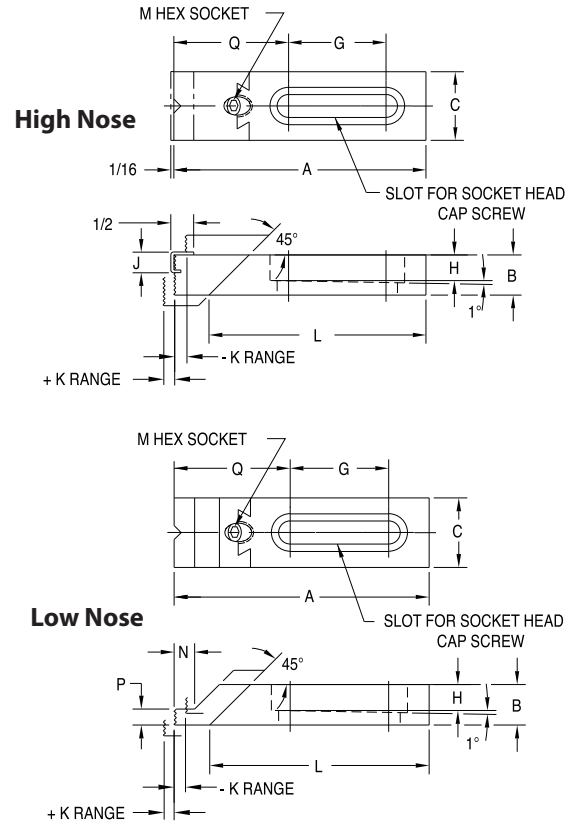
High-nose version is best for most applications. Gripping high up on the workpiece, close to the machining plane, provides maximum clamping rigidity. A removable aluminum nose cover is furnished for clamping soft or machined parts without damage.



Low Nose



Low-nose version is ideal for thin parts, with its extra machining clearance.



ADJUSTABLE — HIGH NOSE

PART NO.	MOUNTING SCREW SIZE	A	B	C	G	H	J	K	L	M	N	P	Q
CL-1-SAC	5/16-18 or M8	2-3/32	5/8	1	1/4	9/32	7/16	1/4	1-9/16	5/32	—	—	1-1/2
CL-5-SAC		3-1/32			1-1/4				2-1/2				1-7/16
CL-15-SAC	3/8-16 or M10	3-3/32	5/8	1-1/4	13/16	3/8	7/16	1/4	2-15/32	3/16	—	—	1-13/16
CL-25-SAC		4-5/32			1-7/16				3-17/32				2
CL-35-SAC		5			2-1/8				4-3/8				1-29/32
CL-45-SAC	1/2-13 or M12	4-5/32	7/8	1-1/2	1-1/4	1/2	5/8	5/16	3-7/32	1/4	—	—	2-7/16
CL-55-SAC		5-21/32			2-1/8				4-23/32				2-11/16
CL-65-SAC		7-1/4			3				6-5/16				2-11/16
CL-75-SAC		5-7/16			1-3/8				4-15/32				3-1/4
CL-95-SAC	5/8-11 or M16	8-7/32	1-1/4	1-3/4	4	5/8	3/4	5/16	7-1/4	5/16	—	—	3
CL-105-SAC		5-7/16			1-3/8				4-15/32				3-9/32
CL-125-SAC	3/4-10 or M20	8-7/32	1-1/4	1-3/4	4	3/4	3/4	5/16	7-1/4	5/16	—	—	3

ADJUSTABLE — LOW NOSE

PART NO.	MOUNTING SCREW SIZE	A	B	C	G	H	J	K	L	M	N	P	Q
CL-0-SAC	5/16-18 or M8	2-3/32	5/8	1	1/4	9/32	—	1/4	1-9/16	5/32	1/8	1/8	1-1/2
CL-00-SAC		3-1/32			1-1/4				2-1/2				1-7/16
CL-10-SAC	3/8-16 or M10	3-3/32	5/8	1-1/4	13/16	3/8	—	1/4	2-15/32	3/16	1/4	1/4	1-13/16
CL-20-SAC		4-5/32			1-7/16				3-17/32				2
CL-30-SAC		5			2-1/8				4-3/8				1-29/32
CL-40-SAC	1/2-13 or M12	4-5/32	7/8	1-1/2	1-1/4	1/2	—	5/16	3-7/32	1/4	1/4	1/4	2-7/16
CL-50-SAC		5-21/32			2-1/8				4-23/32				2-11/16
CL-60-SAC		7-1/4			3				6-5/16				2-9/32
CL-70-SAC		5-7/16			1-3/8				4-15/32				3-1/4
CL-90-SAC	5/8-11 or M16	8-7/32	1-1/4	1-3/4	4	5/8	—	5/16	7-1/4	5/16	5/16	3/8	3
CL-100-SAC		5-7/16			1-3/8				4-15/32				3-1/4
CL-120-SAC	3/4-10 or M20	8-7/32	1-1/4	1-3/4	4	3/4	—	5/16	7-1/4	5/16	5/16	3/8	3