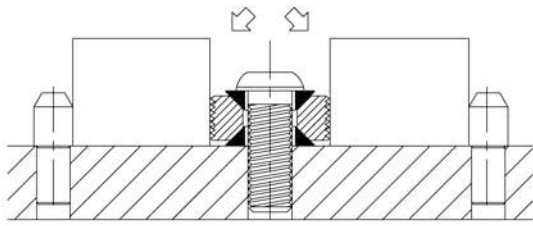
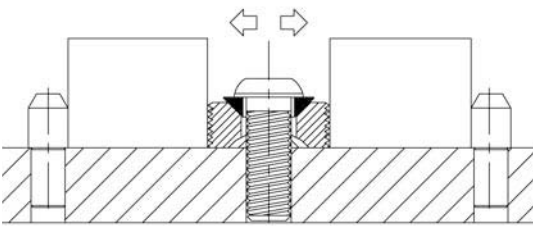


TINY VISE® DOUBLE EDGE CLAMPS



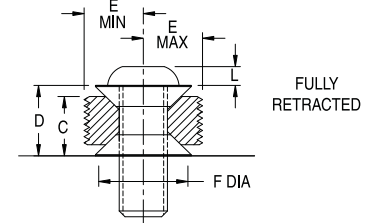
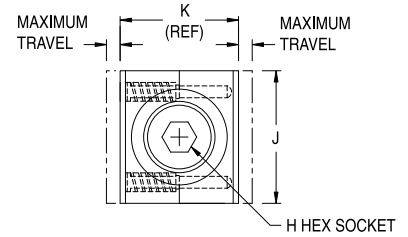
Setup for Downthrust Force
(with Bottom Thrust Washer)

All clamps are supplied with two Thrust Washers (shown in black). The Bottom Thrust Washer is optional. Installing this washer will raise the clamp slightly and provide downthrust force during clamping.

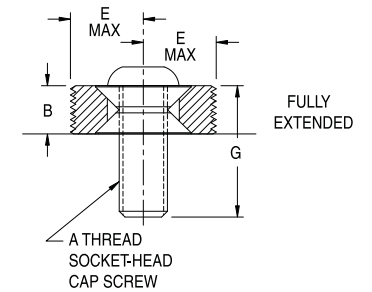


Setup for Horizontal Force
(without Bottom Thrust Washer)

If no downthrust force is required, install the clamp without the Bottom Thrust Washer. Doing so will improve clamping speed because fewer screw turns are required.



FULLY RETRACTED



FULLY EXTENDED

DOUBLE FLAT JAWS (INCH) — SETUP FOR DOWNTHRUST FORCE

PART NO. SERRATED JAWS	PART NO. SMOOTH JAWS	A	B	C	D	E			F DIA	G	H	J	K	L	ALLOWABLE WORKPIECE SIZE DIFFERENTIAL	MAXIMUM TRAVEL (WITH NO SIZE DIFFERENTIAL)	RECOMMENDED TORQUE (FT-LBS)*	APPROX. HORIZONTAL CLAMPING FORCE AT RECOMMENDED TORQUE (LBS)*
						MIN	MID RANGE	MAX										
CL-50-TV	CL-55-TV	5/16-18	.375	.486	.597	.422	.470	.518	.625	1	3/16	1	.844	.16	.048	.096	4.5	450
CL-60-TV	CL-65-TV	3/8-16	.438	.570	.684	.520	.572	.625	.750	1-1/8	7/32	1-1/4	1.060	.19	.052	.105	8	650
CL-80-TV	CL-85-TV	1/2-13	.500	.635	.770	.641	.698	.755	.875	1-1/4	5/16	1-3/8	1.282	.26	.060	.114	19	1200
CL-100-TV	CL-105-TV	5/8-11	.625	.765	.905	.690	.750	.810	1.125	1-1/2	3/8	1-1/2	1.380	.32	.078	.120	39	1800
CL-160-TV	CL-165-TV	1"-8	1.000	1.159	1.318	1.109	1.178	1.247	1.875	2-1/4	3/4	2-1/2	2.218	1.00	.094	.138	150	4500

DOUBLE FLAT JAWS (INCH) — SETUP FOR HORIZONTAL FORCE

CL-50-TV	CL-55-TV	5/16-18	.375	.375	.486	.422	.470	.518	.625	1	3/16	1	.844	.16	.048	.096	9	450
CL-60-TV	CL-65-TV	3/8-16	.438	.438	.552	.520	.572	.625	.750	1-1/8	7/32	1-1/4	1.060	.19	.052	.105	16	650
CL-80-TV	CL-85-TV	1/2-13	.500	.500	.635	.641	.698	.755	.875	1-1/4	5/16	1-3/8	1.282	.26	.060	.114	38	1200
CL-100-TV	CL-105-TV	5/8-11	.625	.625	.765	.690	.750	.810	1.125	1-1/2	3/8	1-1/2	1.380	.32	.078	.120	39	1800
CL-160-TV	CL-165-TV	1"-8	1.000	1.000	1.159	1.109	1.178	1.247	1.875	2-1/4	3/4	2-1/2	2.218	1.00	.094	.138	300	4500

DOUBLE FLAT JAWS (METRIC) — SETUP FOR DOWNTHRUST FORCE

PART NO.	A THREAD	THREAD PITCH (mm)	B (mm)	C (mm)	D (mm)	E			F DIA (mm)	G (mm)	H (mm)	J (mm)	K (mm)	L (mm)	ALLOWABLE WORKPIECE SIZE DIFFERENTIAL (mm)	MAXIMUM TRAVEL (WITH NO SIZE DIFFERENTIAL) (mm)	RECOMMENDED TORQUE (Nm)	APPROX. HORIZONTAL CLAMPING FORCE AT RECOMMENDED TORQUE (N)
						MIN (mm)	MID RANGE (mm)	MAX (mm)										
CLM-50-TV	M8	1.25	9.5	12.3	15.2	10.7	11.9	13.1	16.5	30	5	25.5	21.5	4	1.2	2.4	6.1	2000
CLM-60-TV	M10	1.5	11.1	14.5	17.5	13.2	14.5	15.8	19	30	6	32	26.5	5	1.3	2.7	14	3300
CLM-80-TV	M12	1.75	12.7	16	19.5	16.3	17.7	19.1	23	30	8	35	32.5	6.5	1.5	2.8	24	4900
CLM-100-TV	M16	2	16	19.5	23	17.5	19	20.5	29	40	10	38	35	8	2	3	57	8900
CLM-160-TV	M24	3	25.5	29.5	33.5	28.2	29.9	31.6	47.5	50	19	63.5	56.5	24	2.4	3.4	180	18000

DOUBLE FLAT JAWS (METRIC) — SETUP FOR HORIZONTAL FORCE

CLM-50-TV	M8	1.25	9.5	12.3	15.2	10.7	11.9	13.1	16.5	30	5	25.5	21.5	4	1.2	2.4	12	2000
CLM-60-TV	M10	1.5	11.1	14.5	17.5	13.2	14.5	15.8	19	30	6	32	26.5	5	1.3	2.7	27	3300
CLM-80-TV	M12	1.75	12.7	16	19.5	16.3	17.7	19.1	23	30	8	35	32.5	6.5	1.5	2.8	47	4900
CLM-100-TV	M16	2	16	19.5	23	17.5	19	20.5	29	40	10	38	35	8	2	3	110	8900
CLM-160-TV	M24	3	25.5	29.5	33.5	28.2	29.9	31.6	47.5	50	19	63.5	56.5	24	2.4	3.4	350	18000

*Recommended torque and clamping force are at 1/3 of yield strength, leaving 2/3 of holding capacity to resist external cutting forces, etc.