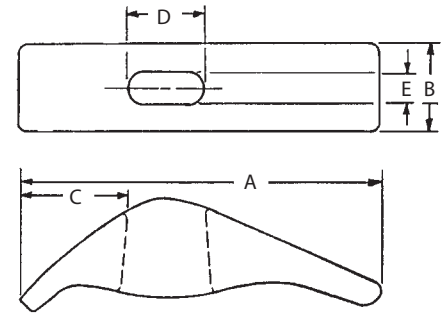


# ALUMINUM ADJUSTABLE CLAMPS

TENZALOY ALUMINUM ALLOY

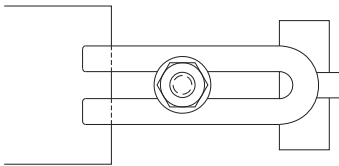


Simple, economical aluminum clamp, similar in function to the Forged Adjustable Clamps.

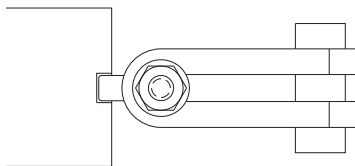
PART NO.	STUD SIZE	CLAMPING RANGE	A	B	C	D	E
CL-8-VAC	3/8 or M10	0 to 2"	4-7/8	1-1/4	1-3/8	1	13/32
CL-10-VAC	1/2 or M12	0 to 2-1/2"	5-1/2	1-1/2	1-1/2	1-1/8	17/32

# FORGED U CLAMPS

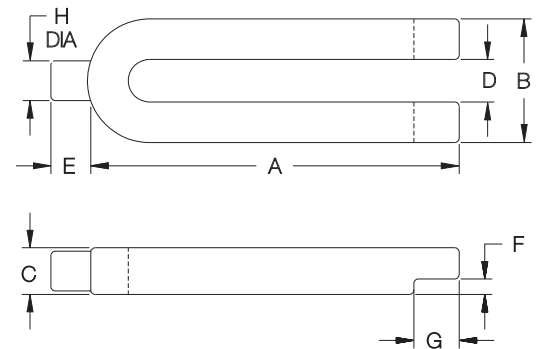
FORGED STEEL, 70,000 PSI YIELD STRENGTH, BLACK OXIDE FINISH



Open U end allows totally removing clamp strap when unclamped. Clamp tips are stepped to provide repeatable location.



Cylindrical pin end minimizes contact area and is useful for clamping in horizontal holes.



PART NO.	BOLT SIZE	A	B	C	D	E	F	G	H
CL-6-FUC	5/8-11 or M16	5-7/16	2-1/4	7/8	11/16	3/4	5/16	3/4	3/4
CL-8-FUC	3/4-10 or M20	7-3/8	2-5/8	1-1/8	13/16	27/32	3/8	1-1/32	13/16
CL-12-FUC	1"-8 or M24	10-15/16	3-3/16	1-3/8	1-1/16	1-3/32	1/2	1-3/16	1-1/32