

DOUBLE-END CLAMP STRAPS

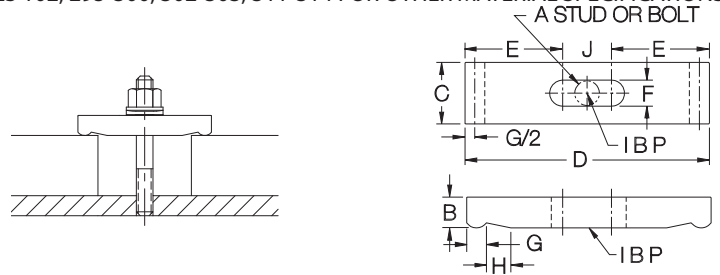
STRAP: 1018 STEEL, CASE HARDENED, BLACK OXIDE FINISH

INFO+: SEE PAGES 102, 295-300, 302-303, 311-314 FOR OTHER MATERIAL SPECIFICATIONS
A STUD OR BOLT



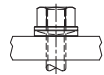
Steel

Clamp strap with two clamping ends, for holding two workpieces simultaneously. Available for 1/4-20 (M6) to 3/4-10 (M20) stud sizes, each in several strap lengths.



STRAPS — STEEL

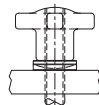
PART NO.	A	B	C	D	E	F	G	H	J
CL-23B-CS	1/4-20 or M6	3/8	5/8	2-1/2	7/8	9/32	1/4	11/32	3/4
CL-23D-CS	5/16-18 or M8	1/2	3/4	3	1-1/2	3/8	5/16	7/16	0
CL-23-CS	3/8-16 or M10	1/2	1-1/8	3	1	27/64	13/32	1/2	1
CL-39-CS	3/4-10 or M20	1	1-3/4	8	3-1/8	13/16	1/2	19/32	1-3/4



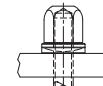
Spherical Nut & Washer
CL-xx-DEA-1



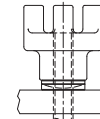
Flange Nut
CL-xx-DEA-2



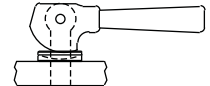
Hand Knob with Spherical Washer
CL-xx-DEA-4



Acorn Nut with Spherical Washer
CL-xx-DEA-5



Bar Knob with Spherical Washer*
CL-xx-DEA-6

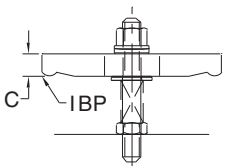
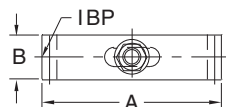


Cam Handle with Spherical Washer
CL-xx-DEA-7

ASSEMBLIES — STEEL (INCH)



Steel



A complete clamp-strap assembly using one of the straps shown above. Select any of the six nut/knob combinations shown above by adding the appropriate suffix to the part number. Other stud lengths are available (order pieces individually).

PART NO.	THREAD SIZE	A	B	C	CLAMP STRAP	FLAT WASHER	SPRING & STUD
CL-1-DEA-x	1/4-20	2-1/2	5/8	3/8	CL-23B-CS	CL-7-FW	CL-1/4-20x2.50-STUD CL-5-SPG
CL-1B-DEA-x	5/16-18	3	3/4	1/2	CL-23D-CS	CL-14-FW	CL-5/16-18x3.00-STUD CL-6-SPG
CL-2-DEA-x	3/8-16		1-1/8	1/2	CL-23-CS	CL-1-FW	CL-3/8-16x3.00-STUD CL-7-SPG
CL-12-DEA-x	1/2-13	6	1-1/4	5/8	CL-30-CS	CL-2-FW	CL-1/2-13x4.00-STUD CL-9-SPG
CL-13-DEA-x	5/8-11		1-1/2	7/8	CL-33-CS	CL-3-FW	CL-5/8-11x4.50-STUD CL-11-SPG
CL-23-DEA-x	3/4-10	8	1-3/4	1	CL-39-CS	CL-4-FW	CL-3/4-10x5.00-STUD CL-13-SPG

ASSEMBLIES — STEEL (METRIC)

PART NO.	THREAD SIZE	A (mm)	B (mm)	C (mm)	CLAMP STRAP	CLAMP SPRING	FLAT WASHER	CLAMPING STUD	JAM NUT
CLM-0-DEA-x	M6	51	16	9.5	CL-23A-CS	CL-5-SPG	CL-7-FW	CLM-6x65-STUD	CLM-6-JN
CLM-1-DEA-x	M6	63.5	16	9.5	CL-23B-CS	CL-5-SPG	CL-7-FW	CLM-6x65-STUD	CLM-6-JN
CLM-1A-DEA-x	M8	51	19	12.5	CL-23C-CS	CL-6-SPG	CL-14-FW	CLM-8x80-STUD	CLM-8-JN
CLM-1B-DEA-x	M8	76	19	12.5	CL-23D-CS	CL-6-SPG	CL-14-FW	CLM-8x80-STUD	CLM-8-JN
CLM-2-DEA-x	M10	76	28.5	12.5	CL-23-CS	CL-7-SPG	CL-1-FW	CLM-10x80-STUD	CLM-10-JN
CLM-4-DEA-x	M10	101.5	28.5	12.5	CL-24-CS	CL-7-SPG	CL-1-FW	CLM-10x80-STUD	CLM-10-JN
CLM-6-DEA-x	M10	127	28.5	12.5	CL-25-CS	CL-7-SPG	CL-1-FW	CLM-10x80-STUD	CLM-10-JN
CLM-8-DEA-x	M12	101.5	32	16	CL-27-CS	CL-9-SPG	CL-2-FW	CLM-12x95-STUD	CLM-12-JN
CLM-10-DEA-x	M12	124	32	16	CL-28-CS	CL-9-SPG	CL-2-FW	CLM-12x95-STUD	CLM-12-JN
CLM-12-DEA-x	M12	152.5	32	16	CL-30-CS	CL-9-SPG	CL-2-FW	CLM-12x95-STUD	CLM-12-JN
CLM-15-DEA-x	M16	127	38	22	CL-32A-CS	CL-11-SPG	CL-3-FW	CLM-16x110-STUD	CLM-16-JN
CLM-13-DEA-x	M16	152.5	38	22	CL-33-CS	CL-11-SPG	CL-3-FW	CLM-16x110-STUD	CLM-16-JN
CLM-20-DEA-x	M20	152.5	44.5	25.5	CL-37-CS	CL-13-SPG	CLM-10-FW	CLM-20x125-STUD	CLM-20-JN
CLM-22-DEA-x	M20	178	44.5	25.5	CL-38-CS	CL-13-SPG	CLM-10-FW	CLM-20x125-STUD	CLM-20-JN
CLM-23-DEA-x	M20	203	44.5	25.5	CL-39-CS	CL-13-SPG	CLM-10-FW	CLM-20x125-STUD	CLM-20-JN