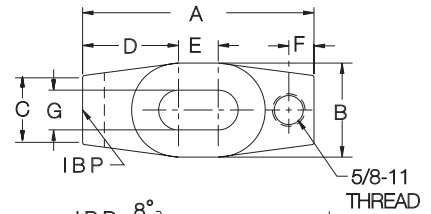


# FORGED CLAMP STRAPS

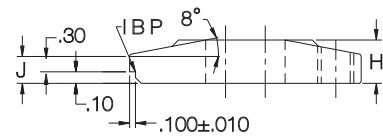
FORGED STEEL, 70,000 PSI YIELD STRENGTH, BLACK OXIDE FINISH



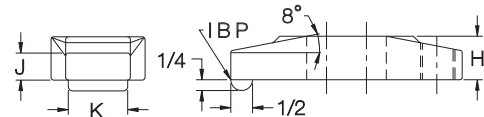
**Straight  
Locator Nose**



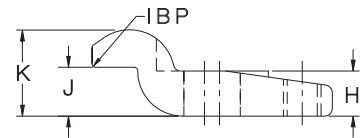
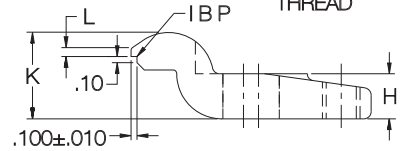
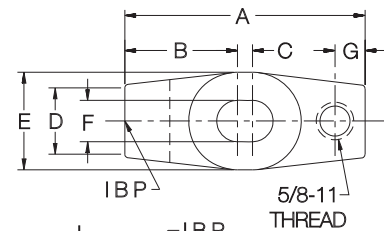
**Straight  
Plain Nose**



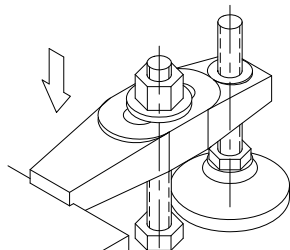
**Gooseneck  
Locator Nose**



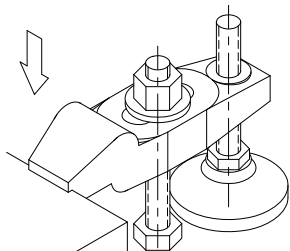
**Gooseneck  
Plain Nose**



High-strength Tapped-Heel Clamp Strap available in straight or gooseneck design, with locator nose or plain nose. Locator-nose version is ideal for workpieces with machined sides. The accurately machined notch ensures precise, repeatable clamp location for increased machining clearance.



**Straight  
Locator Nose  
Clamp**



**Gooseneck  
Locator Nose  
Clamp**

## STRAIGHT — LOCATOR NOSE (INCH)

PART NO.	STUD SIZE	A	B	C	D	E	F	G	H	J	K
CL-4-FSCS	5/8-11	4	1-5/8	1-3/16	1-21/32	11/16	7/16	11/16	3/4	1/2	-
CL-6-FSCS		6	1-3/4	1-1/4	2-5/16	1-3/8	9/16		7/8	9/16	-
CL-8-FSCS	3/4-10	8	2-1/8	1-1/2	3	2	11/16	13/16	1-1/8	3/4	-

## STRAIGHT — PLAIN NOSE (INCH)

CL-4-FRCS	5/8-11	4	1-5/8	1-3/16	1-21/32	11/16	7/16	11/16	3/4	1/2	1
CL-6-FRCS		6	1-3/4	1-1/4	2-5/16	1-3/8	9/16		7/8	9/16	
CL-8-FRCS	3/4-10	8	2-1/8	1-1/2	3	2	11/16	13/16	1-1/8	3/4	1-1/4

## GOOSENECK — LOCATOR NOSE (INCH)

PART NO.	STUD SIZE	A	B	C	D	E	F	G	H	J	K	L
CL-40-FGNS	5/8-11	4	1-31/32	3/16	1-3/16	1-3/4	11/16	1/2	3/4	3/4	1-7/16	.15
CL-60-FGNS		6	2-17/32	1	1-1/4	1-3/4		5/8	7/8	15/16	1-9/16	.25
CL-80-FGNS	3/4-10	8	3-9/32	1-5/8	1-9/16	2-1/4	13/16	1	1-1/8	1-1/8	2	.35

## GOOSENECK — PLAIN NOSE (INCH)

CL-4-FGNS	5/8-11	4	1-31/32	3/16	1-3/16	1-3/4	11/16	1/2	3/4	3/4	1-7/16	-
CL-6-FGNS		6	2-17/32	1	1-1/4	1-3/4		5/8	7/8	15/16	1-9/16	-
CL-8-FGNS	3/4-10	8	3-9/32	1-5/8	1-9/16	2-1/8	13/16	1	1-1/8	1-1/8	2	-