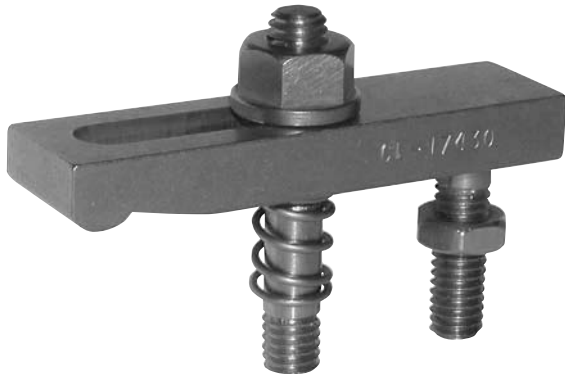


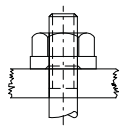
# SLOTTED-HEEL CLAMP STRAPS

INFO+: SEE PAGES 116, 249, 295-300, 302-303, 313-314 FOR MATERIAL SPECIFICATIONS



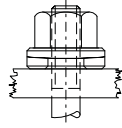
**Stainless Steel  
(Miniature)**

A complete clamp-strap assembly using (INFO+) a stainless steel slotted-heel strap from page 248. Select any of the four nut/knob combinations shown below by adding the appropriate suffix to the part number. Fixture Stud has a thread-locking interference thread at the bottom end to install permanently in a fixture plate.



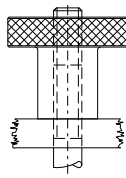
Flange Nut

CL-xxxx-1



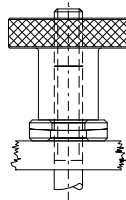
Spherical Nut  
and Washer

CL-xxxx-2



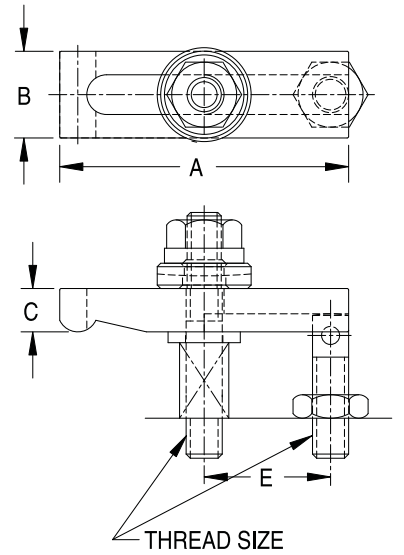
Knurled  
Knob

CL-xxxx-3



Knurled Knob  
and Spherical  
Washer

CL-xxxx-4



## ASSEMBLIES — STAINLESS, MINIATURE (INCH)

PART NO.	THREAD SIZE	A	B	C	E	CLAMP STRAP	CLAMP REST	SPRING	FLAT WASHER	STUD	JAM NUT
CL-2715-x	#10-32	1-1/2	1/2	1/4	21/32	CL-17215	CL-13410	CL-2430.7	CL-254	CL-11415	CL-3-FJN-S
CL-2825-x	1/4-20	2-1/2	5/8	3/8	1-1/8	CL-17325	CL-13515	CL-2440.7	CL-255	CL-11520	CL-4-JN-S
CL-2925-x	5/16-18	2-1/2	3/4	3/8	1-3/32	CL-17425	CL-13615	CL-2450.7	CL-256	CL-11620	CL-5-JN-S
CL-3030-x	3/8-16	3	1	1/2	1-5/16	CL-17530	CL-13717	CL-2461.0	CL-257	CL-11725	CL-6-JN-S