

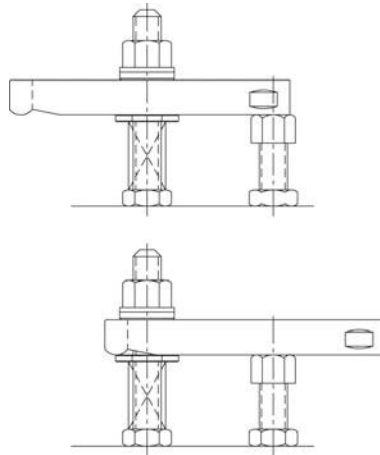
SLOTTED-HEEL CLAMP STRAPS

STEEL: 1018, CASE HARDENED, BLACK OXIDE FINISH
 STAINLESS STEEL: 300 SERIES

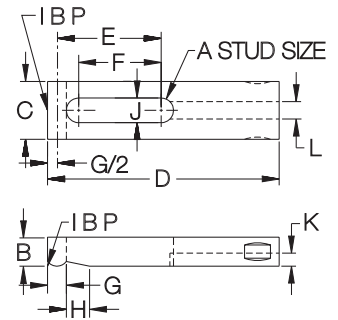


**Steel and
 Stainless Steel**

Popular Clamp Strap with a slot underneath to allow sliding it straight back for clear loading. Two drill spots on the sides provide a secure grip for retracting the clamp. Available in steel for 1/4-20 (M6) to 3/4-10 (M20) stud sizes, or stainless steel for #10-32 to 3/8-16 stud sizes. Each size is available in several strap lengths.



INFO+: See page 249 for complete assemblies using these Clamp Straps.



STRAPS — STEEL

PART NO.	A	B	C	D	E	F	G	H	J	K	L
CL-0-CS	1/4-20 or M6	3/8	5/8	2	27/32	19/32	1/4	11/32	9/32	5/32	3/16
CL-1-CS				2-1/2	1-3/32	13/16					
CL-1A-CS	5/16-18 or M8	1/2	3/4	2-1/2	27/32	1/2	5/16	7/16	11/32	7/32	1/4
CL-1B-CS				3	1-11/32	1					
CL-2-CS	3/8-16 or M10	1/2	1-1/8	3	1-9/32	7/8	13/32	1/2	27/64	9/32	3/8
CL-3A-CS				3-1/2	1-17/32	1-1/8					
CL-3-CS				4	1-25/32	1-3/8					
CL-4-CS				5	2-9/32	1-7/8					
CL-5-CS	1/2-13 or M12	5/8	1-1/4	6	2-25/32	2-3/8	13/32	1/2	17/32	9/32	3/8
CL-6A-CS				3-1/2	1-1/2	1-1/32					
CL-6-CS				4	1-3/4	1-9/32					
CL-8-CS	5/8-11 or M16	7/8	1-1/2	5	2-1/4	1-25/32	1/2	19/32	21/32	9/32	1/2
CL-10-CS				6	2-3/4	2-9/32					
CL-15A-CS				4	1-11/16	1-3/32					
CL-16-CS				5	2-3/16	1-19/32					
CL-18-CS	3/4-10 or M20	1	1-3/4	6	2-11/16	2-3/32	1/2	19/32	13/16	5/16	1/2
CL-18A-CS				6-1/2	2-15/16	2-11/32					
CL-19-CS	3/4-10 or M20	1	1-3/4	6	2-5/8	2	1/2	19/32	13/16	5/16	1/2
CL-21-CS				7	3-1/8	2-9/16					
CL-22A-CS	8	3-5/8	3-1/8								

STRAPS — STAINLESS, MINIATURE

CL-17215	#10-32	1/4	1/2	1-1/2	21/32	15/32	3/16	5/16	7/32	3/32	7/32
CL-17325	1/4-20	3/8	5/8	2-1/2	1-1/8	15/16	1/4	3/8	9/32	1/8	9/32
CL-17540	3/8-16	1/2	1	4	1-13/16	1-1/2	3/8	1/2	13/32	3/16	13/32