

# PALLET FIXTURE KEYS

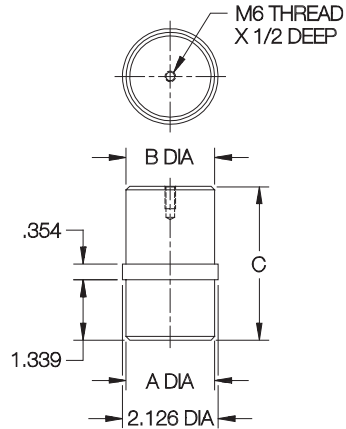
1215 STEEL, CASE HARDENED, BLACK OXIDE FINISH



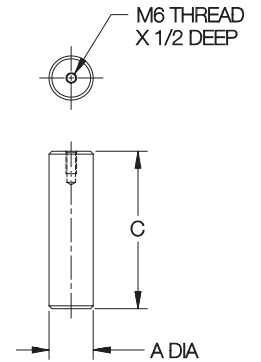
**Center Pin**



**Radial Pin**

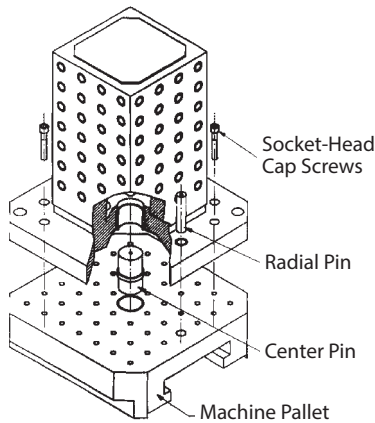


**Center Pin**



**Radial Pin**

Fixture keys for mounting tooling plates and blocks on standard DIN pallets. Each pallet requires one Center Pin and one Radial Pin (for orientation). The Radial Pin is usually removed after fastening the pallet to the machine table.



## CENTER PINS

PART NO.	A DIA		B DIA		C
	NOMINAL	ACTUAL	NOMINAL	ACTUAL	
CLM-25-PFKC	50mm	1.9681/1.9676	25mm	.9839/.9835	2.87
CLM-30-PFKC			30mm	1.1808/1.1804	3.42
CLM-50-PFKC			50mm	1.9681/1.9676	

## RADIAL PINS

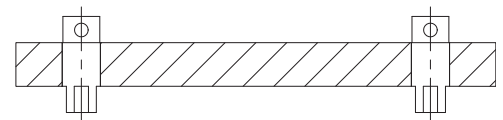
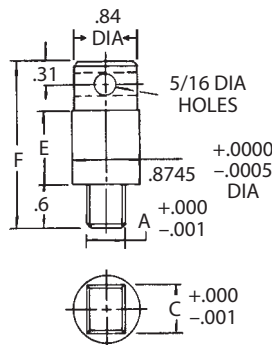
PART NO.	A DIA		C
	NOMINAL	ACTUAL	
CLM-20-PFKR	20mm	.7871/.7867	3.50
CLM-25-PFKR	25mm	.9839/.9835	4.92

# MILL FIXTURE KEYS

1215 STEEL, CASE HARDENED, BLACK OXIDE FINISH



Can be removed from above after mounting fixture on machine. Fits either 11/16 or 13/16 table slots by turning 90°. Install in a 7/8 reamed hole. Concentricity .0005 or better.



## INCH

PART NO.	TABLE SLOT SIZES	A	C	E		F	
				11/16	13/16	1.00	2.20
CL-1-MFK-1	11/16 or 13/16	.6873	.8123	1.00	2.20	3.20	4.40
CL-1-MFK-2				3.20	4.40		