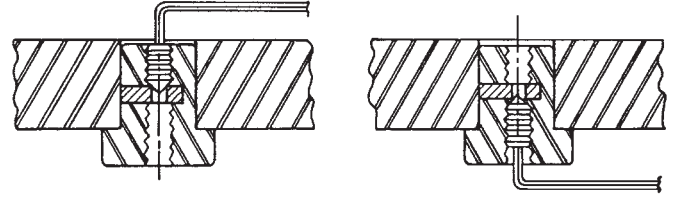


SURE-LOCK™ FIXTURE KEYS

1215 STEEL, CASE HARDENED, BLACK OXIDE FINISH

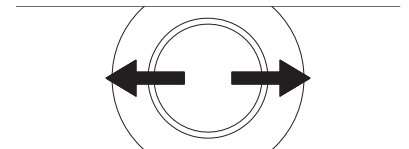


Lock in place from above or below using a hex wrench.

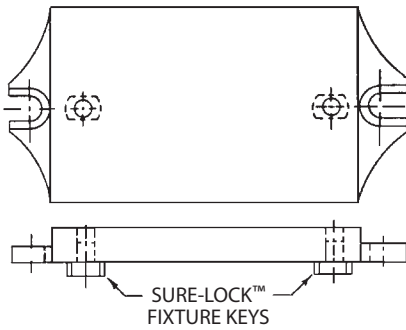
Perfect fixture key for most applications. Keys are interchangeable because they all fit in a 5/8 reamed hole. Allows mounting any fixture on any machine simply by switching keys. Eliminates the need to slot fixtures. Concentricity .0005 TIR or better. Available for inch or metric machine-table slots.

INCH

PART NO.	TABLE SLOT SIZE	A	B	C	D
CL-375-SLFK	3/8	.3750	1/2	3/8	.23
CL-437-SLFK	7/16	.4375			
CL-500-SLFK	1/2	.5000	3/4	7/16	.41
CL-5000-SLFK			1/2	3/8	.23
CL-562-SLFK	9/16	.5625	3/4	7/16	.41
CL-5625-SLFK			1/2	3/8	.23
CL-625-SLFK	5/8	.6250	3/4	7/16	.41
CL-6250-SLFK			1/2	3/8	.23
CL-687-SLFK	11/16	.6875	3/4	7/16	.41
CL-6875-SLFK			1/2	3/8	.23
CL-7500-SLFK	3/4	.7500	3/4	7/16	.41
CL-8125-SLFK	13/16	.8125			

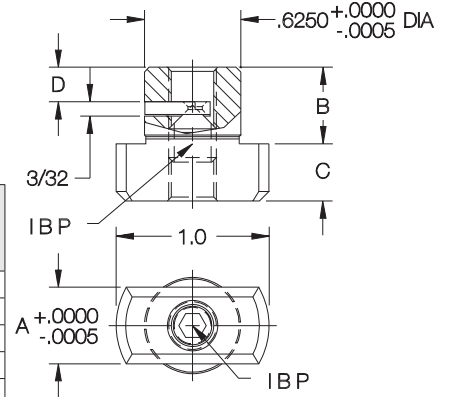


Patented locking action aligns fixture key perfectly with slot axis.



METRIC

PART NO.	TABLE SLOT SIZE	A (mm)	SHANK DIA	B (mm)	C (mm)	D (mm)
CL-12-SLFK	12mm	12	5/8"	12.5	9.5	9
CL-14-SLFK	14mm	14	5/8"	19	11	10.5
CL-16-SLFK	16mm	16	5/8"	19	11	10.5
CL-18-SLFK	18mm	18	5/8"	19	11	10.5
CL-20-SLFK	20mm	20	5/8"	19	11	10.5
CL-22-SLFK	22mm	22	5/8"	19	11	10.5



REAMED-HOLE FIXTURE KEYS

1215 STEEL, CASE HARDENED, BLACK OXIDE FINISH



Each key fits two different table slots by turning 90°. Install in a 5/8 reamed hole. Fasten from above with a 5/16–18 Socket-Head Cap Screw, or from below with a 1/4–20 Socket-Head Cap Screw. Concentricity .0005 or better.

INCH

PART NO.	TABLE SLOT SIZES	A	B
CL-1-RFK	5/8 and 11/16	.6875	.7500
CL-2-RFK	5/8 and 3/4	.6250	
CL-3-RFK	5/8 and 13/16	.8125	.7500
CL-4-RFK	11/16 and 3/4	.6875	
CL-6-RFK	3/4 and 13/16	.7500	.8125

