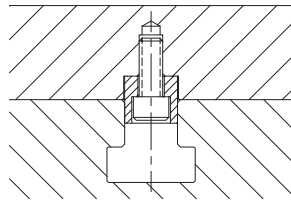
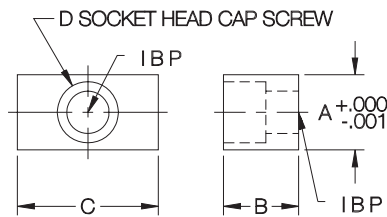


# FIXTURE KEYS

1018 STEEL, CASE HARDENED, BLACK OXIDE FINISH



Standard key for fixtures slotted to mount on one specific machine table. Depth of slot in fixture should be 1/2 of B dimension.



## INCH

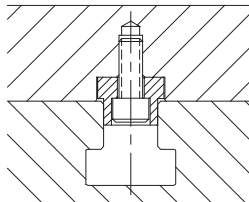
PART NO.	TABLE SLOT SIZE	A	B	C	D
CL-1-FK	1/2	.5000	1/2	3/4	1/4
CL-3-FK	5/8	.6250		3/4	5/16
CL-4-FK	11/16	.6875		1	
CL-5-FK	3/4	.7500		1-1/4	
CL-6-FK	13/16	.8125			

## METRIC

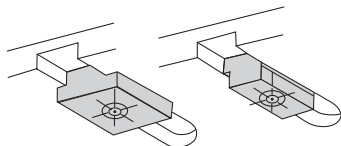
CLM-12-FK	12mm	12	10	22	M6
CLM-14-FK	14mm	14			
CLM-16-FK	16mm	16			
CLM-18-FK	18mm	18			
CLM-20-FK	20mm	20			

# STEP FIXTURE KEYS

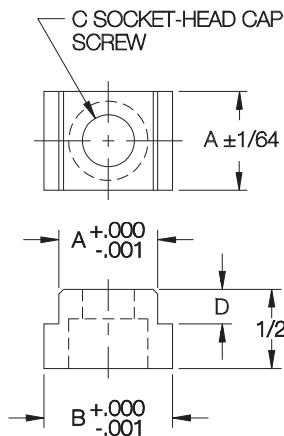
MILD STEEL, CASE HARDENED, BLACK OXIDE FINISH



Adapts a key-slotted fixture or vise to machine tables with a different slot size. Available for inch or metric slots. Top and bottom of key are centered within .0005 of each other.



Step Fixture Keys are available for machine-table slots either larger or smaller than a given fixture slot. (Viewed from underside of fixture.)



## INCH FIXTURE SLOTS

PART NO.	FIXTURE SLOT SIZE	A	TABLE SLOT SIZE	B	C SOCKET-HEAD CAP SCREW (ORDER SEPARATELY)	D
CL-10-SFK-18	5/8	.6250	18mm	.7087	CL-5/16-18X.75-SHCS	7/32
CL-11-SFK-625	11/16	.6875	5/8	.6250		CL-5/16-18X.75-SHCS
CL-11-SFK-16			16mm	.6299	9/32	
CL-11-SFK-18			18mm	.7087	7/32	
CL-11-SFK-20			20mm	.7874		
CL-12-SFK-625	3/4	.7500	5/8	.6250	CL-5/16-18X.75-SHCS	9/32
CL-12-SFK-18			18mm	.7087		9/32
CL-13-SFK-18	13/16	.8125	18mm	.7087	CL-5/16-18X.75-SHCS	9/32

## METRIC FIXTURE SLOTS

PART NO.	FIXTURE SLOT SIZE	A	TABLE SLOT SIZE	B	C SOCKET-HEAD CAP SCREW (ORDER SEPARATELY)	D
CL-20-SFK-18	20mm	20	18mm	18mm	CLM-6X15-SHCS	7