

CONSTRUCTION BALLS (ADJUSTABLE TYPE)

1144 STEEL, HEAT TREATED RC 54-56



CL-5-CB
1/2" Ball



CL-3-CB
1/2" Ball



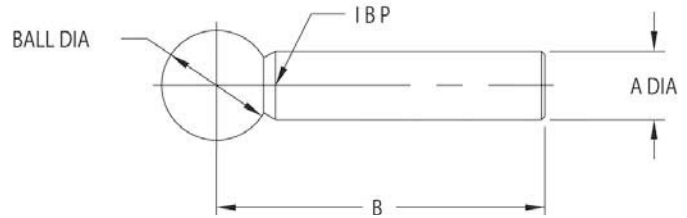
CL-1-CB
1/2" Ball



CL-00-CB
3/8" Ball



CL-0-CB
1/4" Ball



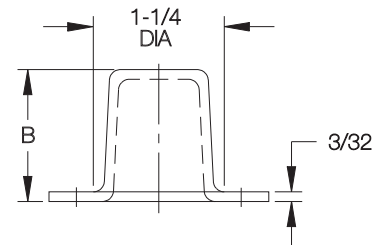
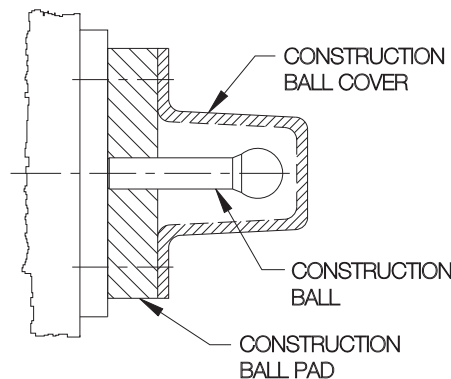
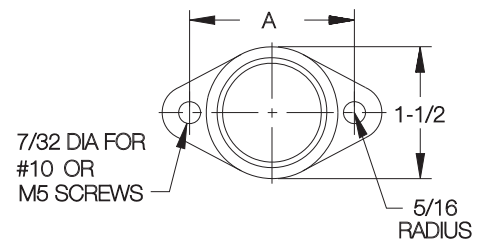
Precision tooling ball used as a reference point for critical inspection, layout, and machining operations. Adjustable type has no shoulder, so it can be set at any desired height then locked with a set screw. Concentricity between ball and shank is .0002" TIR. Available with ball diameters from 1/4 to 1/2", in various shank diameters and lengths.

STEEL (INCH)

PART NO.	BALL DIA		A DIA		B
	NOMINAL	ACTUAL	NOMINAL	ACTUAL	
CL-0-CB	1/4	.2500/.2497	1/8	.1250/.1246	.56
CL-00-CB	3/8	.3750/.3747	3/16	.1875/.1871	.75
CL-1-CB	1/2	.5000/.4997	1/4	.2500/.2497	1.50
CL-3-CB			5/16	.3125/.3122	
CL-5-CB			3/8	.3750/.3747	

CONSTRUCTION-BALL COVERS

ZINC DIE CASTING



Sturdy cover that protects a Construction Ball from damage after installation.

PART NO.	A	B
CL-2-COVER	1-7/8	1-1/2