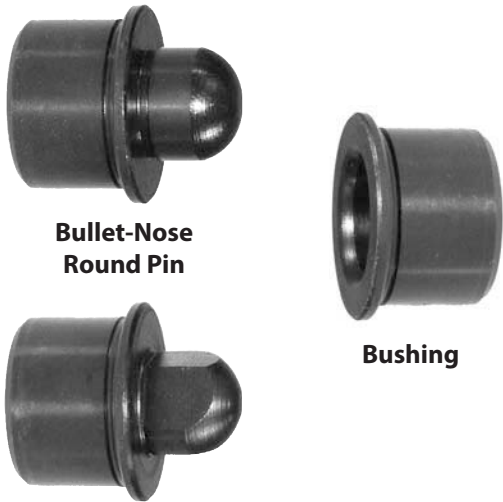


BULLET-NOSE PINS

1144 STEEL, HEAT TREATED RC 50-55, BLACK OXIDE FINISH



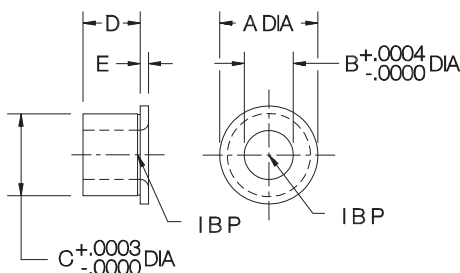
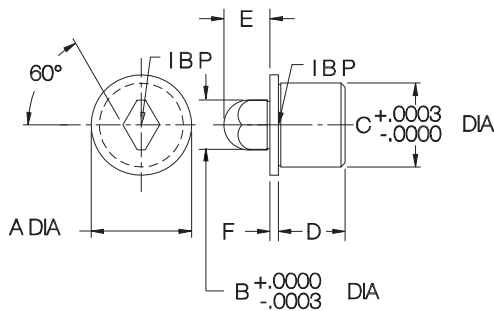
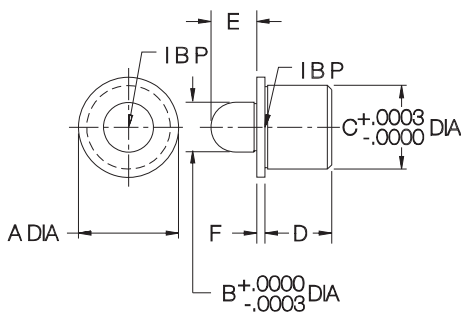
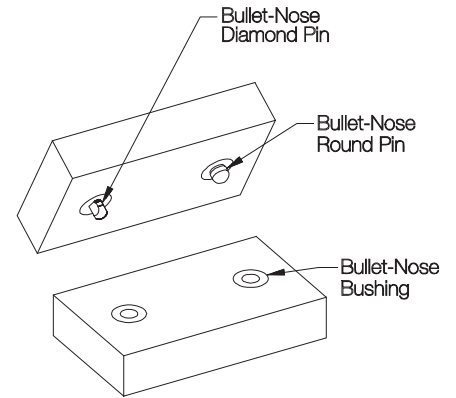
Bullet-Nose Round Pin

Bushing

Bullet-Nose Diamond Pin

Bullet-Nose Round Pins and Diamond Pins are often used together (with matching bushings) to align two pieces of a fixture. The Diamond Pin is relieved, to locate only radially around the round pin, avoiding redundant location. This prevents binding, yet still maintains high accuracy.

The pin's shank diameter and the bushing's OD are the same size to allow boring the installation hole in both fixture pieces at the same time, for greater accuracy. The pin's head and shank diameters are concentric to within .0005 TIR. The bushing's ID and OD are concentric to within .0003 TIR.



ROUND PINS (INCH)

PART NO.	A DIA	B HEAD DIA NOMINAL	B HEAD DIA ACTUAL	C SHANK DIA NOMINAL	C SHANK DIA ACTUAL	D	E	F
CL-8-BND	9/16	1/4	.2499	13/32	.4075	3/8	7/32	1/16
CL-9-BND	5/8	5/16	.3124	1/2	.5014		9/32	
CL-10-BND	3/4	3/8	.3748	5/8	.6265	1/2	11/32	
CL-11-BND	7/8	1/2	.4998	3/4	.7515	3/4	13/32	1/8
CL-12-BND	1-1/8	3/4	.7498	1	1.0015		9/16	
CL-13-BND	1-1/2	1	.9998	1-3/8	1.3768	3/4	3/4	

ROUND PINS (METRIC)

PART NO.	A DIA	B HEAD DIA NOMINAL	B HEAD DIA ACTUAL	C SHANK DIA NOMINAL	C SHANK DIA ACTUAL	D	E	F
CLM-6-BRP	13mm	6mm	5.997	10mm	10.033	9mm	6mm	2mm
CLM-8-BRP	15mm	8mm	7.997	12mm	12.035		7mm	
CLM-10-BRP	18mm	10mm	9.995	15mm	15.038	9mm		
CLM-12-BRP	22mm	12mm	11.995	18mm	18.038	11mm	10mm	

DIAMOND PINS (INCH)

PART NO.	A DIA	B HEAD DIA NOMINAL	B HEAD DIA ACTUAL	C SHANK DIA NOMINAL	C SHANK DIA ACTUAL	D	E	F
CL-8-BDP	9/16	1/4	.2499	13/32	.4075	3/8	7/32	1/16
CL-9-BDP	5/8	5/16	.3124	1/2	.5014		9/32	
CL-10-BDP	3/4	3/8	.3748	5/8	.6265	1/2	11/32	
CL-11-BDP	7/8	1/2	.4998	3/4	.7515	3/4	13/32	1/8
CL-12-BDP	1-1/8	3/4	.7498	1	1.0015		9/16	
CL-13-BDP	1-1/2	1	.9998	1-3/8	1.3768	3/4	3/4	

DIAMOND PINS (METRIC)

PART NO.	A DIA	B HEAD DIA NOMINAL	B HEAD DIA ACTUAL	C SHANK DIA NOMINAL	C SHANK DIA ACTUAL	D	E	F
CLM-6-BDP	13mm	6mm	5.997	10mm	10.033	9mm	6mm	2mm
CLM-8-BDP	15mm	8mm	7.997	12mm	12.035		7mm	
CLM-10-BDP	18mm	10mm	9.995	15mm	15.038	9mm		
CLM-12-BDP	22mm	12mm	11.995	18mm	18.038	11mm	10mm	

BUSHINGS (INCH)

PART NO.	A DIA	B DIA NOMINAL	B DIA ACTUAL	C DIA NOMINAL	C DIA ACTUAL	D	E
CL-B-8000	9/16	1/4	.2501	13/32	.4075	7/16	1/16
CL-B-9000	5/8	5/16	.3126	1/2	.5014		
CL-B-10000	3/4	3/8	.3751	5/8	.6265	1/2	1/8
CL-B-11000	7/8	1/2	.5001	3/4	.7515		
CL-B-12000	1-1/8	3/4	.7502	1	1.0015		
CL-B-13000	1-1/2	1	1.0002	1-3/8	1.3768	11/16	

BUSHINGS (METRIC)

PART NO.	A DIA	B DIA NOMINAL	B DIA ACTUAL	C DIA NOMINAL	C DIA ACTUAL	D	E
CLM-6-B	13mm	6mm	6.002	10mm	10.033	8mm	2mm
CLM-8-B	15mm	8mm	8.002	12mm	12.035		
CLM-10-B	18mm	10mm	10.002	15mm	15.038		
CLM-12-B	22mm	12mm	12.002	18mm	18.038	10mm	