

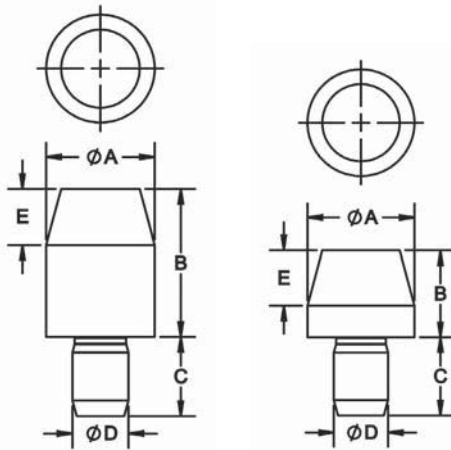
ROUND & DIAMOND LOCATING PINS DIN 6321

A2 TOOL STEEL, HEAT TREATED, BLACK OXIDE FINISH



**Round Locating Pins
DIN 6321
Type B
(Tall and Short)**

Round Locating Pins per DIN 6321 Type B have a ground head diameter for use as a hole locator or for side location. One Round Locating Pin and one Diamond Locating Pin are often used together to locate from two machined holes in a workpiece, or to align two pieces of a fixture, without binding. Round Locating Pins are also extremely useful as side locators. Head and shank diameters are concentric to within .0005" TIR. Available with head diameters from 6 to 25mm, each in a tall and a short version.



ROUND LOCATING PINS, TYPE B (METRIC)

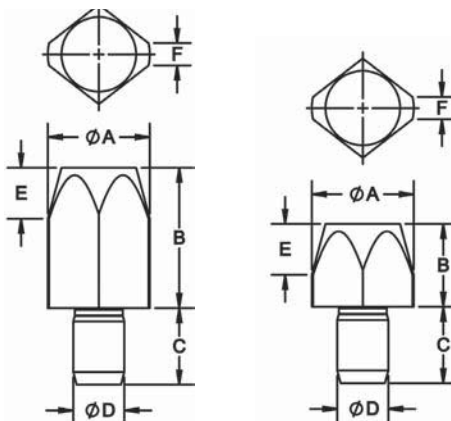
PART NO.	A DIA (mm) g6	VERSION	B (mm)	C (mm)	D DIA (mm) n6	E (mm)
CL-6321-6-7-B	6	Short	7	6	4	4
CL-6321-6-12-B		Tall	12			
CL-6321-8-10-B	8	Short	10	9	6	6
CL-6321-8-16-B		Tall	16			
CL-6321-10-10-B	10	Short	10	9	6	6
CL-6321-10-18-B		Tall	18			
CL-6321-12-10-B	12	Short	10	9	6	6
CL-6321-12-18-B		Tall	18			
CL-6321-16-13-B	16	Short	13	12	8	8
CL-6321-16-22-B		Tall	22			
CL-6321-20-15-B	20	Short	15	18	12	9
CL-6321-20-25-B		Tall	25			
CL-6321-25-15-B	25	Short	15	18	12	9
CL-6321-25-25-B		Tall	25			

6



**Diamond Locating Pins
DIN 6321
Type C
(Tall and Short)**

Diamond Locating Pins per DIN 6321 Type C also have a ground head diameter for use as a hole locator, but are relieved to locate in only 1 axis. One Round Locating Pin and one Diamond Locating Pin are often used together to locate from two machined holes in a workpiece, or to align two pieces of a fixture, without binding. Head and shank diameters are concentric to within .0005" TIR. Available with head diameters from 6 to 25mm, each in a tall and a short version.



DIAMOND LOCATING PINS, TYPE C (METRIC)

PART NO.	A DIA (mm) g6	VERSION	B (mm)	C (mm)	D DIA (mm) n6	E (mm)	F (mm)
CL-6321-6-7-C	6	Short	7	6	4	4	1
CL-6321-6-12-C		Tall	12				
CL-6321-8-10-C	8	Short	10	9	6	6	1.6
CL-6321-8-16-C		Tall	16				
CL-6321-10-10-C	10	Short	10	9	6	6	2.5
CL-6321-10-18-C		Tall	18				
CL-6321-12-10-C	12	Short	10	9	6	6	2.5
CL-6321-12-18-C		Tall	18				
CL-6321-16-13-C	16	Short	13	12	8	8	3.5
CL-6321-16-22-C		Tall	22				
CL-6321-20-15-C	20	Short	15	18	12	9	5
CL-6321-20-25-C		Tall	25				
CL-6321-25-15-C	25	Short	15	18	12	9	5
CL-6321-25-25-C		Tall	25				