

ROUND & DIAMOND LOCATING PINS

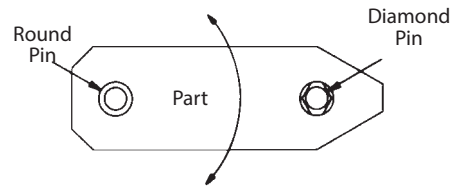
1144 STEEL, HEAT TREATED RC 48-55, BLACK OXIDE FINISH



Press-Fit Type Round Pin

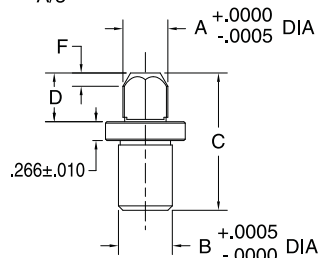
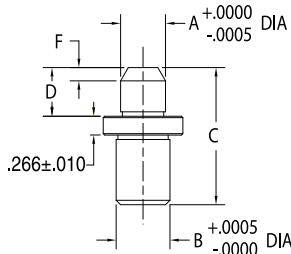
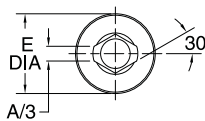
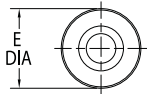


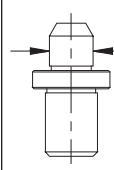
Press-Fit Type Diamond Pin



These precision locating pins are especially useful for workpiece location because of the wide selection of head diameters available to fit machined holes in the part. In addition to standard diameters, these pins are also quickly made to order in any special head diameter from .1150" to 1.0400" in .0001" increments. One Round Locating Pin and one Diamond Locating Pin is relieved to locate in only 1 axis. The type shown here, with a press-fit shank, is designed for permanent installation.

Round & Diamond Locating Pins are available in four standard shank diameters, each with a range of standard head diameters in 1/32" increments (2mm increments in metric), each available in either standard or undersize fit. Head and shank diameters are concentric to within .0005" TIR. Made in USA.





Special head diameters (A dimensions) are readily available in any of the four standard shank diameters:

- 5 = 5/16" shank (.1150-.3180 head dia)
- 8 = 1/2" shank (.2780-.5040 head dia)
- 12 = 3/4" shank (.4640-.7540 head dia)
- 16 = 1" shank (.7140-1.0040 head dia)

Example: For a press-fit round pin with a 1/2-inch shank and A=.4000 inches, order CL-8-RPT-4000.

PRESS-FIT TYPE (INCH)

ROUND PIN PART NO.	DIAMOND PIN PART NO.	B SHANK DIA	A HEAD DIA		C	D	E DIA	F
			NOMINAL	ACTUAL				
CL-123-RPT	CL-123-DPT	5/16	1/8	.1235	1-3/16	7/16	5/8	3/32
CL-124-RPT	CL-124-DPT			.1245				
CL-154-RPT	CL-154-DPT		5/32	.1548				
CL-155-RPT	CL-155-DPT			.1558				
CL-186-RPT	CL-186-DPT		3/16	.1860				
CL-187-RPT	CL-187-DPT			.1870				
CL-217-RPT	CL-217-DPT		7/32	.2173				
CL-218-RPT	CL-218-DPT			.2183				
CL-248-RPT	CL-248-DPT		1/4	.2485				
CL-249-RPT	CL-249-DPT			.2495				
CL-279-RPT	CL-279-DPT		9/32	.2798				
CL-280-RPT	CL-280-DPT			.2808				
CL-311-RPT	CL-311-DPT	5/16	.3110					
CL-312-RPT	CL-312-DPT		.3120					
CL-310-RPT	CL-310-DPT	1/2	5/16	.3105	1-1/2	1/2	7/8	1/8
CL-3115-RPT	CL-3115-DPT			.3115				
CL-341-RPT	CL-341-DPT		11/32	.3418				
CL-342-RPT	CL-342-DPT			.3428				
CL-373-RPT	CL-373-DPT		3/8	.3730				
CL-374-RPT	CL-374-DPT			.3740				
CL-404-RPT	CL-404-DPT		13/32	.4043				
CL-405-RPT	CL-405-DPT			.4053				
CL-435-RPT	CL-435-DPT		7/16	.4355				
CL-436-RPT	CL-436-DPT			.4365				
CL-466-RPT	CL-466-DPT		15/32	.4668				
CL-467-RPT	CL-467-DPT			.4678				
CL-498-RPT	CL-498-DPT	1/2	.4980					
CL-499-RPT	CL-499-DPT		.4990					

CONTINUED ON NEXT PAGE