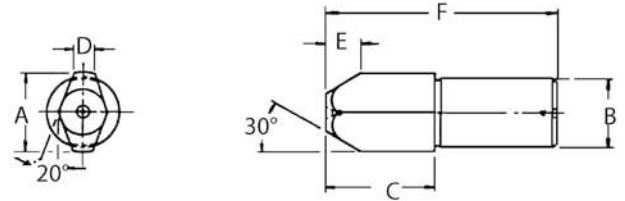


# ROUND & DIAMOND PINS

1144 STEEL, HEAT TREATED RC 48-55 BLACK OXIDE FINISH



## DIAMOND PINS (INCH)

PART NO.			A HEAD DIA				B SHANK DIA		C	D	E	F
X (Tight)	Y (Medium)	Z (Loose)	NOMINAL	X	Y	Z	NOMINAL	ACTUAL				
CL-1-DPX	CL-1-DPY	CL-1-DPZ	1/4	.2493/.2490	.2485/.2482	.2470/.2467	3/16	.1878/.1876	11/32	.062	3/32	3/4
CL-2-DPX	CL-2-DPY	CL-2-DPZ	5/16	.3118/.3115	.3110/.3107	.3095/.3092	1/4	.2503/.2501	13/32	.078		7/8
CL-3-DPX	CL-3-DPY	CL-3-DPZ	3/8	.3743/.3740	.3735/.3732	.3720/.3717	5/16	.3128/.3126	1/2	.093	1/8	1
CL-4-DPX	CL-4-DPY	CL-4-DPZ	7/16	.4368/.4365	.4360/.4357	.4345/.4342	3/8	.3753/.3751	19/32	.109	5/32	1-1/4
CL-5-DPX	CL-5-DPY	CL-5-DPZ	1/2	.4993/.4990	.4985/.4982	.4970/.4967	7/16	.4378/.4376	21/32	.125		1-3/8
CL-6-DPX	CL-6-DPY	CL-6-DPZ	9/16	.5615/.5610	.5595/.5590	.5575/.5570	1/2	.5003/.5001	3/4	.140	3/16	1-1/2
CL-7-DPX	CL-7-DPY	CL-7-DPZ	5/8	.6240/.6235	.6220/.6215	.6200/.6195	9/16	.5628/.5626	27/32	.156	7/32	1-3/4
CL-8-DPX	CL-8-DPY	CL-8-DPZ	11/16	.6865/.6860	.6845/.6840	.6825/.6820	5/8	.6253/.6251	29/32	.172		2
CL-9-DPX	CL-9-DPY	CL-9-DPZ	3/4	.7490/.7485	.7470/.7465	.7450/.7445	11/16	.6885/.6880	1	.187	1/4	2-1/8

## DIAMOND PINS (METRIC)

PART NO.	A HEAD DIA NOMINAL (mm)	A HEAD DIA ACTUAL (mm)	B SHANK DIA NOMINAL (mm)	B SHANK DIA ACTUAL (mm)	C (mm)	D (mm)	E (mm)	F (mm)
CLM-60-DPX	6	5.982 / 5.974	5	5.008 / 5.002	8.5	1.57	2.4	19
CLM-60-DPY	6	5.961 / 5.954	5	5.008 / 5.002	8.5	1.57	2.4	19
CLM-60-DPZ	6	5.923 / 5.916	5	5.008 / 5.002	8.5	1.57	2.4	19
CLM-80-DPX	8	7.983 / 7.976	6	6.008 / 6.002	10.5	1.98	2.4	22
CLM-80-DPY	8	7.963 / 7.955	6	6.008 / 6.002	10.5	1.98	2.4	22
CLM-80-DPZ	8	7.925 / 7.917	6	6.008 / 6.002	10.5	1.98	2.4	22
CLM-100-DPX	10	9.982 / 9.975	8	8.008 / 8.002	12.5	2.36	3.2	25.5
CLM-100-DPY	10	9.962 / 9.954	8	8.008 / 8.002	12.5	2.36	3.2	25.5
CLM-100-DPZ	10	9.924 / 9.916	8	8.008 / 8.002	12.5	2.36	3.2	25.5
CLM-120-DPX	12	11.981 / 11.974	10	10.008 / 10.002	16.5	3.18	4	35
CLM-120-DPY	12	11.961 / 11.953	10	10.008 / 10.002	16.5	3.18	4	35
CLM-120-DPZ	12	11.923 / 11.915	10	10.008 / 10.002	16.5	3.18	4	35
CLM-140-DPX	14	13.975 / 13.962	12	12.008 / 12.002	19	3.56	4.8	38
CLM-140-DPY	14	13.924 / 13.912	12	12.008 / 12.002	19	3.56	4.8	38
CLM-140-DPZ	14	13.873 / 13.861	12	12.008 / 12.002	19	3.56	4.8	38
CLM-160-DPX	16	15.974 / 15.961	14	14.008 / 14.002	21.5	3.96	5.5	44.5
CLM-160-DPY	16	15.923 / 15.910	14	14.008 / 14.002	21.5	3.96	5.5	44.5
CLM-160-DPZ	16	15.872 / 15.860	14	14.008 / 14.002	21.5	3.96	5.5	44.5
CLM-180-DPX	18	17.976 / 17.963	16	16.008 / 16.002	23	4.37	5.5	51
CLM-180-DPY	18	17.925 / 17.912	16	16.008 / 16.002	23	4.37	5.5	51
CLM-180-DPZ	18	17.874 / 17.861	16	16.008 / 16.002	23	4.37	5.5	51
CLM-200-DPX	20	19.974 / 19.962	18	18.026 / 18.012	28	5.16	7	57
CLM-200-DPY	20	19.924 / 19.911	18	18.026 / 18.012	28	5.16	7	57
CLM-200-DPZ	20	19.873 / 19.860	18	18.026 / 18.012	28	5.16	7	57