

ROUND & DIAMOND PINS

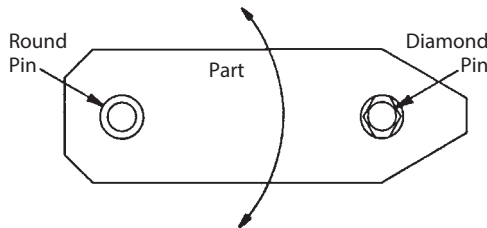
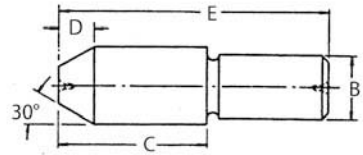
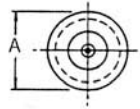
1144 STEEL, HEAT TREATED RC 50-55 BLACK OXIDE FINISH



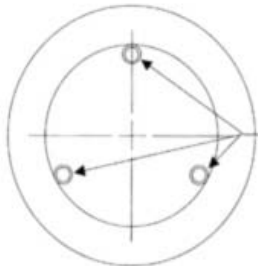
Round Pin



Diamond Pin



These precision locating pins have a chamfered tip for easy part loading, and a shoulder to resist downward forces – important advantages over standard dowel pins. One Round Pin and one Diamond Pin are often used together to locate from two machined holes in a workpiece, or to align two pieces of a fixture, without binding. Diamond Pins are relieved, to locate in only 1 axis. Round Pins are also extremely useful as side locators. Head and shank diameters are concentric to within .0005" TIR. Available with head diameters from 1/4 to 1" (6 to 20mm in metric).



LOCATING ON A LARGE INSIDE DIAMETER USING THREE ROUND PINS SPACED 120° APART

A series of locating pins can be used to locate a large diameter, instead of making a custom locating plug. In this example, three Round Pins are positioned 120° apart around the internal diameter of a large bored hole.

ROUND PINS (INCH)

PART NO.	A HEAD DIA		B SHANK DIA		C	D	E
	NOMINAL	ACTUAL	NOMINAL	ACTUAL			
CL-1-RP	1/4	.2495/.2492	3/16	.1878/.1876	11/32	3/32	3/4
CL-2-RP	5/16	.3120/.3117	1/4	.2503/.2501	13/32		7/8
CL-3-RP	3/8	.3745/.3742	5/16	.3128/.3126	1/2	1/8	1
CL-4-RP	7/16	.4370/.4367	3/8	.3753/.3751	19/32	5/32	1-1/4
CL-5-RP	1/2	.4995/.4992	7/16	.4378/.4376	21/32		1-3/8
CL-6-RP	9/16	.5620/.5617	1/2	.5003/.5001	3/4	3/16	1-1/2
CL-7-RP	5/8	.6240/.6237	9/16	.5628/.5626	27/32	7/32	1-3/4
CL-8-RP	11/16	.6865/.6862	5/8	.6253/.6251	29/32		2
CL-9-RP	3/4	.7490/.7487	11/16	.6885/.6880	1	1/4	2-1/8
CL-10-RP	13/16	.8115/.8112	3/4	.7510/.7505	1-3/32	9/32	2-1/4
CL-11-RP	7/8	.8740/.8737	13/16	.8135/.8130	1-5/32		2-1/2
CL-12-RP	15/16	.9365/.9362	7/8	.8760/.8755	1-1/4	5/16	2-3/4
CL-13-RP	1	.9985/.9980	15/16	.9385/.9380	1-5/16		2-7/8

ROUND PINS (METRIC)

PART NO.	A HEAD DIA NOMINAL (mm)	A HEAD DIA ACTUAL (mm)	B SHANK DIA NOMINAL (mm)	B SHANK DIA ACTUAL (mm)	C (mm)	D (mm)	E (mm)
CLM-60-RP	6	5.987 / 5.979	5	5.008 / 5.002	8.5	2.4	19
CLM-80-RP	8	7.987 / 7.979	6	6.008 / 6.002	10.5	2.4	22
CLM-100-RP	10	9.987 / 9.979	8	8.008 / 8.002	12.5	3.2	25.5
CLM-120-RP	12	11.987 / 11.979	10	10.008 / 10.002	16.5	4	35
CLM-140-RP	14	13.987 / 13.979	12	12.008 / 12.002	19	4.8	38
CLM-160-RP	16	15.975 / 15.967	14	14.008 / 14.002	21.5	5.5	44.5
CLM-180-RP	18	17.975 / 17.967	16	16.008 / 16.002	23	5.5	51
CLM-200-RP	20	19.975 / 19.967	18	18.026 / 18.012	28	7	57