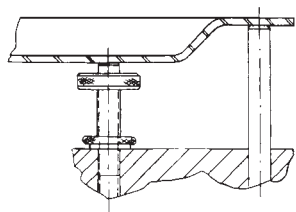


KNURLED SCREW JACKS

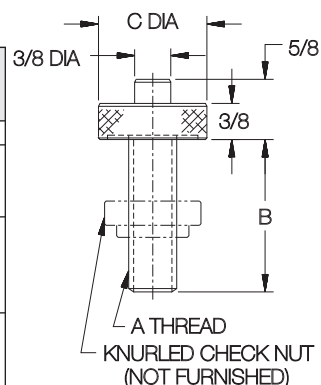
1215 STEEL, CASE HARDENED, BLACK OXIDE FINISH



Knurled head allows quick, easy, finger adjustment. Order Knurled Check Nut separately.

INCH

PART NO.	A	B	C DIA	KNURLED CHECK NUT (NOT FURNISHED)
CL-0-KSJ	5/16-18	1-5/8	7/8	CL-51618-TSJN
CL-1-KSJ		1-1/4		
CL-2-KSJ	3/8-16	1-5/8	1-1/8	CL-3816-TSJN
CL-3-KSJ		2		
CL-4-KSJ		1-1/4		
CL-5-KSJ	1/2-13	1-5/8	1-1/8	CL-1213-TSJN
CL-6-KSJ		2		
CL-7-KSJ		2-1/2		
CL-8-KSJ		1-5/8		
CL-9-KSJ	5/8-11	2	1-3/8	CL-5811-TSJN
CL-10-KSJ		2-1/2		

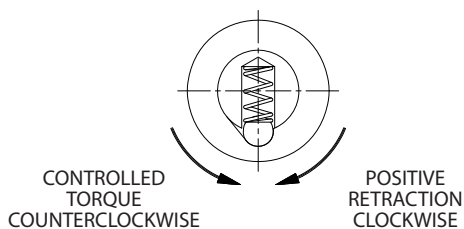


TORQUE SCREW JACKS

1215 STEEL, BLACK OXIDE FINISH

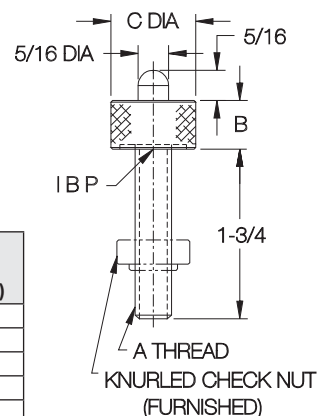


When indicated end force is reached, the knurled head disengages, eliminating the possibility of exerting excessive pressure on thinwall pieces. Furnished with Knurled Check Nut.



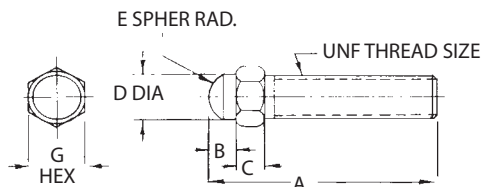
INCH

PART NO.	A	END FORCE (LBS)	B	C DIA	KNURLED CHECK NUT (FURNISHED)
CL-4-TSJ	1/4-20	12-14			CL-1420-TSJN
CL-4A-TSJ	5/16-18	14-16	7/16	7/8	CL-51618-TSJN
CL-5-TSJ	3/8-16	16-18			CL-3816-TSJN
CL-6-TSJ	1/2-13	18-20			CL-1213-TSJN
CL-8-TSJ	5/8-11	20-22	1/2	1-1/8	CL-5811-TSJN



ADJUSTABLE LOCATING BUTTONS

1215 STEEL, CASE HARDENED, BLACK OXIDE FINISH



A support screw with fine threads for precise adjustment. (Metric threads and CL-LB-2A are coarse).

INCH

PART NO.	THREAD SIZE	A	B	C	D DIA	E	G
CL-LB-1	#10-32	1	1/8	1/8	3/16	1/8	1/4
CL-LB-2	1/4-28	1-1/2	3/16	3/16	1/4	3/16	3/8
CL-LB-2A	1/4-20						
CL-LB-7	5/16-24	1-3/4	1/4	1/4	5/16	3/16	7/16
CL-LB-3	3/8-24	2			3/8	1/4	1/2
CL-LB-4	1/2-20	2-1/2	5/16	5/16	1/2	5/16	5/8
CL-LB-5	5/8-18	3	3/8	3/8	5/8	3/8	3/4
CL-LB-6	3/4-16	3-1/2	7/16	7/16	3/4	7/16	7/8

METRIC

CLM-5-LB	M5	.98	.12	.12	.20	.20	8mm
CLM-6-LB	M6	1.57	.20	.20	.24	.20	10mm
CLM-8-LB	M8	1.77	.24	.24	.31	.20	13mm
CLM-10-LB	M10	1.97			.39	.24	17mm
CLM-12-LB	M12	2.56	.31	.31	.47	.31	19mm
CLM-16-LB	M16	2.95	.39	.39	.63	.39	24mm