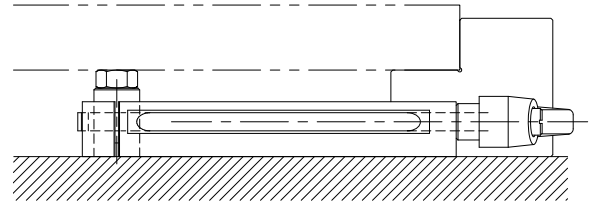


MANUAL WORK SUPPORTS

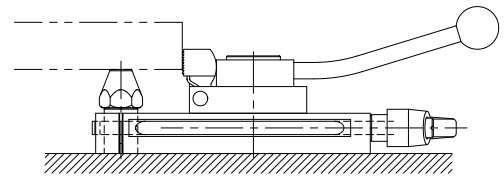
BODY & PLUNGER: CARBON STEEL, CASE HARDENED, BLACK OXIDE FINISH
HANDLE: ZINC DIE CASTING, ENAMEL PAINT



Spring-extended work support with an extremely low profile. Ideal for supporting in hard-to-reach places, because the handle can be positioned for convenient access. Turning the handle counterclockwise unlocks the plunger, allowing the plunger to float. Turning the handle clockwise locks the plunger. If desired, the plunger can be locked in retracted position before loading, for easier loading of light parts. The zinc die-cast Adjustable Handle can be reset to any angle for best leverage.



Low profile allows reaching far underneath low workpieces.



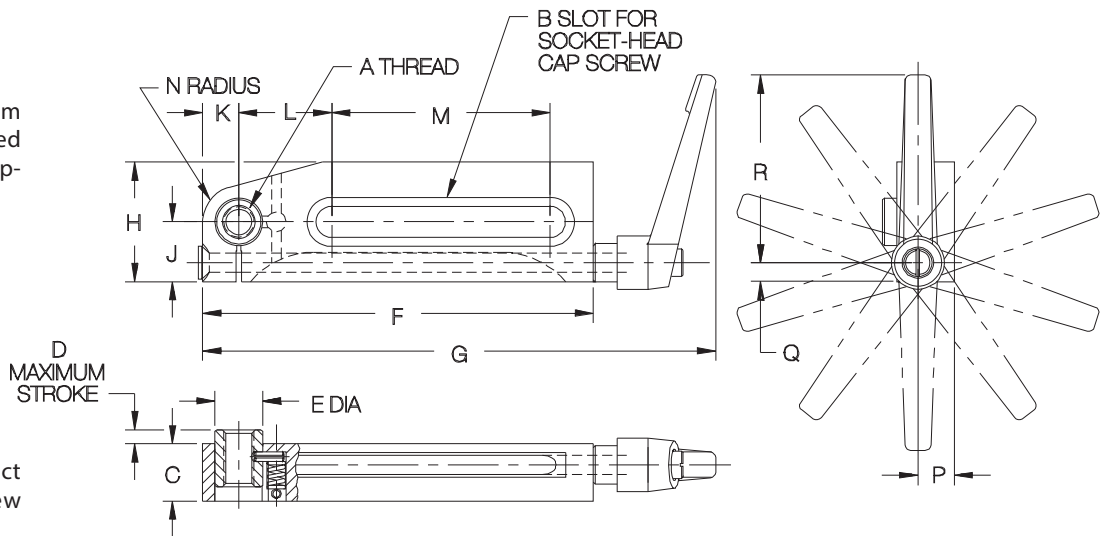
Mounting slot allows stacking other components, such as this Cam Edge Clamp, on top of the support.



Screw Rest Pads available from 1/4" to 2" tall, are ideal fixed contact bolts to use in the support plunger.



INFO+: For adjustable contact screws, see Knurled Screw Jacks.



INCH

PART NO.	A	B	C	D	E DIA	F	G	H	J	K	L	M	N	P	Q	R	LOAD CAPACITY (LBS)
CL-MF25-5701	5/16-18	5/16-18 or M8	.708	.118	.591	3-3/8	5-1/16	1-3/16	25/32	13/32	1-1/16	1-13/32	13/32	.433	9/32	2-9/16	110
CL-MF40-5701	1/2-13	1/2-13 or M12	.945	.236	.787	6-1/2	8-9/16	2	1	19/32	1-17/32	3-9/16	19/32	.551	5/16	3-1/8	550
CL-MF50-5702	5/8-11	5/8-11 or M16	1.339	.433	1.102	7-1/2	10-7/16	2-3/8	1-7/16	13/16	1-3/4	4-1/16	13/16	.846	1/2	4-5/16	1100

METRIC

PART NO.	A THREAD	THREAD PITCH (mm)	B MOUNTING SCREW	C (mm)	D (mm)	E DIA (mm)	F (mm)	G (mm)	H (mm)	J (mm)	K (mm)	L (mm)	M (mm)	N (mm)	P (mm)	Q (mm)	R (mm)	LOAD CAPACITY (kg)
CL-MF08-5701	M8	1.25	5/16" or M8	18	3	15	85.5	129	30	20	10.5	27	35.5	10.5	11	7	65	50
CL-MF12-5701	M12	1.75	1/2" or M12	24	6	20	165	217	51	25.5	15	39	90.5	15	14	8	79.5	250
CL-MF16-5702	M16	2	5/8" or M16	34	11	28	190.5	265	60.5	36.5	20.5	44.5	103	20.5	21.5	12.5	109.5	500