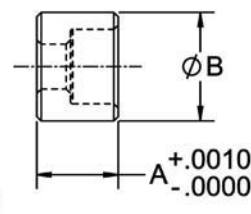
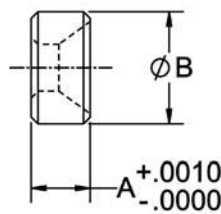


JIG REST BUTTONS

1215 STEEL, CASE HARDENED, BLACK OXIDE FINISH



Precision height locator with a counterbored hole for mounting with a Socket-Head Cap Screw (not furnished). Jig Rest Buttons are extremely useful as supports, side locator pads, and jig feet.

*APPLIES TO CL-12-JRB & CL-24-JRB

INCH

PART NO.	B DIA	A		C
		NOMINAL	ACTUAL	
CL-24-JRB	1/2	1/8	.1250	#8 Flat Head*
CL-00-JRB		3/8	.3750	#10
CL-0-JRB		1/2	.5000	
CL-12-JRB	5/8	1/4	.2500	#10 Flat Head*
CL-13-JRB		3/8	.3750	1/4
CL-1-JRB		1/2	.5000	
CL-14-JRB		5/8	.6250	
CL-2-JRB		3/4	.7500	
CL-16-JRB		1	1.0000	
CL-17-JRB	7/8	3/8	.3750	
CL-18-JRB		1/2	.5000	5/16
CL-3-JRB		5/8	.6250	
CL-19-JRB	3/4	.7500		
CL-20-JRB	1-1/4	1	1.0000	3/8
CL-25-JRB		1/2	.5000	
CL-21-JRB		3/4	.7500	
CL-6-JRB		1	1.0000	
CL-7-JRB		1-1/2	1.5000	
CL-8-JRB	2	2.0000		

* Countersunk for flat-head screw these sizes only.

METRIC

PART NO.	B DIA	A		C
		NOMINAL	ACTUAL	
CLM-1-JRB	.63	10mm	.3937	M5
CLM-2A-JRB		15mm	.5906	
CLM-4-JRB	.79	10mm	.3937	M6
CLM-6A-JRB		15mm	.5906	
CLM-7A-JRB		20mm	.7874	
CLM-8-JRB		25mm	.9843	
CLM-11A-JRB	.98	15mm	.5906	M8
CLM-12A-JRB		20mm	.7874	
CLM-13-JRB		25mm	.9843	
CLM-14A-JRB	1.26	20mm	.7874	M10
CLM-15-JRB		25mm	.9843	
CLM-16A-JRB		30mm	1.1811	
CLM-17A-JRB		50mm	1.9685	

STAINLESS STEEL (INCH)

PART NO.	A DIA		B DIA	C MOUNTING SCREW
	NOMINAL	ACTUAL		
CL-1-JRB-S	1/2	.5000	5/8	1/4
CL-18-JRB-S	1/2	.5000	7/8	5/16
CL-25-JRB-S	1/2	.5000	1-1/4	3/8

STAINLESS STEEL (METRIC)

PART NO.	A (mm)	B DIA (mm)	C MOUNTING SCREW
CLM-4-JRB-S	10	20	M6
CLM-13-JRB-S	25	25	M8