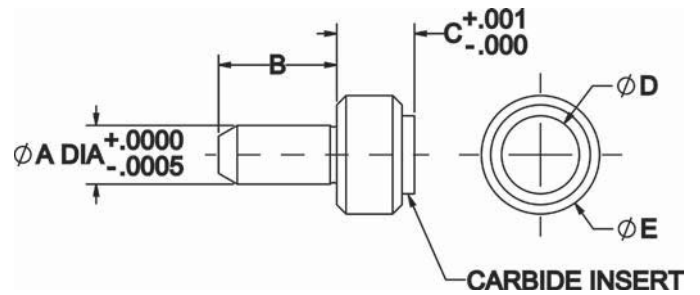


CARBIDE-TIPPED REST BUTTONS

BODY: 1144 STEEL, HEAT TREATED RC 40-45, BLACK OXIDE FINISH
PAD: CARBIDE



Carbide-Tipped Rest Buttons are available in many of the same diameters and heights as our standard Rest Buttons on the previous page, so they can be used as direct replacements where additional wear resistance is desired. These rest buttons feature a thick embedded carbide pad, finish machined to a precision height. Like a standard Rest Button, these locators have a close-tolerance shank for installation in a reamed hole.

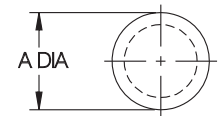
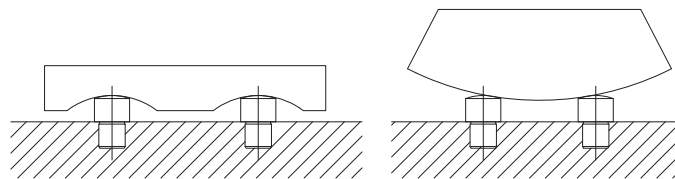
STEEL (INCH)

| PART NO. | A DIA | | B | C | | D DIA | E DIA |
|------------|---------|--------|-----|---------|--------|-------|-------|
| | NOMINAL | ACTUAL | | NOMINAL | ACTUAL | | |
| CL-12-CTRB | 3/16 | .1885 | 3/8 | 1/4 | .2500 | 1/4 | 3/8 |
| CL-14-CTRB | | | | 1/2 | .5000 | | |
| CL-3-CTRB | 1/4 | .2510 | 1/2 | 3/8 | .3750 | 3/8 | 1/2 |
| CL-5-CTRB | 3/8 | .3760 | 5/8 | 1/4 | .2500 | 1/2 | 5/8 |
| CL-6-CTRB | | | | 3/8 | .3750 | | |
| CL-7-CTRB | | | | 5/8 | .6250 | | |
| CL-15-CTRB | 1/2 | .5010 | 5/8 | 3/8 | .3750 | 3/4 | 7/8 |
| CL-9-CTRB | | | | 1/2 | .5000 | | |
| CL-19-CTRB | 3/4 | .7515 | 7/8 | 1/2 | .5000 | 1 | 1-1/4 |

5

SPHERICAL RADIUS LOCATOR BUTTONS

1144 STEEL, HEAT TREATED RC 40-45, BLACK OXIDE FINISH



Precision height locator with a spherical-radius head to minimize workpiece contact area. Close-tolerance shank allows press-fit installation in a reamed hole. Spherical-Radius Locator Buttons are extremely useful as supports, side locator pads, and jig feet.

INCH

| PART NO. | B DIA | A DIA | C | D | E |
|----------|-------|-------|-------|------|-----|
| CL-1-SLB | 3/16 | 5/16 | .1250 | 3/8 | 1/2 |
| CL-2-SLB | 1/4 | 3/8 | .1875 | 1/2 | 5/8 |
| CL-3-SLB | 3/8 | 1/2 | .1875 | 9/16 | 3/4 |
| CL-4-SLB | | | .2500 | 5/8 | |
| CL-5-SLB | | | .3750 | 3/4 | |
| CL-6-SLB | | | .5000 | 7/8 | |

