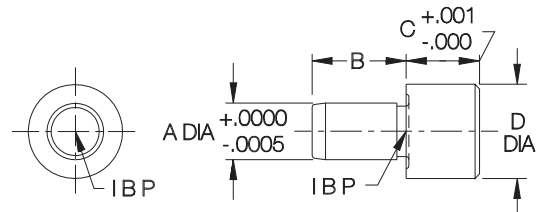
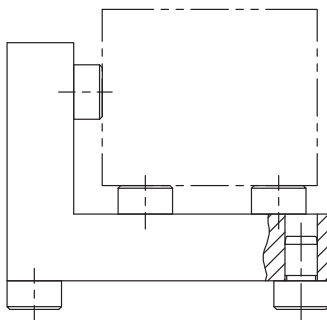


REST BUTTONS

STEEL: 1144, HEAT TREATED RC 40-45, BLACK OXIDE FINISH
 STAINLESS STEEL: 300-SERIES



Precision height locator with a close-tolerance shank for installation in a reamed hole. Rest Buttons are extremely useful as supports, side locator pads, and jig feet. Available in steel, stainless steel, or steel with a carbide pad on page 207.



STEEL (INCH)

PART NO.	A DIA		B	C		D DIA
	NOMINAL	ACTUAL		NOMINAL	ACTUAL	
CL-1-RB-N	1/4	.2510	1/2	1/2	.5000	1/2
CL-2-RB-N				1/4	.2500	
CL-3-RB-N				3/8	.3750	
CL-4-RB-N	3/8	.3760	5/8	1/2	.5000	5/8
CL-5-RB-N				1/4	.2500	
CL-6-RB-N				3/8	.3750	
CL-7-RB-N				5/8	.6250	
CL-8-RB-N				3/4	.7500	
CL-9-RB-N	1/2	.5010	1/2	.5000	7/8	
CL-10-RB-N	5/8	.6260	3/4	1/2	.5000	1
CL-11-RB-N	3/4	.7515	7/8	5/8	.6250	1-1/4
CL-12-RB-N	3/16	.1885	3/8	1/4	.2500	3/8
CL-13-RB-N	3/16			3/8	.3750	3/8
CL-14-RB-N	3/16			1/2	.5000	3/8
CL-15-RB-N	1/2	.5010	5/8	3/8	.3750	7/8
CL-16-RB-N	1/2	5/8		.6250	7/8	
CL-17-RB-N	5/8	.6260	3/4	3/8	.3750	1
CL-18-RB-N	5/8			3/4	.7500	1
CL-19-RB-N	3/4	.7515	7/8	1/2	.5000	1-1/4

STAINLESS STEEL (INCH)

PART NO.	A DIA		B	C		D DIA
	NOMINAL	ACTUAL		NOMINAL	ACTUAL	
CL-26432	3/16	.1885	1/4	1/4	.2500	3/8
CL-26433				3/8	.3750	
CL-26434				1/2	.5000	
CL-26542	1/4	.2510	5/16	1/4	.2500	1/2
CL-26646	5/16	.3135	5/16	3/4	.7500	1/2

STEEL (METRIC)

PART NO.	A DIA NOMINAL (mm)	A DIA ACTUAL (mm)	B (mm)	C (mm)	D DIA (mm)
CLM-605-RB	6	6.025	8	5	10
CLM-610-RB				10	
CLM-805-RB	8	8.025	10	5	16
CLM-810-RB				10	
CLM-815-RB				15	
CLM-820-RB				20	
CLM-1010-RB				10	
CLM-1015-RB	10	10.025	12	15	20
CLM-1020-RB				20	