

# GRIPPER SWIVEL PADS

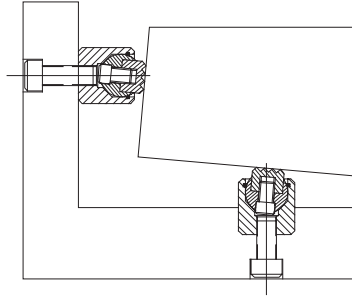
BODY: STEEL, CASE HARDENED, BLACK OXIDE FINISH

O-RING: RUBBER

SERRATED SWIVEL BALL: HIGH-SPEED TOOL STEEL, BLACK OXIDE FINISH

FLAT SWIVEL BALL: STEEL, HARDENED, BLACK OXIDE FINISH

FLAT DELRIN® SWIVEL BALL: WHITE DELRIN® 500



Gripper Swivel Pads can be surface mounted or installed in a counterbored hole.



**Hardened Tool Steel (Serrated)**



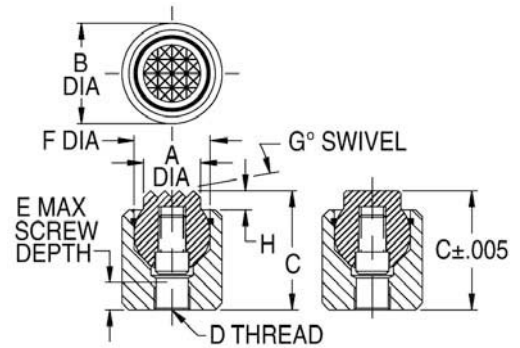
**Hardened Steel (Flat)**



**Delrin® (Flat)**

## Mini sizes

Mini-size rest pad with a built-in swivel ball held by a retaining ring. Choose from the three gripper types shown, serrated or flat. The gripper face is machined directly on the swivel ball. A positive stop prevents the ball from swiveling too far. Gripper Swivel Pads can be surface mounted or installed in a counterbored hole. Available in the following body diameters from 3/8 to 5/8" (10 to 17mm in metric).



## MINI — COMPLETE ASSEMBLY (INCH)

PART NO. — COMPLETE			A DIA	B DIA	C	D	E	F BALL DIA	G	H	SERRATIONS	
HARDENED TOOL STEEL (SERRATED)	HARDENED STEEL (FLAT)	DELRIN® (FLAT)									Super Fine	Extra Fine
CL-3-GSPS	CL-3-GSPF	CL-3-GSPN	5/32	3/8	3/8	#4-40	1/4	3/16	14°	.062	Super Fine	.062x90°
CL-4-GSPS	CL-4-GSPF	CL-4-GSPN	1/4	7/16	7/16	#8-32	5/32	9/32			Extra Fine	.094x90°
CL-5-GSPS	CL-5-GSPF	CL-5-GSPN	5/16	1/2	9/16	#10-32	5/32	3/8			17°	.125
CL-6-GSPS	CL-6-GSPF	CL-6-GSPN	3/8	5/8	15/16	1/4-28	1/4	1/2				

## MINI — COMPLETE ASSEMBLY (METRIC)

PART NO.	A DIA (mm)	B DIA (mm)	C (mm)	D THREAD	THREAD PITCH (mm)	E (mm)	F BALL DIA (mm)	G	H (mm)	SERRATIONS	SERRATION DIMENSIONS (mm)	LOAD CAPACITY (kg)
CLM-6-GSPS	6	10	12	M4	.7	3.5	7	14°	1.5	SUPER FINE	1.6x90°	1100
CLM-8-GSPS	8.5	13	16	M5	.8	6.5	10	12°		EXTRA FINE	2.4x90°	2000
CLM-10-GSPS	10	17	19.5	M6	1	7	13	21°		EXTRA FINE	2.4x90°	2800