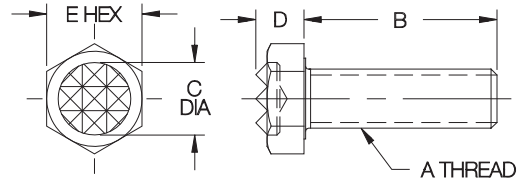


GRIPPER CONTACT BOLTS

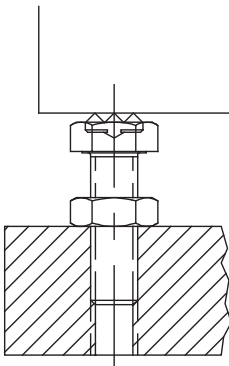
STEEL, CASE HARDENED, BLACK OXIDE FINISH, WITH BRAZED CARBIDE GRIPPER



**Carbide Tipped
(Serrated)**



Fully threaded contact bolt with a carbide-tipped gripper head. Can be used as an adjustable support, or as a contact bolt in a clamp. Available in thread sizes from 1/4-20 to 5/8-11 (M6 to M16 in metric) each in a choice of lengths.



INCH

PART NO.	A	B	C DIA	D	E	SERRATIONS	
CL-405-GCB	1/4-20	1/2	5/16	13/64	7/16	Extra Fine	.094x90°
CL-410-GCB		1					
CL-505-GCB	5/16-18	1/2	3/8	1/4	1/2	Fine	.125x90°
CL-510-GCB		1					
CL-515-GCB		1-1/2					
CL-605-GCB	3/8-16	1/2	1/2	9/32	9/16	Fine	.125x90°
CL-610-GCB		1					
CL-615-GCB		1-1/2					
CL-810-GCB	1/2-13	1	5/8	23/64	3/4	Fine	.125x90°
CL-815-GCB		1-1/2					
CL-1010-GCB	5/8-11	1	3/4	7/16	15/16	Fine	.125x90°
CL-1020-GCB		2					

METRIC

PART NO.	A THREAD	THREAD PITCH (mm)	B (mm)	C DIA (mm)	D (mm)	E (mm)	SERRATIONS	SERRATION DIMENSIONS (mm)
CLM-612-GCB	M6	1	12	8	5	10	EXTRA FINE	2.4x90°
CLM-625-GCB	M6	1	25	8	5	10	EXTRA FINE	2.4x90°
CLM-812-GCB	M8	1.25	12	9.5	6.4	13	FINE	3.2x90°
CLM-825-GCB	M8	1.25	25	9.5	6.4	13	FINE	3.2x90°
CLM-835-GCB	M8	1.25	35	9.5	6.4	13	FINE	3.2x90°
CLM-1012-GCB	M10	1.5	12	12.5	7.5	17	FINE	3.2x90°
CLM-1025-GCB	M10	1.5	25	12.5	7.5	17	FINE	3.2x90°
CLM-1040-GCB	M10	1.5	40	12.5	7.5	17	FINE	3.2x90°
CLM-1225-GCB	M12	1.75	25	16	8.7	19	FINE	3.2x90°
CLM-1240-GCB	M12	1.75	40	16	8.7	19	FINE	3.2x90°
CLM-1635-GCB	M16	2	35	19	11	24	FINE	3.2x90°
CLM-1650-GCB	M16	2	50	19	11	24	FINE	3.2x90°