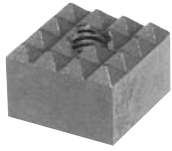


# SQUARE GRIPPERS

HARDENED TOOL STEEL: M-2 TOOL STEEL, HEAT TREATED RC 60-62, BLACK OXIDE FINISH  
 CARBIDE TIPPED: ALLOY STEEL, HEAT TREATED, WITH BRAZED CARBIDE INSERT, BLACK OXIDE FINISH  
 SOLID CARBIDE: CARBIDE WITH STEEL THREAD INSERT



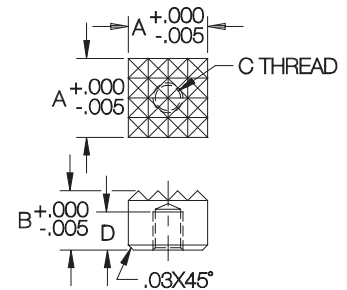
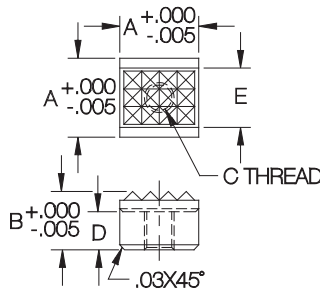
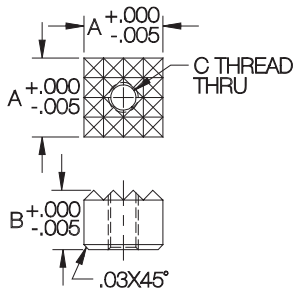
**Hardened  
Tool Steel  
(Serrated)**



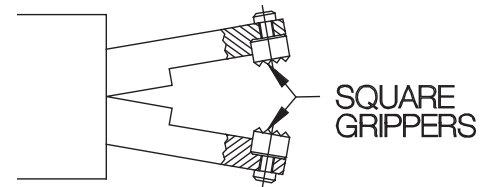
**Carbide  
Tipped  
(Serrated)**



**Solid  
Carbide  
(Serrated)**



Square Grippers are similar to Round Grippers, but their shape is useful when positive resistance to rotation is required (they can be mounted against a step to prevent rotation). These serrated grippers are hard, replaceable inserts that provide additional holding force and/or wear resistance when installed in a fixture. They are designed to slightly penetrate the workpiece to significantly increase gripping force, rather than relying on static friction alone. The hardened-tool-steel version is the most economical and impact resistant. The carbide-tipped version is still economical and impact resistant while providing extra durability. The solid-carbide version is the most durable.



Square Grippers can be mounted against a step for positive resistance to rotation.

## INCH

PART NO. HARDENED TOOL STEEL (SERRATED)	PART NO. CARBIDE TIPPED (SERRATED)	PART NO. SOLID CARBIDE (SERRATED)	A	B	C	SERRATIONS	
CL-6-SG	—	—	3/8	3/8	#10-32	XFine	.094x90°
CL-8-SG	CL-8-SGT	CL-8-SGC	1/2			Fine	.125x90°
CL-12-SG	—	—	3/4		1/4-28		
CL-16-SG	—	—	1				

## METRIC

PART NO.	PART NO.	PART NO.	A	B	C	SERRATIONS	
CLM-10-SG	—	—	10mm	10mm	M5	XFine	2.4x90°
CLM-12-SG	CLM-12-SGT	—	12mm			Fine	3.2x90°
CLM-20-SG	—	—	20mm		M6		
CLM-25-SG	—	—	25mm				