

ROUND GRIPPERS

CARBIDE TIPPED: ALLOY STEEL, HEAT TREATED, WITH BRAZED CARBIDE INSERT, BLACK OXIDE FINISH

HARDENED STEEL: 8620 STEEL, CASE HARDENED, BLACK OXIDE FINISH

HARDENED STAINLESS STEEL: 17-4 STAINLESS STEEL, HEAT TREATED RC 43-46

DELTRIN®: WHITE DELTRIN® 500



Carbide Tipped (Flat)



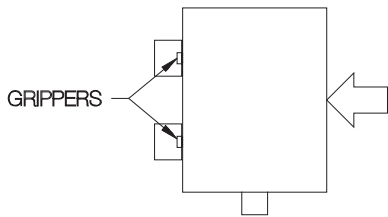
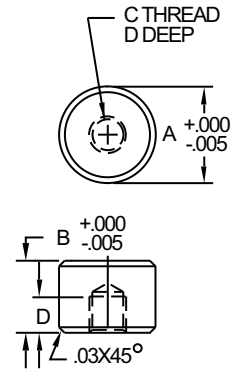
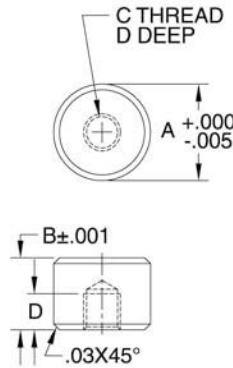
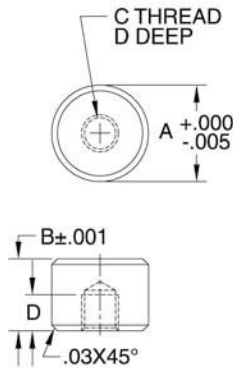
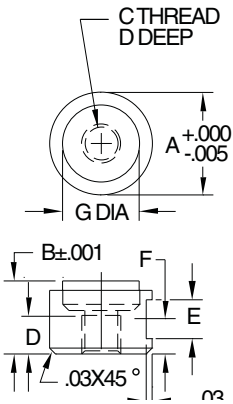
Hardened Steel (Flat)



Hardened Stainless Steel (Flat)



Delrin® (Flat)



Serrated grippers recessed into a fixture's locating surfaces dramatically increase resistance to movement by embedding themselves in the workpiece.

Flat grippers can be used to provide additional wear resistance, or as precision rest pads. The carbide-tipped version is the most durable. The hardened-steel version is the most economical and impact resistant. The hardened-stainless-steel version provides high strength and excellent corrosion resistance. The Delrin® version helps avoid marring finished workpieces.

INCH

PART NO. CARBIDE TIPPED (FLAT)	PART NO. HARDENED STEEL (FLAT)	PART NO. HARDENED STAINLESS (FLAT)	PART NO. DELRIN® (FLAT)	A DIA	B	C	D	E	F	G DIA
CL-6-RGFT	CL-6-RGF	CL-6-RGF-S	CL-6-RGFN	3/8	3/8	#10-32	3/16	3/16	11/64	5/16
CL-8-RGFT	CL-8-RGF	CL-8-RGF-S	CL-8-RGFN	1/2		3/8				3/8
CL-10-RGFT	CL-10-RGF	CL-10-RGF-S	CL-10-RGFN	5/8	1	1/4-28	3/16	3/16	11/64	1/2
CL-12-RGFT	CL-12-RGF	CL-12-RGF-S	CL-12-RGFN	3/4						5/8
CL-16-RGFT	CL-16-RGF	CL-16-RGF-S	CL-16-RGFN	1						3/4

METRIC

PART NO.	A DIA (mm)	B (mm)	C THREAD	THREAD PITCH (mm)	D (mm)
CLM-10-RGF	10	10	M5	.8	5
CLM-12-RGF	12	10	M5	.8	5
CLM-16-RGF	16	10	M6	1	5
CLM-20-RGF	20	10	M6	1	5
CLM-25-RGF	25	10	M6	1	5

Round Grippers can be fastened from behind with a Socket-Head Cap Screw. Some gripper types also have an O.D. locking flat for fastening with a set screw.