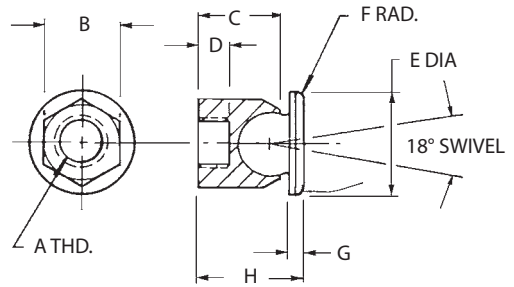
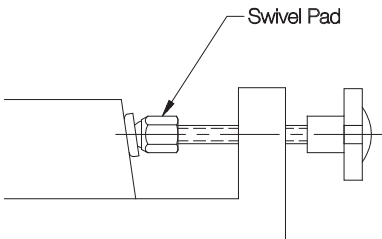


SWIVEL PADS

PAD: 1215 STEEL, CASE HARDENED, BLACK OXIDE FINISH OR DELRIN®
 NUT: 1215 STEEL, BLACK OXIDE FINISH



Heavy-duty swivel foot pivots to contact sloped surfaces evenly. Large ball provides high load capacity with a 18° total swivel angle. Choice of steel or Delrin® pad.



INCH

PART NO. STEEL PAD	PART NO. DELRIN® PAD	A	B	C	D	E DIA	F	G	H
CL-1-SPA	CL-1-SPAN	1/4-20	1/2	.50	.23	5/8	.06	.10	.67
CL-2-SPA	CL-2-SPAN	5/16-18	9/16	.58	.27	3/4			.75
CL-3-SPA	CL-3-SPAN	3/8-16	5/8	.71	.29	7/8			.91
CL-4-SPA	CL-4-SPAN	1/2-13	3/4	.81	.31	1	.09	.15	1.05
CL-5-SPA	CL-5-SPAN	5/8-11	7/8	1.00	.35	1-1/8			1.25
CL-6-SPA	—	3/4-10	1-1/16	1.12		1-1/4			1.38
CL-7-SPA	—	1-8	1-3/8	1.50		1-5/8			1.82

METRIC

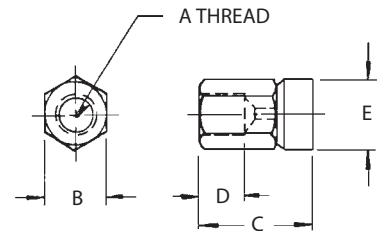
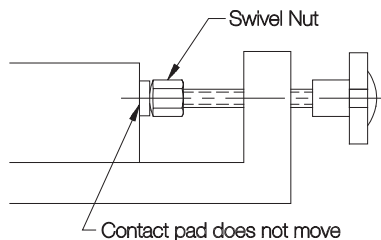
PART NO.	A THREAD	THREAD PITCH (mm)	B (mm)	C (mm)	D (mm)	E DIA (mm)	F (mm)	G (mm)	H (mm)
CLM-6-SPA	M6	1	10	14	6	12.5	1	2	17
CLM-8-SPA	M8	1.25	13	14.5	5.5	19	1.5	2.5	19
CLM-10-SPA	M10	1.5	17	18	7.5	22	1.5	3	23
CLM-12-SPA	M12	1.75	19	20.5	8	25.5	2.5	4	26.5
CLM-16-SPA	M16	2	24	25.5	9	28.5	2.5	4	32
CLM-20-SPA	M20	2.5	30	28.5	9	32	2.5	4	35

SWIVEL NUTS

NUT: 1215 STEEL, CASE HARDENED, BLACK OXIDE FINISH
 PAD: 1215 STEEL, BLACK OXIDE FINISH



Nut turns freely without pivoting while pad remains stationary, to avoid moving or marring the workpiece.



INCH

PART NO.	A	B	C	D	E DIA
CL-4-SN	1/4-20	5/16	7/16	3/16	3/8
CL-5-SN	5/16-18	3/8	17/32	1/4	7/16
CL-6-SN	3/8-16	7/16	17/32	17/64	1/2
CL-8-SN	1/2-13	5/8	21/32	3/8	11/16
CL-10-SN	5/8-11	3/4	1	7/16	7/8
CL-12-SN	3/4-10	7/8	1	1/2	1

METRIC

CLM-6-SN	M6	8mm	.43	3/16	.39
CLM-10-SN	M10	13mm	.55	17/64	.51
CLM-12-SN	M12	17mm	.67	3/8	.71