

SWIVEL PAD FEET

STEEL PAD: 1215 STEEL, ZINC PLATED YELLOW CHROMATE OR BLACK OXIDE FINISH
 DELRIN® PAD: WHITE DELRIN 500. STAINLESS PAD: 300-SERIES STAINLESS STEEL
 STEEL NUT: 1215 STEEL, CARBURIZED-HARDENED ZINC PLATED YELLOW CHROMATE OR BLACK OXIDE FINISH
 STAINLESS NUT: 300-SERIES STAINLESS STEEL



**Steel
Zinc Plated**



**Steel
Zinc Plated
with Delrin® Pad**

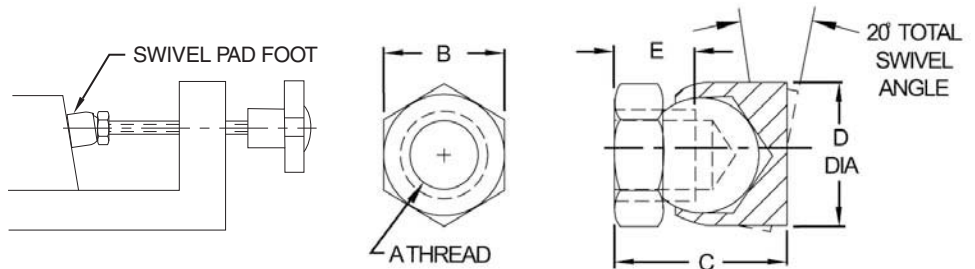


**Steel
Black Oxide Finish**



**Stainless
Steel**

Heavy-duty swivel foot pivots to contact sloped surfaces evenly. Large ball provides high load capacity with a 20° total swivel angle. Available in steel (zinc plated or black oxide finish), steel with a Delrin® pad, and stainless steel.



STEEL — ZINC PLATED (INCH)

PART NO.	A	B	C	D DIA	E
CL-4-SPF	1/4-20	1/2	5/8	5/8	5/16
CL-5-SPF	5/16-18	9/16	3/4	11/16	3/8
CL-6-SPF	3/8-16	5/8	13/16	3/4	
CL-8-SPF	1/2-13	3/4	15/16	7/8	7/16
CL-10-SPF	5/8-11	7/8	1	1	
CL-12-SPF	3/4-10	1-1/8	1-11/32	1-1/4	5/8

STEEL — ZINC PLATED WITH DELRIN® PAD (INCH)

PART NO.	A	B	C	D DIA	E
CL-4-SPFN	1/4-20	1/2	5/8	5/8	5/16
CL-5-SPFN	5/16-18	9/16	3/4	11/16	3/8
CL-6-SPFN	3/8-16	5/8	13/16	3/4	
CL-8-SPFN	1/2-13	3/4	15/16	7/8	7/16
CL-10-SPFN	5/8-11	7/8	1	1	
CL-12-SPFN	3/4-10	1-1/8	1-11/32	1-1/4	5/8

STEEL — BLACK OXIDE FINISH (INCH)

PART NO.	A	B	C	D DIA	E
CL-4-SPF-BO	1/4-20	1/2	5/8	5/8	5/16
CL-5-SPF-BO	5/16-18	9/16	3/4	11/16	3/8
CL-6-SPF-BO	3/8-16	5/8	13/16	3/4	
CL-8-SPF-BO	1/2-13	3/4	15/16	7/8	7/16
CL-10-SPF-BO	5/8-11	7/8	1	1	
CL-12-SPF-BO	3/4-10	1-1/8	1-11/32	1-1/4	5/8

STAINLESS STEEL (INCH)

PART NO.	A	B	C	D DIA	E
CL-4-SPF-S	1/4-20	1/2	5/8	5/8	5/16
CL-5-SPF-S	5/16-18	9/16	3/4	11/16	3/8
CL-6-SPF-S	3/8-16	5/8	13/16	3/4	
CL-8-SPF-S	1/2-13	3/4	15/16	7/8	7/16
CL-10-SPF-S	5/8-11	7/8	1	1	
CL-12-SPF-S	3/4-10	1-1/8	1-11/32	1-1/4	5/8

STEEL — ZINC PLATED (METRIC)

PART NO.	A THREAD	THREAD PITCH (mm)	B (mm)	C (mm)	D DIA (mm)	E (mm)
CLM-6-SPF	M6	1	13	16	16	8
CLM-8-SPF	M8	1.25	15	19	17.5	9.5
CLM-10-SPF	M10	1.5	17	20.5	19	9.5
CLM-12-SPF	M12	1.75	19	24	22	11
CLM-16-SPF	M16	2	24	25.5	25.5	11
CLM-20-SPF	M20	2.5	30	34	32	16

STEEL — ZINC PLATED WITH DELRIN® PAD (METRIC)

PART NO.	A THREAD	THREAD PITCH (mm)	B (mm)	C (mm)	D DIA (mm)	E (mm)
CLM-6-SPFN	M6	1	13	16	16	8
CLM-8-SPFN	M8	1.25	15	19	17.5	9.5
CLM-10-SPFN	M10	1.5	17	20.5	19	9.5
CLM-12-SPFN	M12	1.75	19	24	22	11
CLM-16-SPFN	M16	2	24	25.5	25.5	11
CLM-20-SPFN	M20	2.5	30	34	32	16

STEEL — BLACK OXIDE FINISH (METRIC)

PART NO.	A THREAD	THREAD PITCH (mm)	B (mm)	C (mm)	D DIA (mm)	E (mm)
CLM-6-SPF-BO	M6	1	13	16	16	8
CLM-8-SPF-BO	M8	1.25	15	19	17.5	9.5
CLM-10-SPF-BO	M10	1.5	17	20.5	19	9.5
CLM-12-SPF-BO	M12	1.75	19	24	22	11
CLM-16-SPF-BO	M16	2	24	25.5	25.5	11
CLM-20-SPF-BO	M20	2.5	30	34	32	16

STEEL — ZINC PLATED WITH DELRIN® PAD (METRIC)

PART NO.	A THREAD	THREAD PITCH (mm)	B (mm)	C (mm)	D DIA (mm)	E (mm)
CLM-6-SPF-S	M6	1	13	16	16	8
CLM-8-SPF-S	M8	1.25	15	19	17.5	9.5
CLM-10-SPF-S	M10	1.5	17	20.5	19	9.5
CLM-12-SPF-S	M12	1.75	19	24	22	11
CLM-16-SPF-S	M16	2	24	25.5	25.5	11
CLM-20-SPF-S	M20	2.5	30	34	32	16