

SPRING LOCATING PINS

PIN: DELRIN®

SPRING: SOLID POLYURETHANE. HOUSING: ALUMINIUM



5/8
Dia

1/2
Dia

7/16
Dia

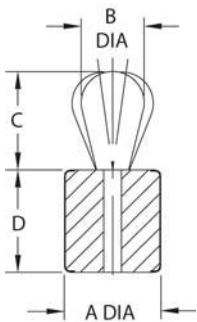
7/16
Dia

1/4
Dia

Delrin® Pin Solid Polyurethane Spring

Delrin® contact pin avoids marring soft or finished surfaces. Solid polyurethane body is covered by an aluminium shell.

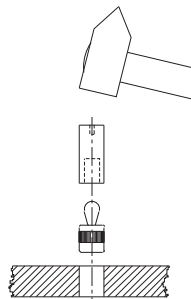
DELRIN® PIN, SOLID POLYURETHANE SPRING



PART NO.	A DIA	APPROX SIDE FORCE (LBS)	B DIA	C	D	X DIMENSION WHEN Y EQUALS							1/2 OR MORE
						1/16	1/8	3/16	1/4	5/16	3/8	7/16	
CL-7-SLPP-1	7/16	6.7	.197	.287	.374	.051	.059	.066	.067	.067	.067	.067	.067
CL-7-SLPP-2		13.5											
CL-7A-SLPP-1	7/16	6.7	.236	.406	.374	.050	.058	.066	.073	.078	.078	.078	.078
CL-7A-SLPP-2		13.5											
CL-8-SLPP-1	1/2	11.1	.315	.515	.553	.073	.081	.089	.096	.104	.110	.110	.110
CL-8-SLPP-2		22.2											
CL-10-SLPP-1	5/8	18	.394	.678	.675	.084	.091	.099	.107	.114	.122	.130	.135
CL-10-SLPP-2		36											



Installation Tools



Handy tool to speed up installation of Spring Locating Pins. Use with any of the three types.

INSTALLATION TOOLS

PART NO.	USE TO INSTALL		
CL-4-SLPT	CL-4-SLP-x	CL-4-SLPS-x	CL-4-SLPP-x
CL-7-SLPT	CL-7-SLP-x	CL-7-SLPS-x	CL-7-SLPP-x
CL-7A-SLPT	CL-7A-SLP-x	CL-7A-SLPS-x	CL-7A-SLPP-x
CL-8-SLPT	CL-8-SLP-x	CL-8-SLPS-x	CL-8-SLPP-x
CL-10-SLPT	CL-10-SLP-x	CL-10-SLPS-x	CL-10-SLPP-x