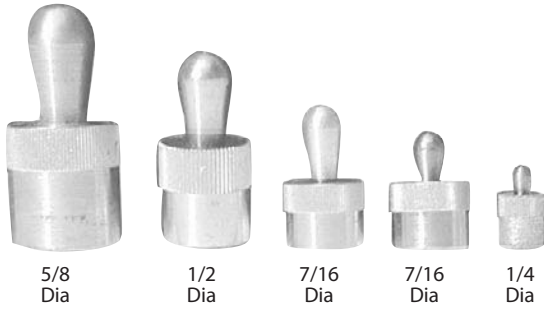


SPRING LOCATING PINS

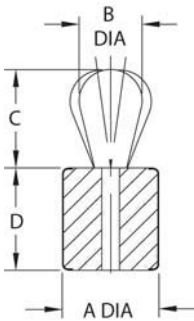
PIN: 300-SERIES STAINLESS STEEL
 SPRING: SOLID POLYURETHANE. HOUSING: ALUMINUM



Stainless Steel Pin Solid Polyurethane Spring

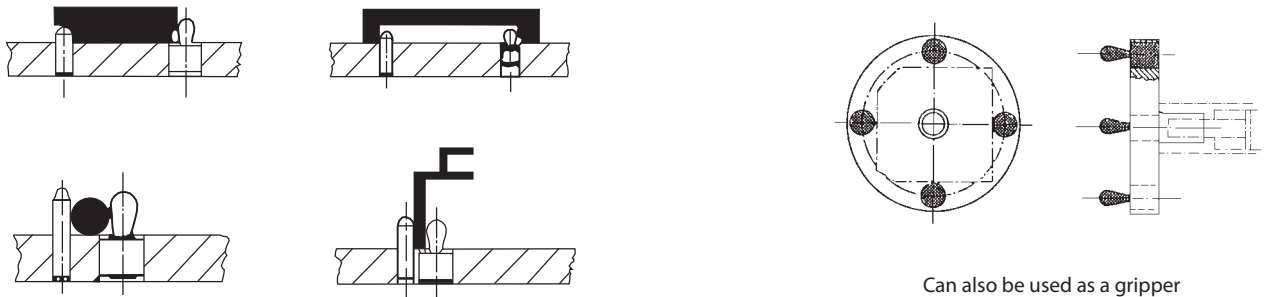
Stainless steel contact pin is ideal for corrosive environments and hygienic applications. Solid polyurethane body is covered by an aluminum shell.

STAINLESS STEEL PIN, SOLID POLYURETHANE SPRING



PART NO.	A DIA	APPROX SIDE FORCE (LBS)	SPRING COLOR	B DIA	C	D	X DIMENSION WHEN Y EQUALS							
							1/16	1/8	3/16	1/4	5/16	3/8	7/16	1/2 OR MORE
CL-7-SLPS-1	7/16	6.7	BLUE	.197	.287	.374	.051	.059	.066	.067	.067	.067	.067	0.067
CL-7-SLPS-2		13.5	RED											
CL-7-SLPS-3		20	GREEN											
CL-7A-SLPS-1	7/16	4.4	BLUE	.236	.406	.374	.050	.058	.066	.073	.078	.078	.078	.078
CL-7A-SLPS-2		6.7	RED											
CL-7A-SLPS-3		13.5	GREEN											
CL-8-SLPS-1	1/2	11.1	RED	.315	.515	.553	.073	.081	.089	.096	.104	.110	.110	.110
CL-8-SLPS-2	22.2	GREEN												
CL-10-SLPS-1	5/8	18	RED	.394	.678	.675	.084	.091	.099	.107	.114	.122	.130	.135
CL-10-SLPS-2		36	GREEN											

APPLICATION EXAMPLES



Can also be used as a gripper for light clamping.