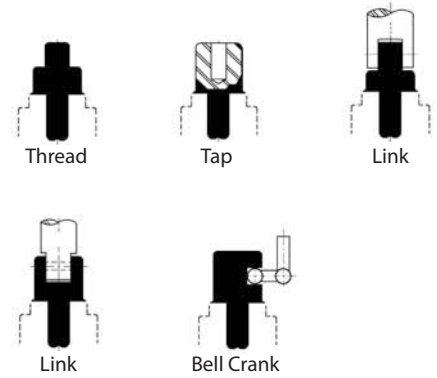


TAPERED INDEX PLUNGERS

PLUNGER, BODY, CAM, AND BUSHING: 1144 STEEL, HEAT TREATED. CENTER SHAFT: 1144 STEEL. SPRING: MUSIC WIRE.

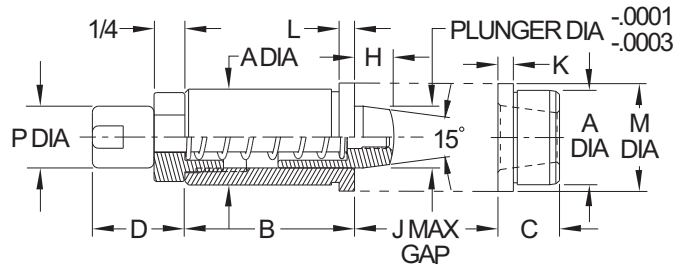


**Tapered Index Plunger
Blank Machinable End**



Index Plungers are precision, heavy-duty assemblies with a retractable spring-loaded plunger and a matching locating bushing. Tapered Index Plungers feature a 15° taper on the plunger tip with a mating taper in the bushing. The taper makes alignment easier and also eliminates any binding during retraction. Straight Index Plungers have an entirely cylindrical plunger with a slight radius at the tip, used together with a straight bushing. A straight plunger provides slightly greater positional accuracy. Order plunger and bushing separately.

The version shown on this page has a blank machinable end for easy adaptation to various actuating devices, including automated setups. Precision ground body (also available with a slightly oversize unground body to allow custom grinding to size). Index Plungers are manufactured with precision working tolerances and are designed for a very light interference-fit installations to avoid binding of the mechanism.



TAPERED INDEX PLUNGERS — BLANK MACHINABLE END (INCH)

| PART NO. INDEX PLUNGER | PART NO. BUSHING | PLUNGER DIA | A DIA | | | B | C | D | H | J | K | L | M DIA | P DIA |
|------------------------------|---------------------|----------------|----------|---------------|--------------|-------|-----|-------|------|------|-----|-----|----------|----------|
| | | | NOMINAL | GROUND | UNGROUND | | | | | | | | | |
| CL-22014-TIP | CL-22032-TIPB | 1/2 | 3/4 | .7518/.7515 | — | 1-3/8 | 1/2 | 3/4 | 5/16 | 3/32 | 1/8 | 1/8 | 7/8 | 1/2 |
| CL-22012-TIP | CL-22030-TIPB | | | — | .766/.765 | | | | | | | | | |
| CL-22114-TIP | CL-22132-TIPB | 3/4 | 1-1/8 | 1.1268/1.1265 | — | 2 | 5/8 | 1 | 3/8 | 1/8 | 1/8 | 1/8 | 1-1/4 | 3/4 |
| CL-22112-TIP | CL-22130-TIPB | | | — | 1.141/1.140 | | | | | | | | | |
| CL-22214-TIP | CL-22232-TIPB | 1 | 1-1/2 | 1.5021/1.5018 | — | 2-1/4 | 3/4 | 1-1/4 | 3/8 | 1/8 | 1/8 | 1/8 | 1-5/8 | 15/16 |
| CL-22212-TIP | CL-22230-TIPB | | | — | 1.516/1.5018 | | | | | | | | | |