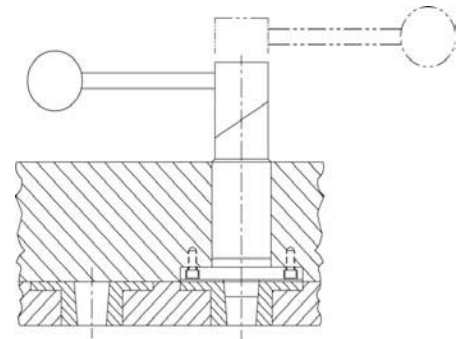


TAPERED INDEX PLUNGERS

PLUNGER, BODY, RETAINER, AND CAM: 1144 STEEL, HEAT TREATED. CENTER SHAFT: 1144 STEEL. SPRING: MUSIC WIRE.
BALL KNOB: BLACK PHENOLIC PLASTIC WITH MOLDED-IN BRASS INSERT

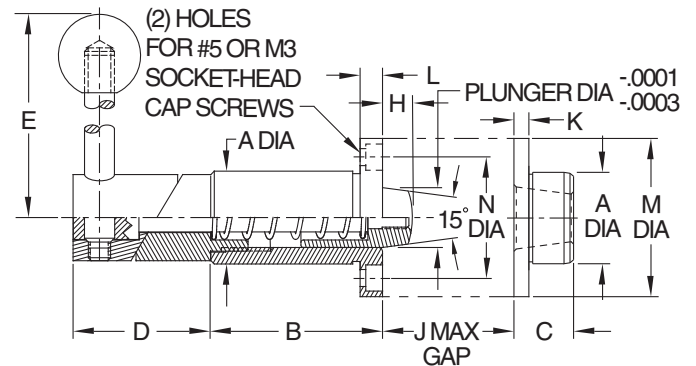


**Tapered Index Plungers
Rotary Cam
Flange Mount**



Index Plungers are precision, heavy-duty assemblies with a retractable spring-loaded plunger and a matching locating bushing. Tapered Index Plungers feature a 15° taper on the plunger tip with a mating taper on the bushing. The taper makes alignment easier and also eliminates any binding during retraction. Straight Index Plungers have an entirely cylindrical plunger with a slight radius at the tip, used together with a straight bushing. A straight plunger provides slightly greater positional accuracy. Order plunger and bushing separately.

The rotary-cam version completely retracts when the handle is rotated 180°. Cam surfaces are hardened steel. The flange-mount configuration shown here has a precision ground body with a flange used for orientation by fastening with two Socket-Head Cap Screws (also available with a slightly oversized unground body to allow custom grinding to size). Flange mounting is designed for installations where a cross hole for a set screw is not practical. Index plungers are manufactured with precision working tolerances and are designed for a very light interference-fit installations to avoid binding of the mechanism.



TAPERED INDEX PLUNGERS — ROTARY CAM, FLANGE MOUNT (INCH)

PART NO. INDEX PLUNGER	PLUNGER DIA	A DIA			B	D	E	H	J	L	M DIA	N DIA
		NOMINAL	GROUND	UNGROUND								
CL-22019-TIP	1/2	3/4	.7518/.7515	—	1-3/8	1-1/8	3	5/16	3/32	3/16	-	1
CL-22017-TIP			—	.766/.765								
CL-22119-TIP	3/4	1-1/8	1.1268/1.1265	—	2	1-1/2	3-1/2	13/32	1/8	3/16	-	1-3/8
CL-22117-TIP			—	1.141/1.140								

TAPERED INDEX PLUNGERS — ROTARY CAM, FLANGE MOUNT (METRIC)

PART NO. INDEX PLUNGER	PLUNGER DIA	A DIA			B	D	E	H	J	L	M DIA	N DIA
		NOMINAL	GROUND	UNGROUND								
CLM-22019-TIP	12mm	20mm	.7892/.7889	----	35mm	28-1/2	76mm	8	2.4	5mm	34mm	25mm
CLM-22119-TIP	20mm	30mm	1.1829/1.1826	----	51mm	45-1/2	89mm	10.5	3.2	5mm	42mm	35mm