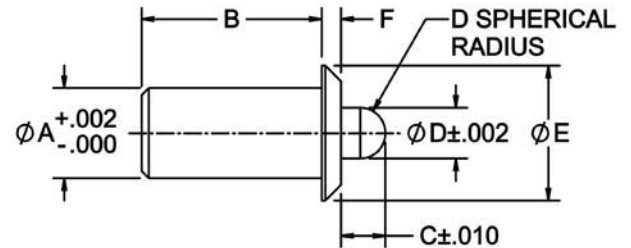


# PRESS-FIT SPRING PLUNGERS

STEEL – BODY: 1215 STEEL, BLACK OXIDE FINISH. PLUNGER NOSE: 1215 STEEL, CASE HARDENED, BLACK OXIDE FINISH OR ZINC PLATED CLEAR CHROMATE (OR DELRIN®). SPRING: MUSIC WIRE.  
 STAINLESS STEEL – BODY: 300-SERIES STAINLESS. PLUNGER NOSE: 300-SERIES STAINLESS (OR DELRIN®). SPRING: 302 STAINLESS



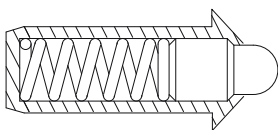
Simple, economical spring-loaded plunger ideal for installation in softer materials, such as aluminum, wood or plastic. Sturdy shoulder provides a fixed seating position and positively resists detent force (installation hole can be counterbored to recess the shoulder). Use when a threaded hole would be impractical and/or adjustment is not required. Choice of six sizes, each in light or heavy force. Available in steel, with a hardened plunger nose, or stainless steel. Optionally available with a Delrin® nose to prevent marring.

## STANDARD PLUNGER NOSE, LIGHT FORCE

PART NO.	A DIA	INITIAL END FORCE (lbs)	FINAL END FORCE (lbs)	B	C	D	E DIA	F
CL-2-PSP-1	0.125	0.5	1	0.252	0.062	0.070	0.187	0.032
CL-3-PSP-1	0.188	0.8	2.5	0.441	0.094	0.121	0.250	0.044
CL-4-PSP-1	0.250	1.5	3	0.481	0.125	0.168	0.312	0.044
CL-5-PSP-1	0.312	2	5	0.643	0.151	0.186	0.375	0.045
CL-6-PSP-1	0.375	2.5	7	0.785	0.187	0.234	0.500	0.078
CL-8-PSP-1	0.500	4	9	1.13	0.250	0.332	0.688	0.088

## STANDARD PLUNGER NOSE, HEAVY FORCE

CL-2-PSP-2	0.125	1	2	0.252	0.062	0.070	0.187	0.032
CL-3-PSP-2	0.188	1.5	4.5	0.441	0.094	0.121	0.250	0.044
CL-4-PSP-2	0.250	2.5	6	0.481	0.125	0.168	0.312	0.044
CL-5-PSP-2	0.312	4	10	0.643	0.151	0.186	0.375	0.045
CL-6-PSP-2	0.375	5	14	0.785	0.187	0.234	0.500	0.078
CL-8-PSP-2	0.500	8	18	1.130	0.250	0.332	0.688	0.088



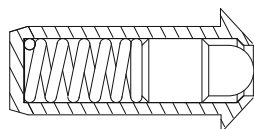
Nose Extended

## DELRIN® PLUNGER NOSE, LIGHT FORCE

CL-2-PSPN-1	0.125	0.5	1	0.252	0.062	0.070	0.187	0.032
CL-3-PSPN-1	0.188	0.8	2.5	0.441	0.094	0.121	0.250	0.044
CL-4-PSPN-1	0.250	1.5	3	0.481	0.125	0.168	0.312	0.044
CL-5-PSPN-1	0.312	2	5	0.643	0.151	0.186	0.375	0.045
CL-6-PSPN-1	0.375	2.5	7	0.785	0.187	0.234	0.500	0.078
CL-8-PSPN-1	0.500	4	9	1.130	0.250	0.332	0.688	0.088

## DELRIN® PLUNGER NOSE, HEAVY FORCE

CL-2-PSPN-2	0.125	1	2	0.252	0.062	0.070	0.187	0.032
CL-3-PSPN-2	0.188	1.5	4.5	0.441	0.094	0.121	0.250	0.044
CL-4-PSPN-2	0.250	2.5	6	0.481	0.125	0.168	0.312	0.044
CL-5-PSPN-2	0.312	4	10	0.643	0.151	0.186	0.375	0.045
CL-6-PSPN-2	0.375	5	14	0.785	0.187	0.234	0.500	0.078
CL-8-PSPN-2	0.500	8	18	1.130	0.250	0.332	0.688	0.088



Nose Retracted