

# TAPERED HANDLES

BLACK PHENOLIC PLASTIC WITH BRASS INSERT



1/2-13 CL-3-PH  
M10 CLM-10-PH



3/8-16 CL-2-PH  
M8 CLM-8-PH



1/4-20 CL-1-PH  
5/16-18 CL-15-PH  
3/8-16 CL-16-PH  
M6 CLM-6-PH  
M8 CLM-18-PH



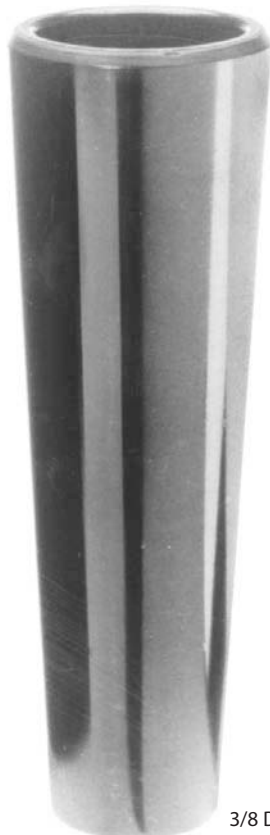
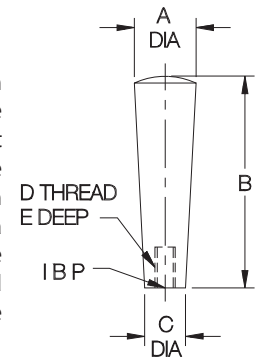
1/4-20 CL-0-PH  
5/16-18 CL-05-PH  
M6 CLM-06-PH  
M8 CLM-08-PH



#10-32 CL-00-PH  
M5 CLM-005-PH

Phenolic — Tapped

Heavy-duty design that makes an excellent grasp handle or machine shift lever. Molded-in brass insert provides superior thread strength. The solid-plastic through-hole version can be used with a Shoulder Screw as a revolving crank handle. Choice of five handle sizes. Non-standard thread sizes or molded-in studs are available in quantities of 500 and above.



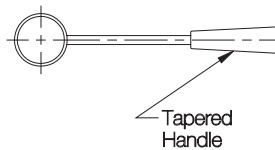
3/8 Dia CL-30-PH



3/8 Dia CL-20-PH



1/4 Dia CL-10-PH

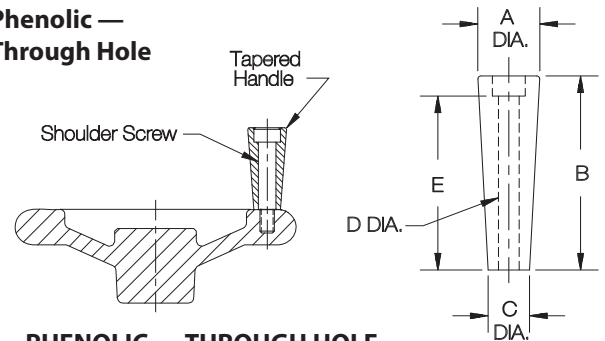


Tapered Handle

## PHENOLIC — TAPPED (INCH & METRIC)

PART NO.	A DIA	B	C DIA	D	E
CL-00-PH	3/4	7/8	3/8	#10-32	5/16
CLM-005-PH				M5	
CL-0-PH	1	1-1/4	1/2	1/4-20	7/16
CL-05-PH				5/16-18	
CLM-06-PH				M6	3/8
CLM-08-PH				M8	
CL-1-PH	1	2-5/8	5/8	1/4-20	7/16
CL-15-PH				5/16-18	
CL-16-PH				M6	1/2
CLM-18-PH				M8	
CL-2-PH	1-1/8	3-7/8	3/4	3/8-16	5/8
CLM-8-PH				M8	7/16
CL-3-PH	1-3/8	4-1/2	1	1/2-13	2
CLM-10-PH				M10	

Phenolic — Through Hole



## PHENOLIC — THROUGH HOLE

PART NO.	A DIA	B	C DIA	D		E
				NOMINAL	ACTUAL	
CL-10-PH*	1	2-9/16	5/8	1/4	.251/.256	5/8
CL-20-PH*	1-1/8	3-11/16	3/4	3/8	.380/.385	2-5/8
CL-30-PH*	1-3/8	4-3/32	1	3/8	.380/.390	2-5/8

\* This size is solid plastic, without a brass insert.