

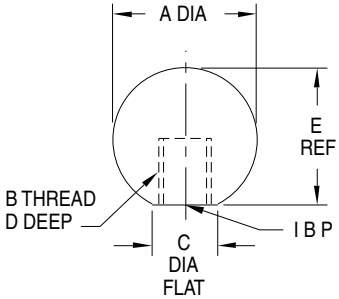
BALL KNOBS

1018 STEEL, BLACK OXIDE FINISH, OR 316 STAINLESS STEEL

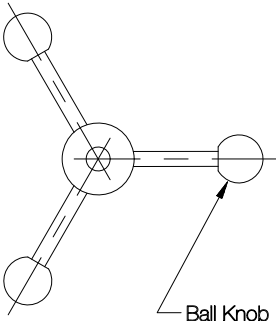


Steel — Tapped

- 1/4-20 CL-632-SBK
- 5/16-18 CL-642-SBK
- 3/8-16 CL-652-SBK
- 1/2-13 CL-672-SBK
- M6 CLM-632-SBK
- M8 CLM-642-SBK
- M10 CLM-652-SBK
- M12 CLM-672-SBK



Heavy-duty knob handle made of steel with a black oxide finish. This durable, multi-purpose knob is suitable for many applications. Ideal when added weight is desirable for easier lever actuation.



Ball Knob

STEEL — TAPPED (INCH)

PART NO.	A DIA	B	C DIA	D	E
CL-632-SBK	1-1/2	1/4-20	5/8	9/16	1-7/16
CL-642-SBK		5/16-18		5/8	
CL-652-SBK		3/8-16			
CL-672-SBK		1/2-13			

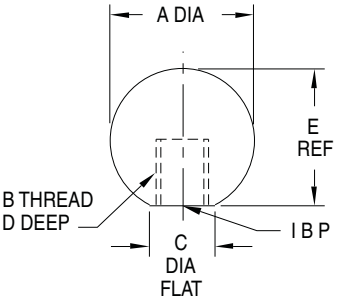
STEEL — TAPPED (METRIC)

PART NO.	A DIA	B	C DIA	D	E
CLM-672-SBK	1-1/2	M12	5/8	5/8	1-7/16



Stainless Steel — Tapped

- 1/4-20 CL-632-SBK-S
- 5/16-18 CL-642-SBK-S
- 3/8-16 CL-652-SBK-S
- 1/2-13 CL-672-SBK-S
- M6 CLM-632-SBK-S
- M8 CLM-642-SBK-S
- M10 CLM-652-SBK-S
- M12 CLM-672-SBK-S



Heavy-duty knob handle made of type 316 stainless steel for excellent corrosion resistance. This durable, multi-purpose knob is suitable for many applications, including marine and chemical environments. Ideal when added weight is desirable for easier lever actuation. Attractive polished finish.

STAINLESS STEEL — TAPPED (INCH)

PART NO.	A DIA	B	C DIA	D	E
CL-632-SBK-S	1-1/2	1/4-20	5/8	9/16	1-7/16
CL-642-SBK-S		5/16-18		5/8	
CL-652-SBK-S		3/8-16			
CL-672-SBK-S		1/2-13			