

BALL KNOBS

BLACK PHENOLIC, THERMOPLASTIC, OR CUSHION GRIP PLASTIC WITH BRASS INSERT

Phenolic — Tapped



3/8-16 CL-852-PB
3/8-24 CL-854-PB
1/2-13 CL-872-PB
5/8-18 CL-882-PB
M10 CLM-852-PB
M12 CLM-872-PB
M16 CLM-882-PB



3/8-16 CL-752-PB
1/2-13 CL-772-PB
M10 CLM-752-PB
M12 CLM-772-PB



1/4-20 CL-632-PB
5/16-18 CL-642-PB
3/8-16 CL-652-PB
3/8-24 CL-654-PB
1/2-13 CL-672-PB
1/2-20 CL-674-PB
M10 CLM-652-PB
M12 CLM-672-PB



1/4-20 CL-532-PB
5/16-18 CL-542-PB
3/8-16 CL-552-PB
3/8-24 CL-554-PB
M8 CLM-542-PB
M10 CLM-552-PB



#10-32 CL-424-PB
1/4-20 CL-432-PB
1/4-28 CL-234-PB
5/16-18 CL-442-PB
5/16-24 CL-444-PB
3/8-16 CL-452-PB
M6 CLM-432-PB
M8 CLM-442-PB



#8-32 CL-212-PB
#10-32 CL-224-PB
1/4-20 CL-232-PB
M5 CLM-222-PB
M6 CLM-232-PB

Phenolic — Tapped Recessed Top



3/8-16 CL-856-PB
3/8-24 CL-858-PB
1/2-13 CL-876-PB

Durable multi-purpose knob, suitable for many applications. Molded-in brass insert provides superior thread strength. Choice of seven ball sizes. The largest size is available with a recessed top (1-1/4" dia) for adding custom decals or inlays. Non-standard thread sizes, molded-in studs, or special colors (thermoplastic and cushion grip only) are available in quantities of 500 and above.

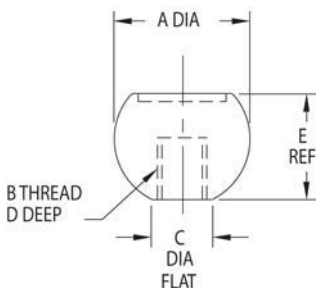
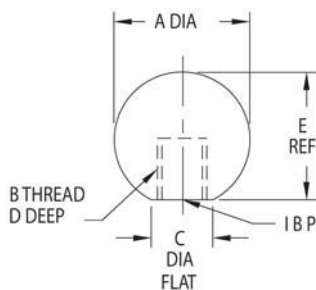
Choose From Three Materials

1. Phenolic plastic — glossy smooth finish, extremely hard, electrical insulator, operating temperatures to 300°F, resistant to oils and most common chemicals.
2. Thermoplastic — textured surface for improved gripping, excellent impact resistance, operating temperatures to 150°F.
3. Cushion Grip — unique plastic that feels soft to the touch, matte finish, comfortable yet rugged, excellent impact resistance, operating temperatures to 150°F, excellent gripability even when wet or oily, absorbs vibration.

PHENOLIC — TAPPED (INCH & METRIC)

PART NO.	A DIA	B	C DIA	D	E				
CL-212-PB	3/4	#8-32	3/8	3/8	45/64				
CL-224-PB		#10-32							
CL-232-PB		1/4-20							
CLM-222-PB		M5							
CLM-232-PB		M6		5/16					
CL-424-PB	1	#10-32	1/2	7/16	31/32				
CL-432-PB		1/4-20							
CL-234-PB		1/4-28							
CL-442-PB		5/16-18							
CL-444-PB		5/16-24							
CL-452-PB		3/8-16							
CLM-432-PB		M6							
CLM-442-PB		M8							
CL-532-PB		1-3/16				1/4-20	9/16	1/2	1-1/8
CL-552-PB		1-3/4				3/8-16			
CLM-542-PB	1-3/16	M8	5/8	1/2	1-19/64				
CL-632-PB	1-3/8	1/4-20							
CL-642-PB		5/16-18							
CL-652-PB		3/8-16							
CL-654-PB		3/8-24							
CL-672-PB		1/2-13							
CL-674-PB		1/2-20							
CLM-652-PB		M10							
CLM-672-PB		M12							
CL-752-PB		1-5/8				3/8-16	11/16	5/8	1-37/64
CL-772-PB			1/2-13						
CLM-772-PB	M12								
CL-852-PB	1-7/8	3/8-16	3/4	5/8	1-51/64				
CL-854-PB		3/8-24							
CL-872-PB		1/2-13							
CL-882-PB*		5/8-18							
CLM-852-PB		M10							

* This size is solid plastic, without a brass insert.



PHENOLIC — TAPPED RECESSED TOP (INCH)

PART NO.	A DIA	B	C DIA	D	E
CL-856-PB	1-7/8	3/8-16	3/4	1/2	1-15/32
CL-858-PB		3/8-24			
CL-876-PB		1/2-13			